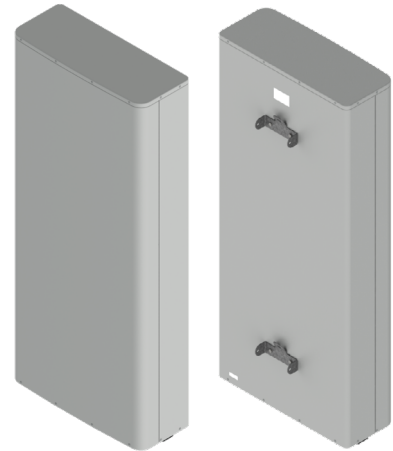


GP7640-08324

Description:

- 4x4 MIMO 2/4/4 beam panel antenna for high-capacity applications
- 2-beam (8-port) covering 617-896 MHz, 4-beam (16-port) covering 1695-2690 MHz and 4-beam (16-port) covering 3300-4000 MHz
- Remote Electrical Tilt (RET) with independent control for each beam
- Patented technology allows for stable azimuth beam directions over the entire operating frequency band



Electrical Specifications

Frequency Band [MHz]	617-698	698-806	806-896	1695-1910	1930-2020	2110-2200	2305-2360	2496-2690	3300-3550	3550-3700	3700-4000
Input Connector Type	8x 4.3-10(F)			16x 4.3-10(F)				16x 4.3-10(F)			
Gain, max. (dBi)	12.4	13.4	13.7	18.6	19.0	19.4	19.5	19.0	20.1	20.1	20.3
Gain, avg. (dBi)	11.4	12.6	12.8	16.7	17.7	18.2	17.6	17.4	19.1	19.1	18.9
Azimuth Beamwidth (°)	36	33	29	19	19	17	16	15	18	18	17
Azimuth Beam Spacing (°)	50			26				26			
Azimuth Beam Crossover (dB)	8	10	12	7	8	10	12	14	8	8	9
Elevation Beamwidth (°)	39	33	28	15	13	12	12	11	14	13	13
Electrical Downtilt Range (°)	2-14			0-10				0-10			
Front-to-Back Ratio, 180° (dB)	35			39				40			
Cross-Pol Discrimination@Boresight (dB)	17	18	16	22				25			
VSWR /RL (dB)	1.5:1 / 14.0										
Port-to-Port Isolation, Intrabeam (dB)*	25										
Port-to-Port Isolation, Interbeam (dB)**	14										
PIM @ 2x43 dBm (dBc)	-153						-145				
Max Power per Port (Watt)	200						150				
Polarization (°)	Dual slant 45 (±45)										
Impedance (Ω)	50										

* Port-port isolation between each cluster of four ports in the same 4x4 MIMO beam

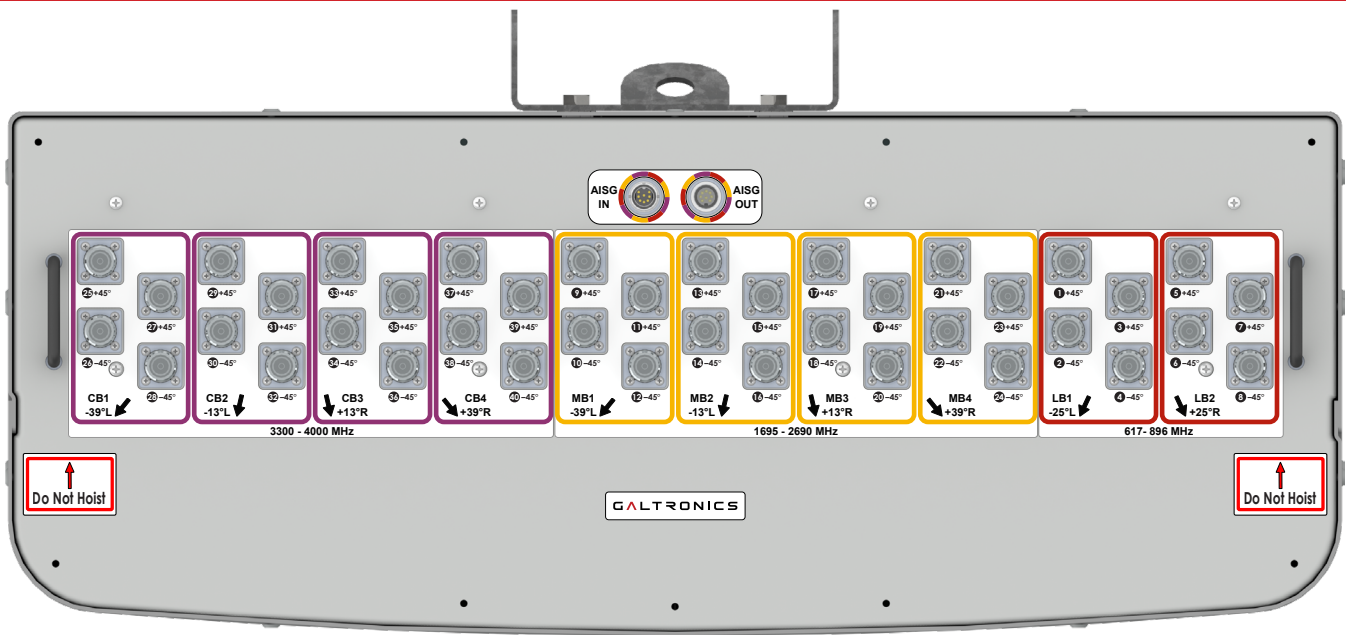
** Port-port isolation between any combination of ports between different beams

RFD#: 8324; Revision: R1; Release Date: June 29, 2026;

Electrical Specifications - BASTA

Frequency Band [MHz]	617-698	698-806	806-896	1695-1910	1930-2020	2110-2200	2305-2360	2496-2690	3300-3550	3550-3700	3700-4000
Gain Over All Tilts, avg. (dBi)	11.4	12.6	12.8	16.7	17.8	18.3	17.7	17.4	18.9	19.1	19.2
Gain Over All Tilts Tolerance (dB)	0.7	0.5	1.0	1.4	1.1	0.9	1.8	1.3	0.7	0.7	0.9
AZ Beamwidth Tolerance (°)	2.3	2.6	1.8	2.5	3.8	2.8	2.8	2.8	4.2	3.5	3.0
EL Beamwidth Tolerance (°)	3.7	3.3	3.4	1.3	0.6	0.5	1.2	1.1	0.7	0.7	0.7
Upper Sidelobe Suppression, Peak to +20° (dB)	N/A			14.2	14.5	14.3	12.8	13.9	18.8	20.8	20.9
Front-to-Back Ratio, Total Power, +/-30° (dB)	24	25	24	27	28	26	25	22	31	30	29
Cross-Polar Discrimination at Boresight (dB)	15	16	13	16	20	21	15	20	18	22	21
Azimuth Beam Peak Tolerance (°)	1.7	1.6	1.9	0.9	0.5	0.5	0.7	0.9	0.5	0.6	0.7
Azimuth Beam Crossover Tolerance (dB)	1.2	1.4	1.5	0.9	0.6	0.8	1.8	3.3	1.4	1.3	1.2

Bottom Plate & Port Designation Details



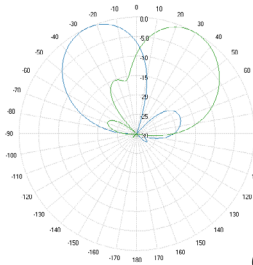
Port/Beam Designator Table

Frequency Range	Ports	Beam Assignment	AZ Beam Direction	Downtilt
617-896 MHz	1 - 4	LB1	-25° L	2-14°
617-896 MHz	5 - 8	LB2	+25° R	2-14°
1695-2690 MHz	9 - 12	MB1	-39° L	0-10°
1695-2690 MHz	13 - 16	MB2	-13° L	0-10°
1695-2690 MHz	17 - 20	MB3	+13° R	0-10°
1695-2690 MHz	21 - 24	MB4	+39° R	0-10°
3300-4000 MHz	25 - 28	CB1	-39° L	0-10°
3300-4000 MHz	29 - 32	CB2	-13° L	0-10°
3300-4000 MHz	33 - 36	CB3	+13° R	0-10°
3300-4000 MHz	37 - 40	CB4	+39° R	0-10°

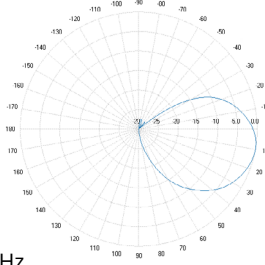
Copyright © 2026 – Galtronics Corporation Ltd.

Proprietary Information. All rights reserved. Galtronics reserves the right to modify or amend any antenna or specification without prior notice.

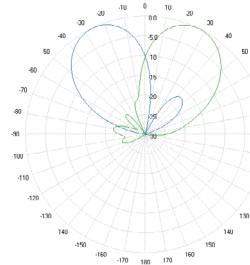
2D Antenna Patterns



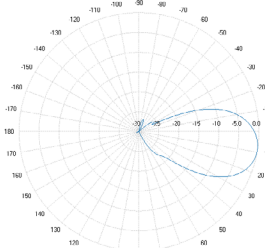
630 MHz



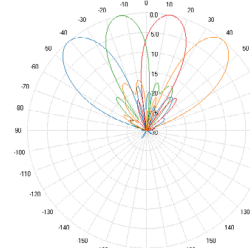
788 MHz



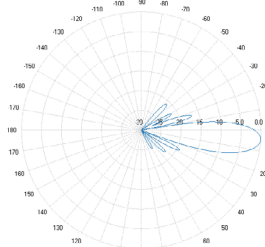
840 MHz



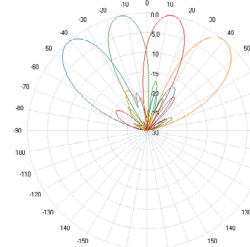
1820 MHz



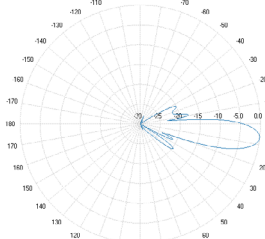
1980 MHz



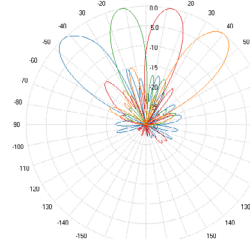
2130 MHz



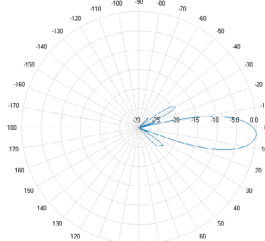
2345 MHz



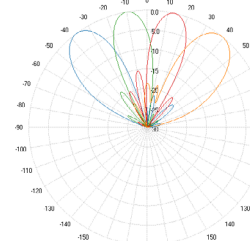
2550 MHz



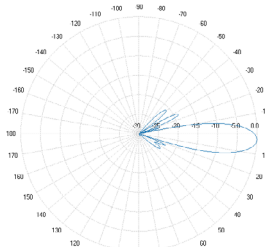
3400 MHz



3600 MHz



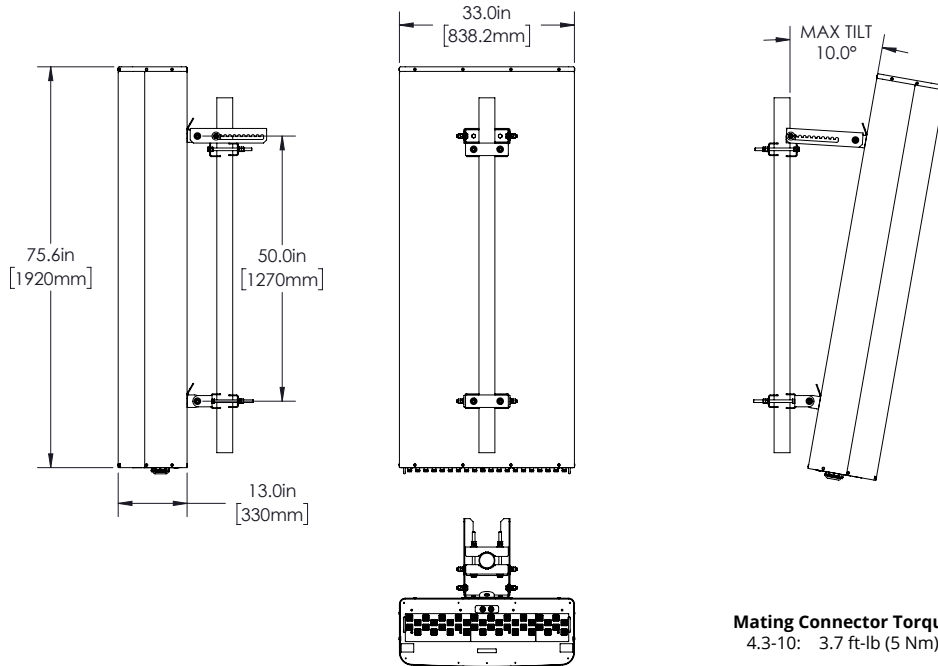
3880 MHz



Copyright © 2026 – Galtronics Corporation Ltd.

Proprietary Information. All rights reserved. Galtronics reserves the right to modify or amend any antenna or specification without prior notice.

Antenna Outline



Mating Connector Torque:
4.3-10: 3.7 ft-lb (5 Nm)

Mechanical Specifications

Operating Temperature	-40° to 158°F (-40° to +70°C)
Antenna Weight	173.1 lbs (78.5 kg)
Antenna Bracket Weight (MK-07286)	14.0 lbs (6.36 kg)
Antenna Dimension (Height x Width x Depth)	75.6" (1920 mm) x 33.0" (838.2 mm) x 13.0" (330 mm)
Input Connector Type	40x 4.3-10(F)
RET Specification	Internal, AISG 2.0
Radome Material	ASA
Radome Color	Gray
Environmental Rating	Outdoor

Part Numbers & Ordering Options

Description	Color	Mounting Kit	Part Number
Tri-band 120° Sector Multibeam 4x4 MIMO Antenna with 40x 4.3-10(F) Connectors	Gray	Includes MK-07286 Mounting Bracket Assembly	GP7640-08324-112

Mounting Brackets & Optional Accessories

Description	Part Number
<p>Heavy Duty Mounting Bracket (wind speed of 150 mph) [Included]</p> <p>This steel mounting bracket is suitable for all Galtronics outdoor Base Station Panel antennas with height 6' and above, and can be assembled onto poles diameter ranging from 2.375" to 4.5".</p> <p>Note: The MK-07286 mounting bracket can also be ordered separately.</p>	<p>MK-07286</p>

RFD#: 8324; Revision: R1; Release Date: June 29, 2026;