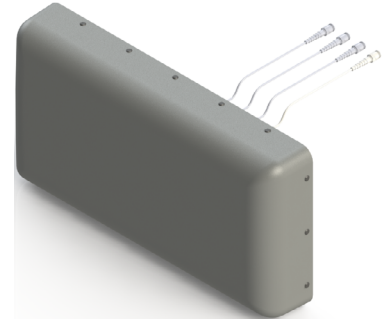


**Wall/Pole Mount 4x4 MIMO Panel Antenna [617-960MHz, 1695-2690MHz and 3300-4200MHz]**

# GP2708-07124



617-960MHz, 1695-2690MHz and 3300-4200MHz  
4x4 MIMO Directional Panel Antenna

**Description:**

- Directional MIMO antenna for indoor/outdoor DAS & high capacity venues
- 4x4 MIMO capability to maximize data throughput
- +/-45° cross polarized array design for optimal DAS and Mobile environment MIMO path discrimination

**Electrical Specifications**

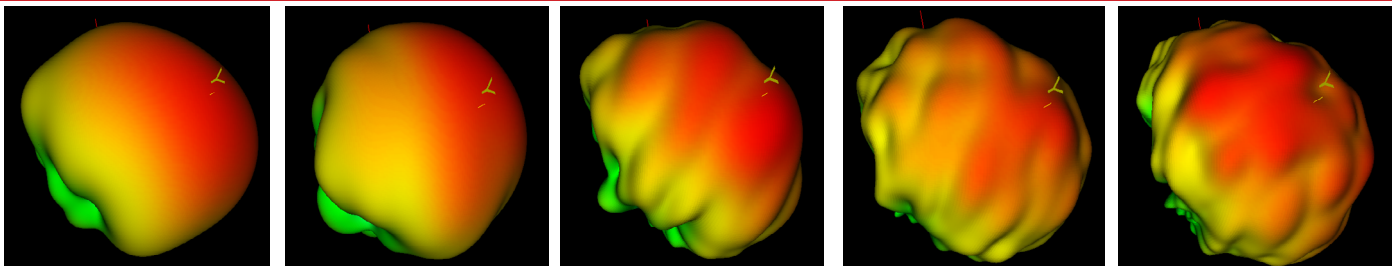
Frequency Band [MHz]	617-698	698-806	806-960	1695-2200	2300-2690	3300-4200
<b>Input Connector Type</b>	4x 4.3-10 (F) w/ Pigtailed (17"/43.2cm)					4x 4.3-10 (F) w/ Pigtailed (17"/43.2cm)
<b>VSWR (Max.) /RL (Min.)</b>	1.7:1/12 dB					
<b>Impedance</b>	50 Ω					
<b>Polarization</b>	Dual Slant 45° (±45°)					
<b>Isolation (Min.)</b>	17 dB			20 dB		
<b>Horizontal Beamwidth</b>	76°	71°	72°	53°	60°	47°
<b>Vertical Beamwidth</b>	67°	66°	69°	58°	67°	58°
<b>Gain (Max.)</b>	7.8 dBi	7.9 dBi	9.0 dBi	8.5 dBi	7.6 dBi	8.8 dBi
<b>Gain (Avg.)</b>	7.0 dBi	7.1 dBi	7.0 dBi	7.5 dBi	6.6 dBi	7.3 dBi
<b>Downtilt</b>	0° Fixed					
<b>Front-to-Back Ratio, 180°</b>	27 dB	24 dB	29 dB	32 dB	34 dB	31 dB
<b>Max Power / Port</b>	100W					50W
<b>PIM @ 2x43 dBm</b>	N/A	<-153 dBc				<-145 dBc

**Mechanical Specifications**

<b>Operating Temperature</b>	-40° to 158°F (-40° to +70°C)
<b>Antenna Weight</b>	13.6 lbs (6.17 kg)
<b>Antenna Dimension (HxWxD)</b>	13.9" (353.4 mm) x 26.98" (685.4 mm) x 5" (127.3 mm)
<b>Radome Material</b>	ASA
<b>Wind Survival Rating</b>	150 mph (241 km/h)
<b>Radome Color</b>	Gray*
<b>Ingress Protection</b>	Indoor/Outdoor (IP65)

\* Radome can be painted with recommended paint "Krylon fusion for plastic"

**Antenna Patterns**



**698 MHz**

**847 MHz**

**1900 MHz**

**2442 MHz**

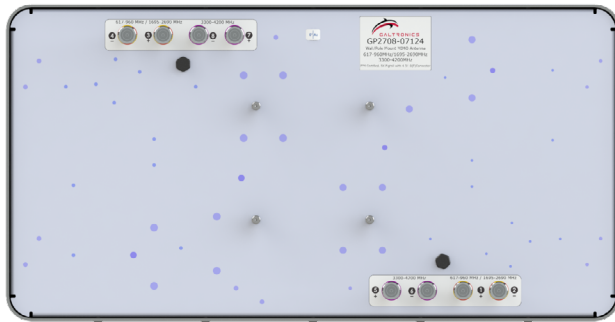
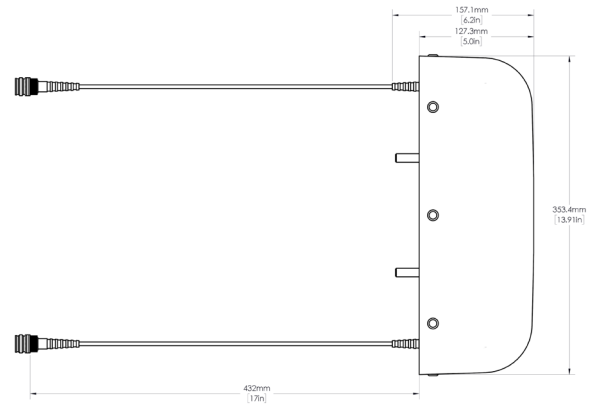
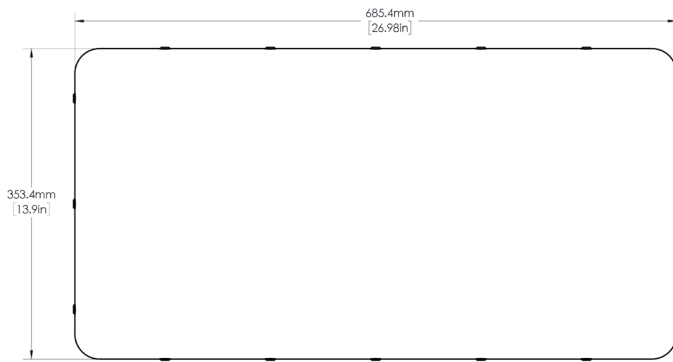
**3550 MHz**

\* 3D patterns showing antenna radiation direction facing right.

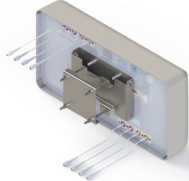
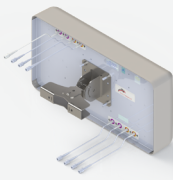
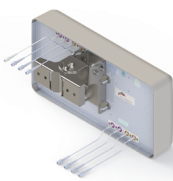
Copyright © 2021 – Galtronics Corporation Ltd.

Proprietary Information. All rights reserved. Galtronics reserves the right to modify or amend any antenna or specification without prior notice.

## Antenna Outline and Back View with Port Labelling



## Part Numbers, Ordering Options and Accessories

Description:	Part Number:
<b>Antenna with 8x 4.3-10 (F) Connectors (Including MK-07305 Wall/Pole Mounting Bracket)</b>	GP2708-07124-112
Mounting Bracket(s):	Part Number:
<p><b>Heavy Duty Mounting Bracket (wind speed of 150 mph) [Included]</b></p> <p>This standard mounting bracket offers an easy installation solution to mount the antenna to either a horizontal or a vertical pole.</p>	 <p>MK-07305</p>
<p><b>1 or 2 Axis Pole/Wall Mounting Bracket (wind speed up to 170 mph) [Optional]</b></p> <p>The mounting bracket allows wall and pole mounting with flexible and continuous antenna adjustment in the horizontal and vertical plane.</p>	 <p>62-45-09</p>
<p><b>2 Axis Pole/Wall Mounting Bracket (150 mph) [Optional]</b></p> <p>Galtronics' mounting bracket offers an easy installation solution to mount Galtronics' stadium antennas to either a pole or a wall. When attaching the antenna to a wall please make sure to select appropriate fasteners (not included).</p>	 <p>62-28-09</p>

### Mating Connector Torque:

4.3-10: 3.7 ft-lb ( 5 Nm)

Copyright © 2021 – Galtronics Corporation Ltd.

Proprietary Information. All rights reserved. Galtronics reserves the right to modify or amend any antenna or specification without prior notice.