

Small Form Factor Wideband SISO Antenna [617-960, 1695-2690 and 3300-4200 MHz]

PEAR™ GI0801-T6971



617-960, 1695-2690 and 3300-4200
SISO Omni Antenna

Description:

- Omni directional antenna for in-building coverage applications such as DAS
- Wide band SISO antenna for 5G coverage in 600MHz and 3.5GHz bands

Electrical Specifications

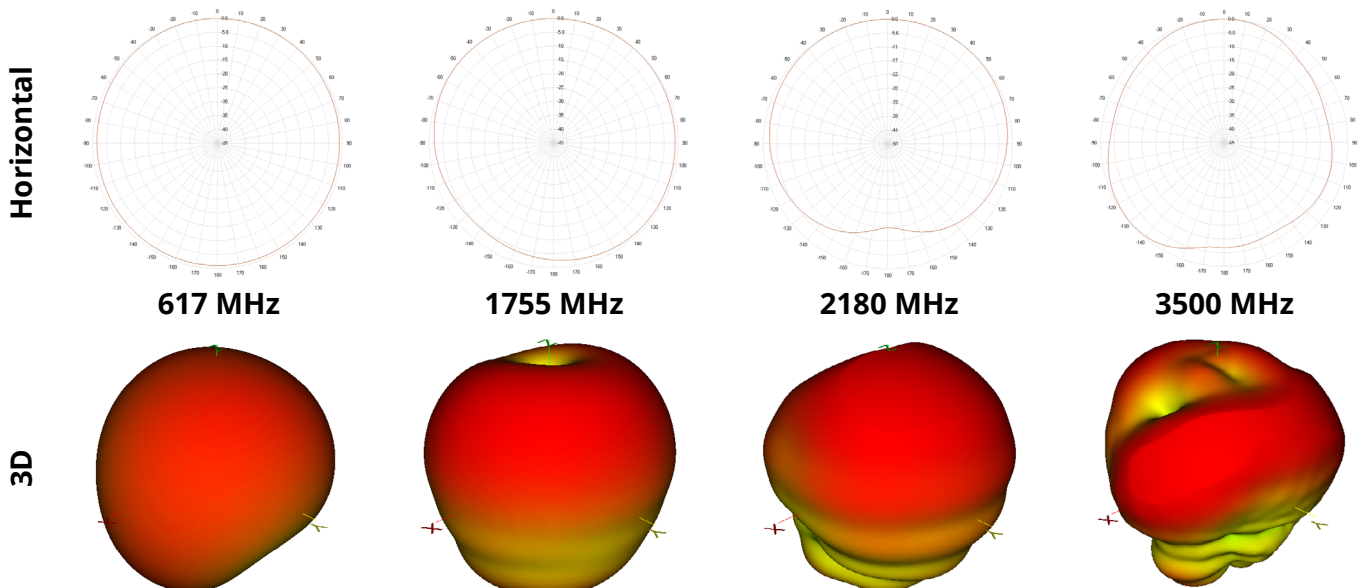
Frequency Band [MHz]	617-960	1695-2180	2180-2690	3300-4200
Input Connector Type	1x 4.3-10 (F) w/ Pigtail (12", 30 cm)			
VSWR (max.) /RL (min.)	1.7:1 / 11.8 dB		1.5:1 / 14.0 dB	1.7:1 / 11.8 dB
Impedance	50 Ω			
Polarization	Vertical			
Horizontal Beamwidth	Omni (360°)			
Gain (max.)	2.9 dBi	6.7 dBi	6.4 dBi	6.6 dBi
Gain (avg.)	2.0 dBi	4.7 dBi	4.7 dBi	5.9 dBi
Max Power / Port	50 W @77°F (25°C)			
PIM @ 2x43 dBm	<-153 dBc		<-145 dBc	

Mechanical Specifications

Operating Temperature	-40° to 158°F (-40° to +70°C)
Antenna Weight	0.90 lbs (0.41 kg)
Antenna Dimension (Height x Diameter)	2.8" (72 mm) x 8.2" (208 mm)
Radome Material	PC / ABS, UL 94-V0 Compliant
Pigtail	Plenum Rated
RoHS	Compliant
Radome Color	RAL 9016 (White)*
Ingress Protection	Indoor

* Radome can be painted with recommended paint "Krylon fusion for plastic"

Antenna Patterns



Copyright © 2021– Galtronics Corporation Ltd.

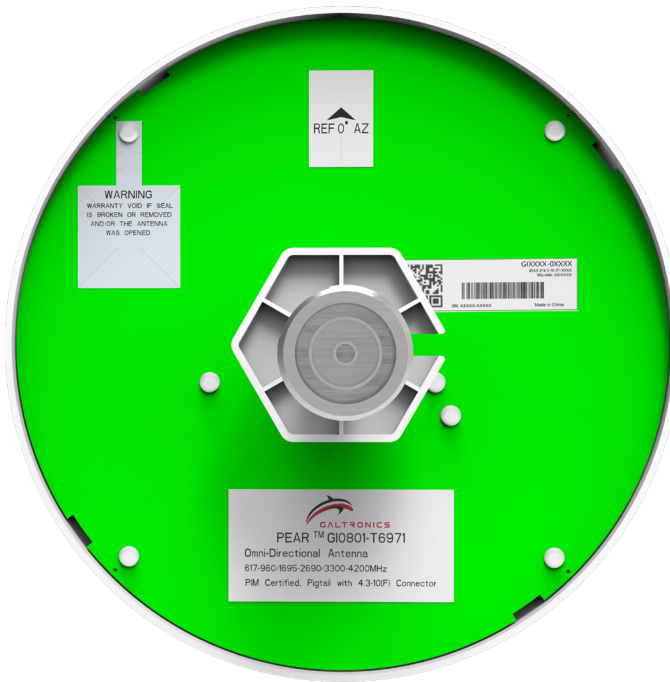
Proprietary Information. All rights reserved. Galtronics reserves the right to modify or amend any antenna or specification without prior notice.



GALTRONICS

A Baylin Technologies Company

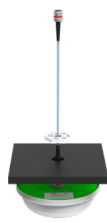


Back View and Port Description



Part Numbers, Ordering Options and Accessories

Description:	Connectors	Color	Included Accessories	Part Number:
Small Form Factor SISO Antenna	1x 4.3-10(F)	White (RAL 9016)	Standard Below Ceiling Mounting Bracket	GI0801-T6971-112

Mounting Brackets and Part Numbers

Mounting Bracket(s):	Part Number:
<p>Below Ceiling Installation (Standard)</p> <p>Fasteners for below suspended ceiling mounting included with antenna. Maximum ceiling thickness 1.18" (30mm).</p> <p>Instructions: Drill a 1.18" (30mm) hole in the ceiling tile. Secure the antenna to the ceiling tile with the supplied plastic nut.</p> <p>Included with antenna.</p>	
<p>Hard Ceiling Installation Bracket (Optional)</p> <p>The hard ceiling mounting bracket allows for installation onto drywall ceilings possible by eliminating additional access above the antenna.</p>	 <p>62-31-09</p>
<p>Above Ceiling Installation Bracket (Optional)</p> <p>The antenna can be installed above suspended ceilings by using this optional mounting kit.</p>	 <p>62-46-03</p>

Mating Connector Torque:
4.3-10 44.3 in-lb (5 Nm)

Copyright © 2021– Galtronics Corporation Ltd.

Proprietary Information. All rights reserved. Galtronics reserves the right to modify or amend any antenna or specification without prior notice.