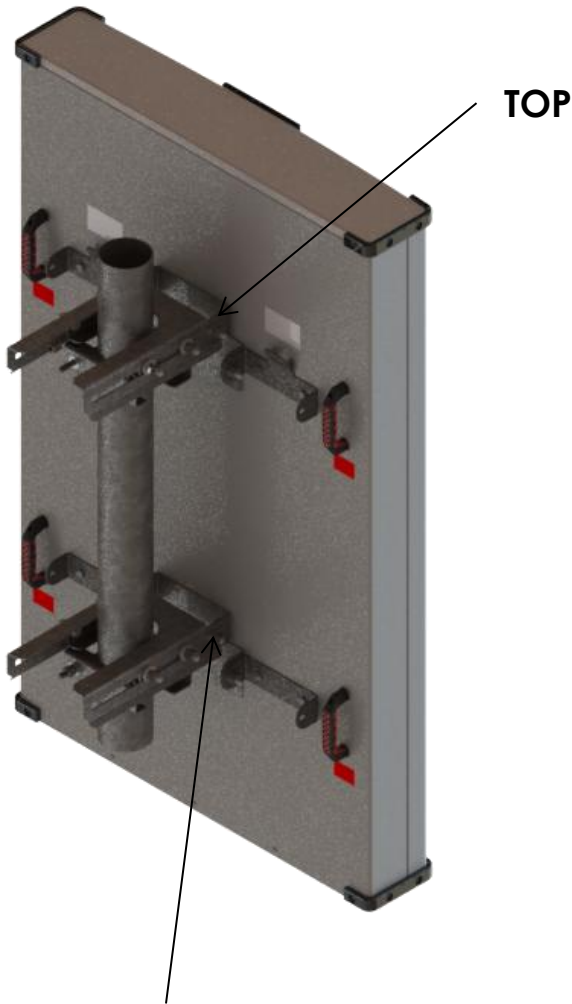


Mounting Bracket

For Multibeam Antennas

DESCRIPTION:

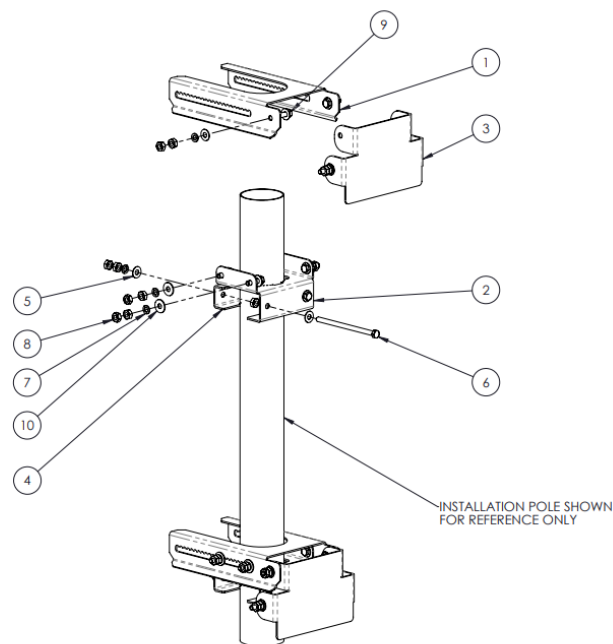
This steel mounting bracket is suitable for Galtronics outdoor Multibeam antennas and can be assembled onto poles ranging from Ø2" (Ø50.8 mm) to Ø4.5"(Ø114.3 mm).



Specifications	
Model Number	MK-08197
Environmental Conditions	Outdoor
Weight	38.5lb (17.5kg)
Material	Galvanized Steel
Wind Speed Resistance	150mph (240kmh)
Mounting Style	Pole Mount
Pole Diameter Range	Ø2" (Ø50.8mm) to Ø4.5" (Ø114.3mm)
Mounting Hardware to Antenna	Supplied with Bracket
Mounting Hardware to Pole	Supplied with Bracket
Tilt Range	-20° to +20°

A90-00224 Revision: 01; 12-FEB-2026

Assembly Drawing



ITEM	QTY	DESCRIPTION
1	2	BRACKET, INDEX
2	2	BRACKET, TOP FRONT
3	2	MOUNTING BRACKET ADAPTER
4	2	REAR CLAMP
5	32	WASHER, FLAT, 1/2" SCREW, HDG STEEL
6	4	SCREW, HEX HEAD, 1/2-13 UNC", 8" L, HDG STEEL
7	20	WASHER, SPLIT LOCK, 1/2" SCREW, HDG STEEL
8	40	NUT, HEX, 1/2"-13 UNC, HDG STEEL
9	16	SCREW, HEX HEAD, 1/2"-13 UNC, 1-3/4" L, HDG STEEL
10	8	WASHER, FLAT, 1/2" SCREW, 1-3/8" OD, HDG STEEL

Figure 1. Exploded View of Mounting Bracket Assemblies

A90-00224 Revision: 01; 12-FEB-2026

Assembly Instructions

Step 1 – Fasten Mounting Bracket Adaptor to Antenna:

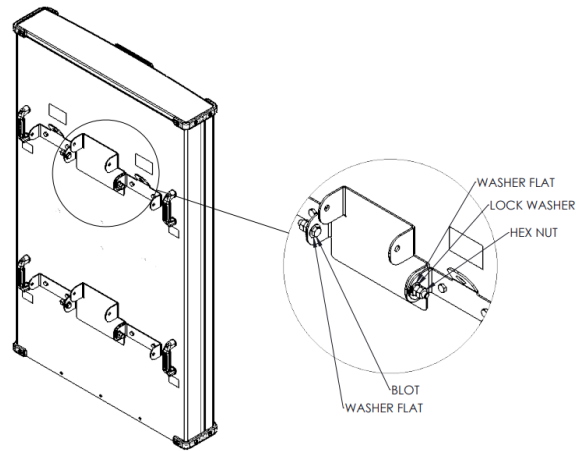


Figure 2. Exploded View of Mounting Bracket Assemblies

Attach the mounting bracket adaptor to antenna using the 4x ½"-13 UNC X 1-3/8" hex head screws and nuts. Torque Hex Nuts to 41 N·m (30 ft·lbf).

Step 2 – Fasten Bracket assemblies to pole:

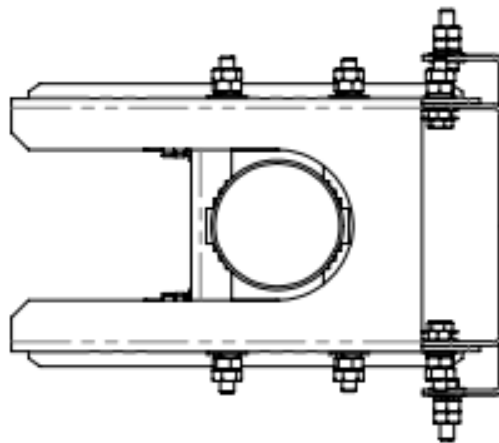


Figure 3. Mounting bracket to pole installation, Bottom and Top bracket assemblies – TOP VIEW

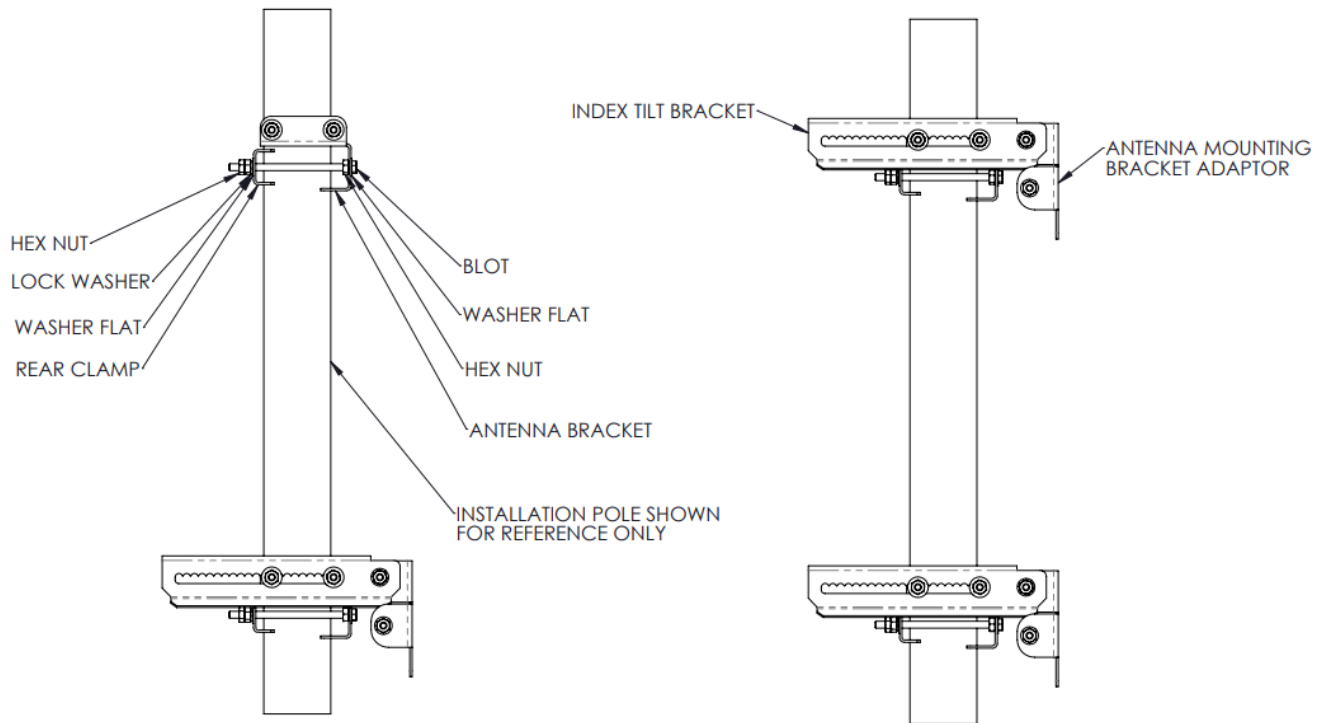


Figure 4. Mounting bracket to pole installation - SIDE VIEW

Step 3 – Attach antenna to brackets:

Attach the antenna onto the mounting bracket adaptor using the 4x ½"-13 UNC X 1-3/8" hex head screws and nuts. Torque Hex Nuts to 41 N·m (30 ft·lbf).