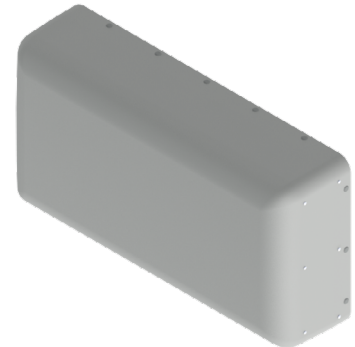


30°/60° 4-Port Directional Panel Antenna [698-960, 1695-2690 & 3300-4200 MHz]

GP2704-W7749

Description:

- Single-sector 4-Port MIMO antenna for high capacity stadium venue applications
- 30°/60° beamwidth dual-polarized covering 700/800/900 MHz bands, AWS/PCS/WCS/BRS and C/CBRS Bands.
- 2x ports for 698-960, 1695-2690 and 3300-4200 MHz
- 2x ports for 3300-4200 MHz



698-960, 1695-2690 & 3300-4200 MHz
4-Port Directional Panel Antenna

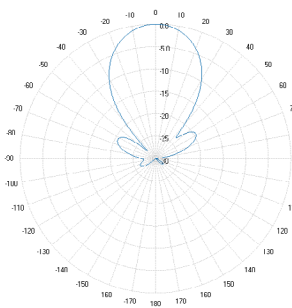
Electrical Specifications

Frequency Band [MHz]	698-806	806-896	896-960	1695-2200	2300-2400	2496-2690	3300-3550	3550-3700	3700-4200
Port Designator	P1 - P2				P3 - P4				
Port-to-Port Isolation (dB)	20								
VSWR /RL (dB)	1.5:1 / 14.0								
Impedance (Ω)	50								
Polarization (°)	Dual slant 45 (±45)								
Horizontal Beamwidth (°)	36	33	29	29	23	22	27	25	24
Vertical Beamwidth (°)	62	57	52	63	61	49	60	63	61
Gain, (dBi, max.)	11.6	11.8	11.6	12.7	12.5	11.0	12.4	12.3	12.9
Gain, (dBi, avg.)	11.0	11.3	11.2	11.2	11.3	10.5	11.6	11.6	11.8
Front-to-Back Ratio@180° (dB)	30								
Max Power / Port (Watt)	100					100			
PIM @ 2x43 dBm (dBc)	-153					-145			

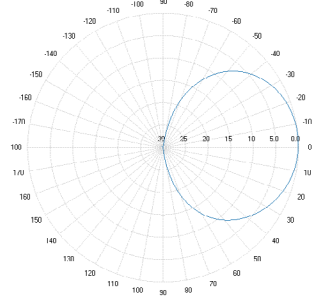
Mechanical Specifications

Operating Temperature	-40° to 158°F (-40° to +70°C)
Antenna Weight	10.5 lbs (4.76 kg)
Antenna Dimension (Height x Width x Depth)	13.9" (353.5 mm) x 27.0" (685.5 mm) x 6.9" (175.1 mm)
Connector Type	4 x 4.3-10 (F)
Radome Material	ASA
RoHS	Compliant
Radome Color	Gray
Environment Rating	Outdoor
Wind Survival Rating	150 mph (241 km/h)

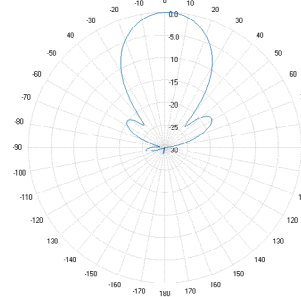
2D Antenna Patterns



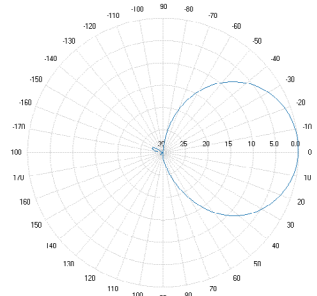
776 MHz



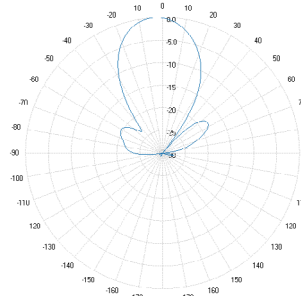
806 MHz



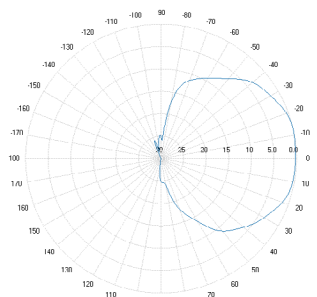
925 MHz



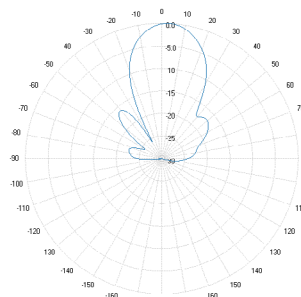
1865 MHz



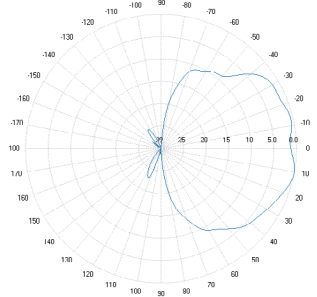
2315 MHz



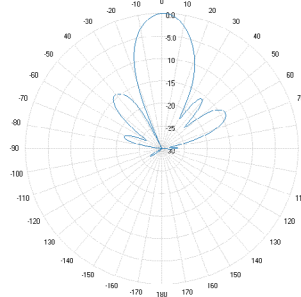
3450 MHz



3550 MHz

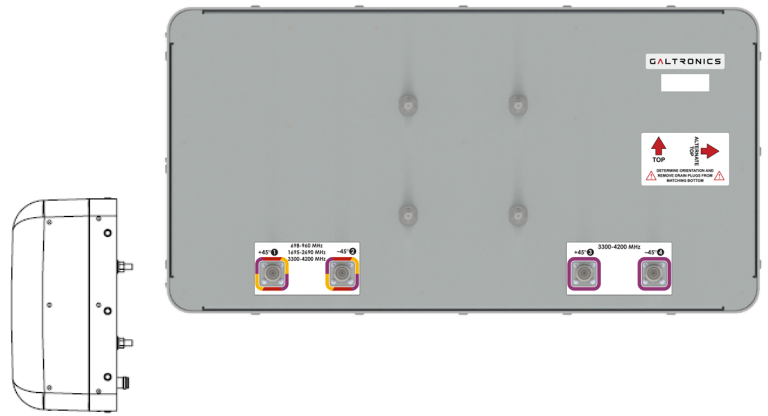
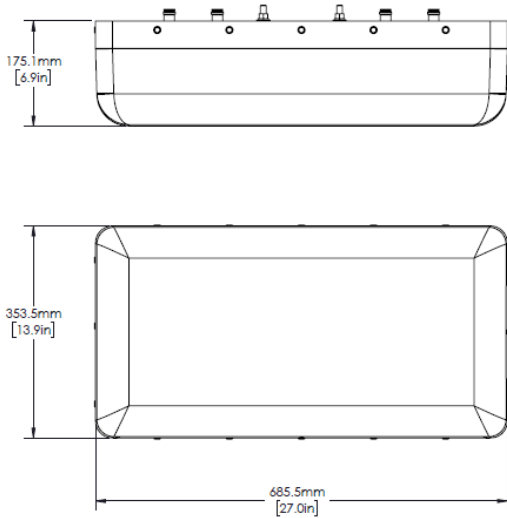


4000 MHz



RFD#: W7749 ; Revision: R1 ; Release Date: September 27, 2024;

Antenna Outline and Back Panel Port Configuration/Labeling

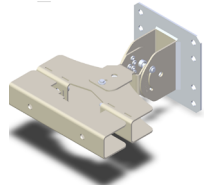
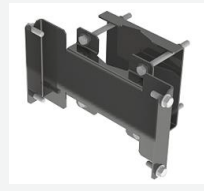


Mating Connector Torque:
4.3-10: 3.7 ft-lb (5 Nm)

Part Numbers & Ordering Options

Description	Color	Mounting Kit	Part Number
4-Port 30° x 60° Pattern Directional Panel Antenna with 4x 4.3-10 (F) Connectors	Gray	Includes 62-45-09 mounting kit	GP2704-W7749-112

Mounting Kit and Accessories Part Numbers

Description:	Part Number:
<p>Heavy Duty Mounting Bracket (150 mph) [INCLUDED]</p> <p>The mounting bracket allows wall and pole mounting with flexible and continuous antenna adjustment in the horizontal and vertical plane.</p>	 <p>62-45-09</p>
<p>Heavy Duty Mounting Bracket (150 mph) [OPTIONAL]</p> <p>This standard mounting bracket offers an easy installation solution to mount the antenna to either a horizontal or a vertical pole.</p>	 <p>MK-07305 (Sold Separately)</p>

RFD#: W7749 ; Revision: R1 ; Release Date: September 27, 2024;