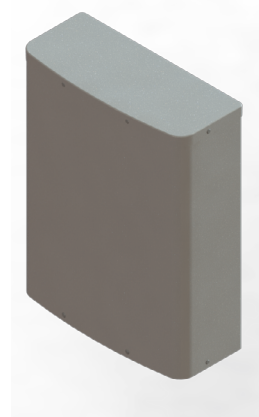


3-Beam 2x2 Multibeam Panel Antenna [1695-2690 MHz]

GP2606-07912

Description:

- 2x2 MIMO 3-Beam antenna for high-capacity stadium/venue or special events applications
- 3-Beam (6-port) 1695-2690 MHz; each beam with 2x2 MIMO capability
- 6° Fixed Electrical Downtilt in all bands
- Patent pending technology allows for stable azimuth beam directions over the entire operating frequency band
- Excellent alternative to large lens-based multibeam antennas
- Optional heavy-duty transport case to prevent damage for multiple deployment scenarios



2x2 MIMO 1695-2690 MHz 3-Beam Panel Antenna

Electrical Specifications

Frequency Band [MHz]	1695-1910	1930-2020	2110-2200	2305-2360	2496-2690
Gain, max. (dBi)	17.4	17.7	18.2	19.0	19.6
Gain, avg. (dBi)	16.6	16.9	17.6	17.5	18.6
Azimuth Beamwidth (°)	25	25	23	22	21
Azimuth Beamwidth, 10dB (°)	46	44	42	39	37
Azimuth Beam Spacing (°)	33				
Horizontal Coverage (°)	120				
Azimuth Beam Crossover (dB)	6.2	6.8	7.6	8.2	9.3
Elevation Beamwidth (°)	15.8	15.2	12.8	12.3	11.1
Elevation Beamwidth, 10dB (°)	28	27	22	21	19
Electrical Downtilt (°)	6 FET (per each 2x2 beam cluster)				
First Upper Sidelobe Suppression (dB)	22	19	17	20	21
Front-to-Back Ratio, 180° (dB)	40				
Cross-Pol Discrimination @ Boresight (dB)	22				
VSWR / RL (dB)	1.5:1 / 14				
Port-to-Port Isolation, Intrabeam (dB)*	25				
Port-to-Port Isolation, Interbeam (dB)**	15	16	19	20	18
PIM @ 2x43 dBm (dBc)	-153				
Max Power per Port (W)	100				
Polarization (°)	Dual slant 45 (±45)				
Impedance (Ω)	50				

* Port-to-port isolation between each cluster of two ports in the same 2x2 MIMO beam

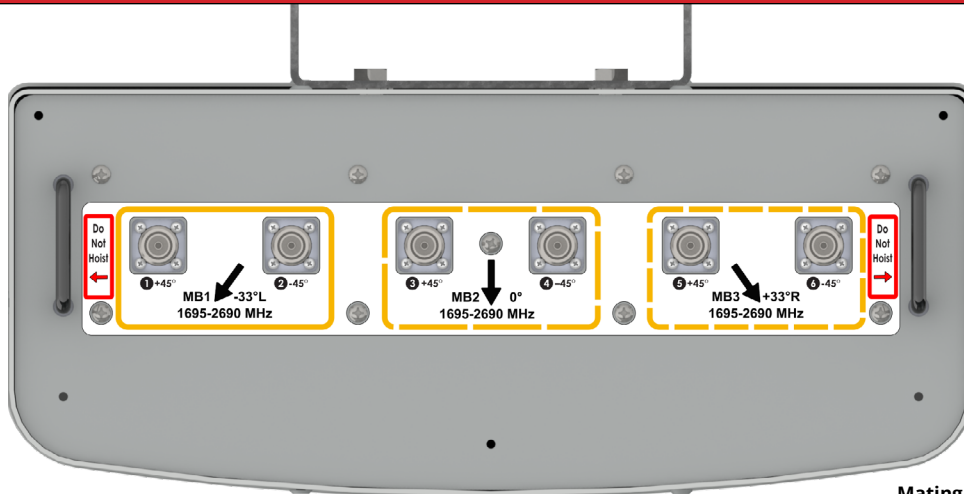
** Port-to-port isolation between any combination of ports between different beams

RFD#: 7912 ; Revision: R8 ; Release Date: January 11, 2024;

Electrical Specifications - BASTA

Frequency Band [MHz]	1695-1910	1930-2020	2110-2200	2305-2360	2496-2690
Gain Over All Tilts, avg. (dBi)	16.6	16.9	17.6	17.5	18.6
Gain Over All Tilts Tolerance (dB)	0.8	0.6	0.7	1.5	1.1
AZ Beamwidth Tolerance (°)	2.5	2.4	2.8	3.5	3.5
EL Beamwidth Tolerance (°)	0.7	0.7	0.5	0.4	0.5
Upper Sidelobe Suppression, Peak to +20° (dB)	20.8	15.9	15.3	14.1	17.6
Front-to-Back Ratio, Total Power, +/-30° (dB)	26.6	30.3	30.5	27.5	27.4
Cross-Polar Discrimination at Boresight (dB)	17.0	21.6	22.0	14.8	19.0
Azimuth Beam Peak Tolerance (°)	1.0	0.5	0.6	1.0	1.0
Azimuth Beam Crossover Tolerance (dB)	0.9	0.8	1.1	1.6	1.5

Bottom Plate & Port Designation Details

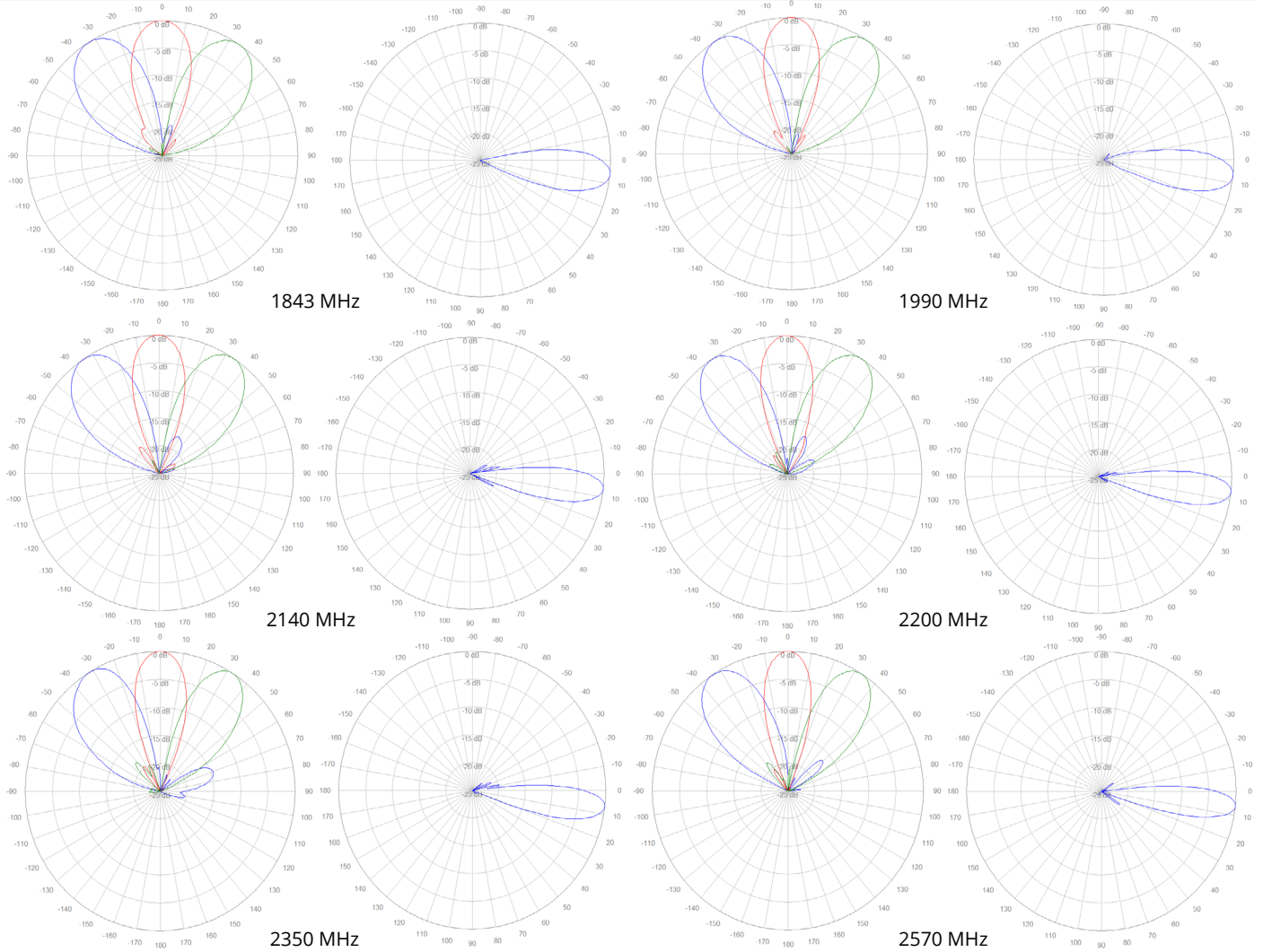


Mating Connector Torque:
4.3-10 44.3 in-lb (5 Nm)

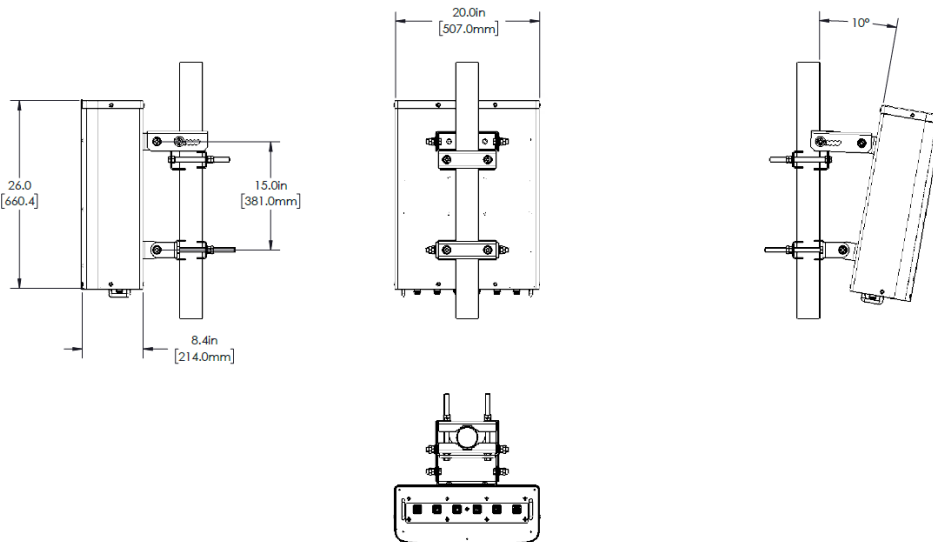
Port/Beam Designator Table

Frequency Range	Ports	Beam Assignment	AZ Beam Direction	Downtilt
1695-2690 MHz	1 - 2	MB1	-33° L	6° Fixed
1695-2690 MHz	3 - 4	MB2	0°	6° Fixed
1695-2690 MHz	5 - 6	MB3	+33° R	6° Fixed

2D Antenna Patterns



Antenna Outline



Copyright © 2024 – Galtronics Corporation Ltd.

Proprietary Information. All rights reserved. Galtronics reserves the right to modify or amend any antenna or specification without prior notice.

Mechanical Specifications

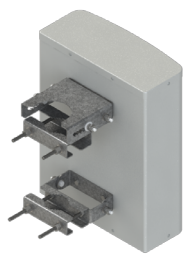
Operating Temperature	-40° to 158°F (-40° to +70°C)
Antenna Weight	28.5 lbs (12.9 kg)
Antenna Bracket Weight	15.3 lbs (6.9 kg)
Antenna Dimension (Height x Width x Depth)	26.0" (660.4 mm) x 20.0" (507.0 mm) x 8.4" (214.0 mm)
Input Connector Type	6x 4.3/10 (F)
Radome Material	ASA
Radome Color	Gray
Environment Rating	Outdoor
Wind Load, Front (@ 150 km/h)*	349.1 N / 78.0 lbf
Wind Load, Side (@ 150 km/h)*	175.8 N / 40.0 lbf
Wind Load, Maximum (@ 150 km/h)*	464.5 N / 104.0 lbf
Wind Survival Rating	150 mph (241 km/h)

* Wind load based on calculations according to TIA-222-H

Part Numbers & Ordering Options

Description	Color	Mounting Kit	Part Number
2x2 MIMO 1695-2690 MHz 3-Beam Antenna with 6x 4.3-10 (F) Connectors	Gray	Includes MK-07915 mounting kit assemblies	GP2606-07912-112
2x2 MIMO 1695-2690 MHz 3-Beam Antenna with 6x 4.3-10 (F) Connectors and Heavy Duty Transport Case	Gray	Includes MK-07915 mounting kit assemblies	GP2606-07912-212

Mounting Brackets & Optional Accessories

Description:	Part Number:
<p>Heavy Duty Mounting Bracket (wind speed of 150 mph) [Included]</p> <p>The MK-07915 standard mounting bracket allows for easy installation of this Galtronics Multibeam Antenna. It provides 0°-10° of mechanical downtilt adjustability, and fits pole diameters ranging from 2" to 5".</p> <p>Note: The MK-07915 mounting bracket can also be ordered separately.</p>	 <p>MK-07915</p>

RFD#: 7912 ; Revision: R8 ; Release Date: January 11, 2024;