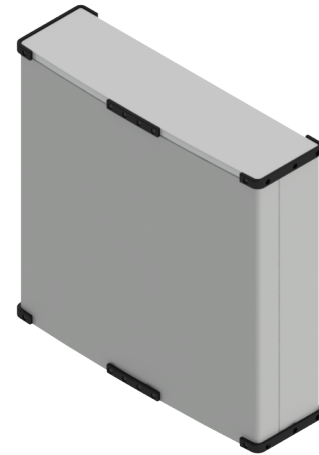


C-Band 9-Beam 90° Sector 4x4 MIMO Panel Antenna [3300-3550 & 3700-4000 MHz]

GP3936-08150

Description:

- 9-beam antenna for high-capacity stadium/venue or special events applications
- 9-beam with each beam 4x4 MIMO (36-port), covering 3300-3550 & 3700-4000 MHz
- Patent pending technology allows for stable azimuth beam directions over the entire operating frequency band
- Excellent alternative to large lens-based multibeam antennas
- External ruggedized features of the antenna enclosure provide added protection during the installation process
- Optional Heavy-duty transport case to prevent damage for multiple deployment scenarios



4x4 MIMO 3300-3550 & 3700-4000 MHz 9-beam Panel Antenna

Electrical Specifications

Frequency Band [MHz]	3300-3550	3700-4000
Gain, max. (dBi)	22.0	22.4
Gain, avg. (dBi)	20.3	19.8
Azimuth Beamwidth (°)	6.2	6.0
Azimuth Beamwidth, 10dB (°)	10.6	10.4
Azimuth Beam Spacing (°)	10	
Azimuth Beam Crossover (dB)	9	10
Elevation Beamwidth (°)	14	13
Elevation Beamwidth, 10dB (°)	24	22
Electrical Downtilt (°)	6 FET (per each 4x4 beam cluster)	
First Upper Sidelobe Suppression (dB)	20	18
Front-to-Back Ratio, 180° (dB)	45	
Cross-Polar Discrimination @ Boresight (dB)	23	
VSWR / RL (dB)	1.5:1 / 14.0	
Port-to-Port Isolation, Intrabeam* (dB)	25	
Port-to-Port Isolation, Interbeam** (dB)	14	
PIM @ 2x43 dBm (dBc)	-145	
Max Power per Port (W)	100	
Polarization (°)	Dual slant 45 (±45)	
Impedance (Ω)	50	

* Port-port isolation between each cluster of four ports in the same 4x4 MIMO beam

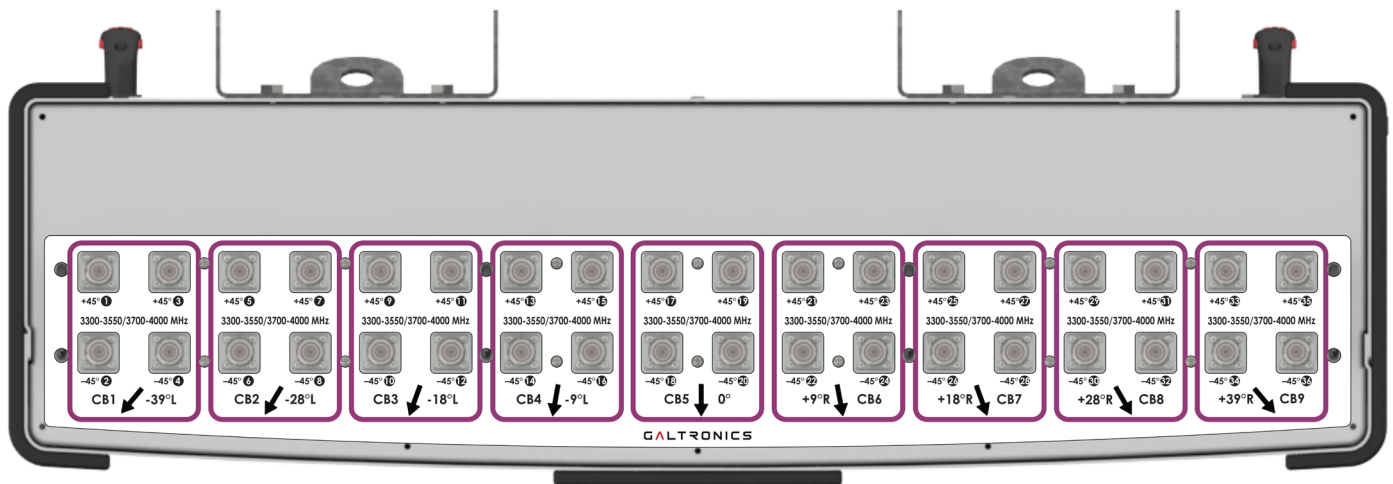
** Port-port isolation between any combination of ports between different beams

RFD#: 8150 ; Revision: R1 ; Release Date: August 1st, 2024;

Electrical Specifications - BASTA

Frequency Band [MHz]	3300-3550	3700-4000
Gain Over All Tilts, avg. (dBi)	20.3	19.8
Gain Over All Tilts Tolerance (dB)	1.9	2.1
AZ Beamwidth Tolerance (°)	0.9	0.6
EL Beamwidth Tolerance (°)	0.9	1.2
Upper Sidelobe Suppression, Peak to +20° (dB)	14.0	14.0
Front-to-Back Ratio, Total Power, +/-30° (dB)	34.4	34.6
Cross-Polar Discrimination at Boresight (dB)	20.4	17.2
Azimuth Beam Peak Tolerance	0.8	0.6
Azimuth Beam Crossover Tolerance	3.0	2.8

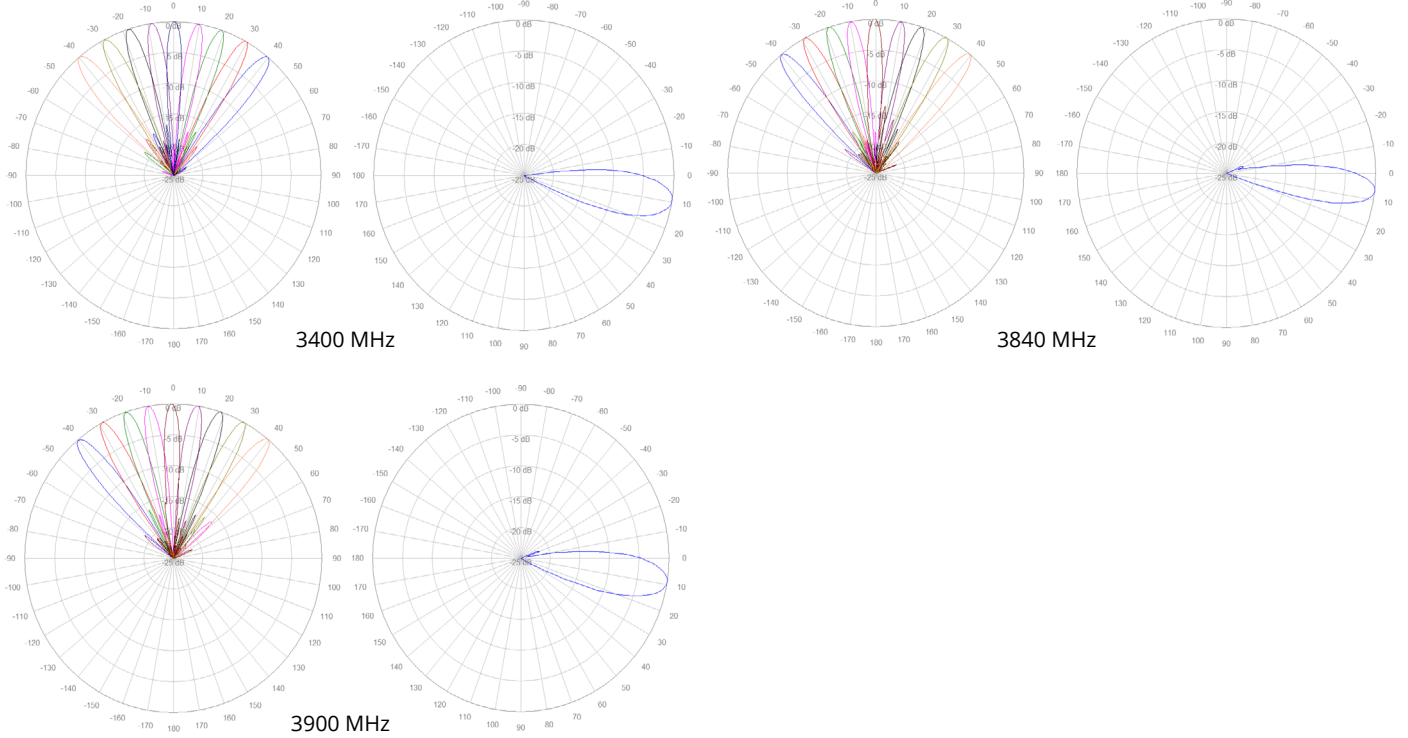
Bottom Plate & Port Designation Details



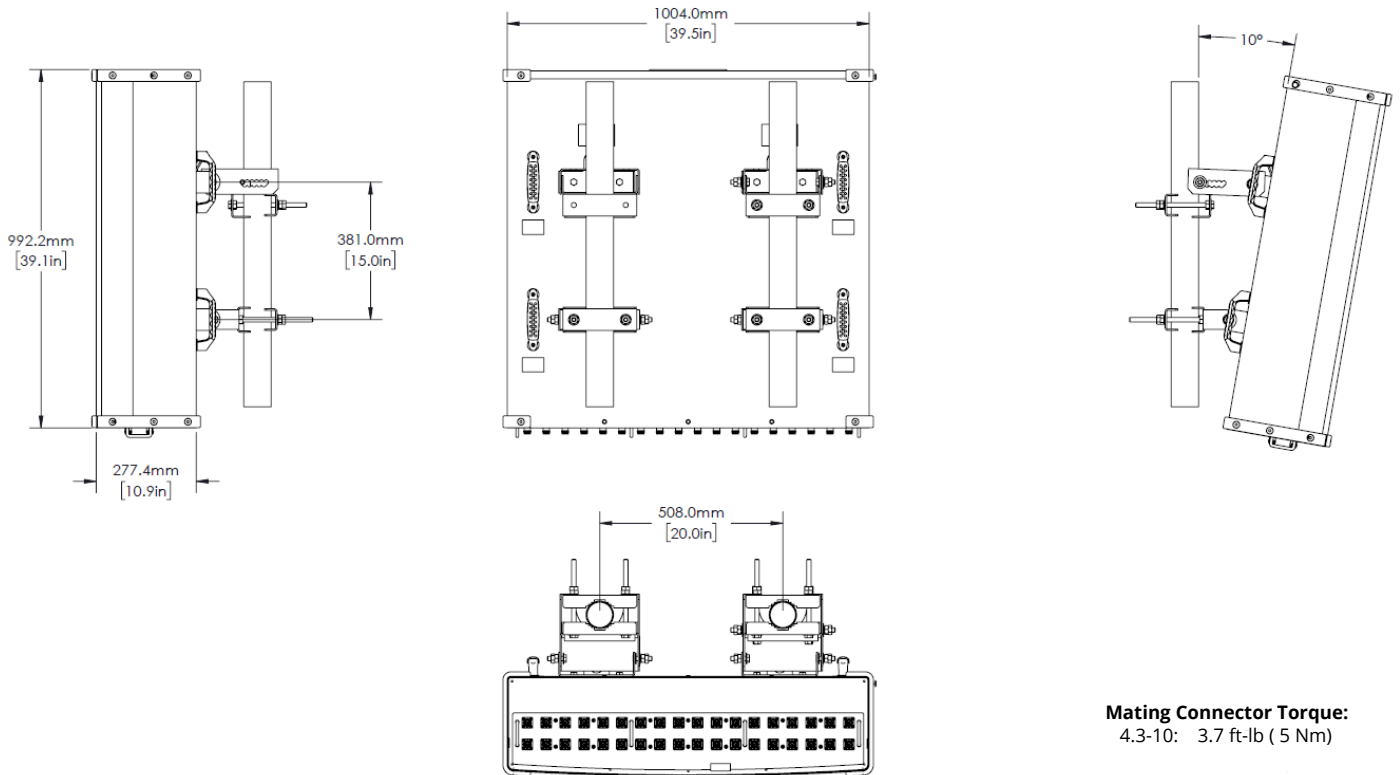
Port/Beam Designator Table

Frequency Range	Ports	Beam Assignment	AZ Beam Direction	Downtilt
3300-3550 & 3700-4000 MHz	1 - 4	CB1	-39° L	6° Fixed
3300-3550 & 3700-4000 MHz	5 - 8	CB2	-28° L	6° Fixed
3300-3550 & 3700-4000 MHz	9 - 12	CB3	-18° L	6° Fixed
3300-3550 & 3700-4000 MHz	13 - 16	CB4	-9° L	6° Fixed
3300-3550 & 3700-4000 MHz	17 - 20	CB5	0°	6° Fixed
3300-3550 & 3700-4000 MHz	21 - 24	CB6	+9° R	6° Fixed
3300-3550 & 3700-4000 MHz	25 - 28	CB7	+18° R	6° Fixed
3300-3550 & 3700-4000 MHz	29 - 32	CB8	+28° R	6° Fixed
3300-3550 & 3700-4000 MHz	33 - 36	CB9	+39° R	6° Fixed

2D Antenna Patterns



Antenna Outline



RFD#: 8150 ; Revision: R1 ; Release Date: August 1st, 2024;

Mechanical Specifications

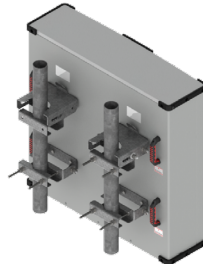
Operating Temperature	-40° to 158°F (-40° to +70°C)
Antenna Weight	92.6 lbs (42.0 kg)
Antenna Bracket Weight (2 Brackets)	15.3 lbs (6.9 kg), 2x Brackets Per Antenna
Antenna Dimension (Height x Width x Depth)	39.1" (992.2 mm) x 39.5" (1004.0 mm) x 10.9" (277.4 mm)
Input Connector Type	36x 4.3/10 (F)
Radome Material	ASA w/ Heavy Duty Top/Bottom Caps
Radome Color	Gray
Environment Rating	Outdoor
Wind Load, Front (@ 150 km/h)*	1221.0 N / 274 Lbf
Wind Load, Back (@ 150 km/h)*	1243.0 N / 279 Lbf
Wind Load, Side (@ 150 km/h)*	357.0 N / 80 Lbf
Wind Load, Max (@ 150 km/h)*	1320.4 N / 297 Lbf
Wind Survival Rating	150 mph (241 km/h)

*Wind load based on calculations according to TIA-222-H

Part Numbers & Ordering Options

Description	Color	Mounting Kit	Part Number
4x4 MIMO 3300-3550 & 3700-4000MHz 9-Beam Antenna, 6° FET with 36x 4.3-10 (F) Connectors	Gray	Includes 2x MK-07915 mounting kit assemblies	GP3936-08150-112
4x4 MIMO 3300-3550 & 3700-4000MHz 9-Beam Antenna, 6° FET with 36x 4.3-10 (F) Connectors and Heavy Duty Transport Case	Gray	Includes 2x MK-07915 mounting kit assemblies	GP3936-08150-212

Mounting Brackets & Optional Accessories

Description:	Part Number:
<p>Heavy Duty Mounting Bracket (wind speed of 150 mph) [2x Included]</p> <p>The MK-07915 standard mounting bracket allows for easy installation of this Galtronics Multibeam Antenna. It provides 0°-10° of mechanical downtilt adjustability, and fits pole diameters ranging from 2" to 5".</p> <p>Note: The MK-07915 mounting bracket can also be ordered separately.</p>	 <p>MK-07915</p>

RFD#: 8150 ; Revision: R1 ; Release Date: August 1st, 2024;