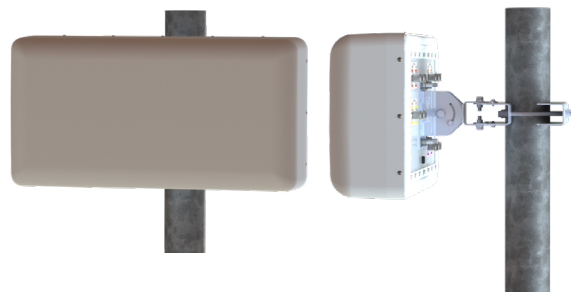


30°/60° 10-Port Directional Panel Antenna [617-896, 1695-2690, 3300-4200 and 5150-5925 MHz]

GP2710-B7061

Description:

- Single-sector 10-Port MIMO antenna for high capacity stadium venue applications
- 30°/60° beam width dual-polarized covering 600 MHz/LTE/CELL, AWS/PCS/WCS/BRS, C-band and LAA / U-NII Bands.
- Low and 2x Mid band ports are internally diplexed.
- 2x ports for 617-896 and 1695-2690 MHz
- 2x ports for 1695-2690 MHz
- 4x ports for 3300-4200 MHz
- 2x ports for 5150-5925 MHz*



617-896, 1695-2690, 3300-4200 and 5150-5925 MHz
10-Port Directional Panel Antenna

*Compliant to 789033 D02 General U-NII Test Procedures New Rules v01r04: The antenna meets current U-NII-1 requirements for gain and upper side-lobe performance. Guidelines for Compliance Testing of Unlicensed National Information Infrastructure (U-NII) Devices - Part 15, Sub-part E

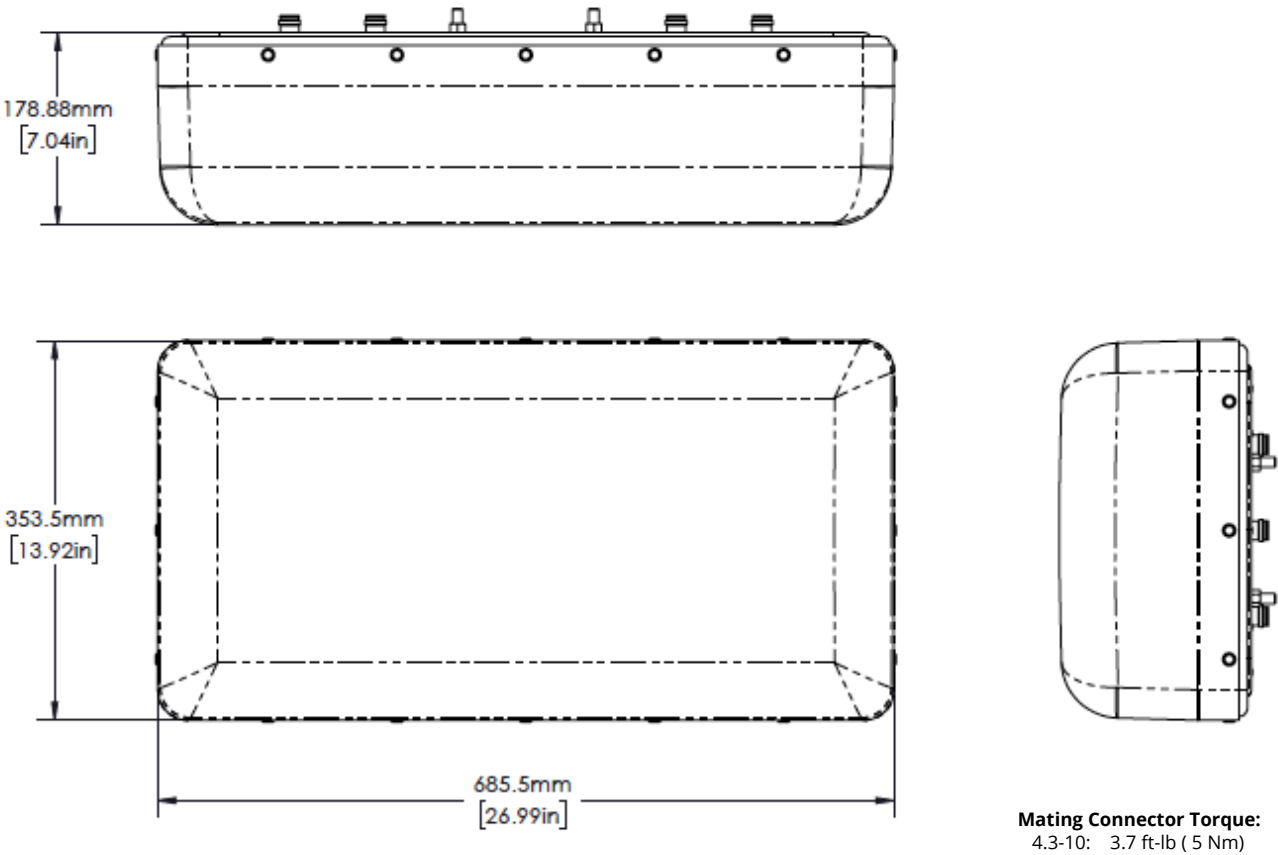
Electrical Specifications

Frequency Band [MHz]	617-698	698-806	806-896	1695-2200	2300-2400	2496-2690	3300-3550	3550-3700	3700-4200	5150-5925
Port Designator	P1 - P2						P5 - P8			P9 - P10
				P3 - P4						
Port-to-Port Isolation (dB)	20									
VSWR /RL (dB)	1.5:1 / 14.0									
Impedance (Ω)	50									
Polarization (°)	Dual slant 45 (±45)									
Gain, dBi (max.)	10.5	11.2	11.4	12.7	12.2	12.7		12.8		5.5
Gain, dBi (avg.)	10.0	10.5	11.1	11.3	11.3	11.3		11.8		4.9
Horizontal Beamwidth (°)	41	37	32	31	25	23		28		35
Vertical Beamwidth (°)	66	64	59	64	67	57		70		22
Front-to-Back Ratio@180° (dB)	30									
Max Power / Port (Watt)	100						100			1*
PIM @ 2x 43 dBm (dBc)	-153						-145			N/A

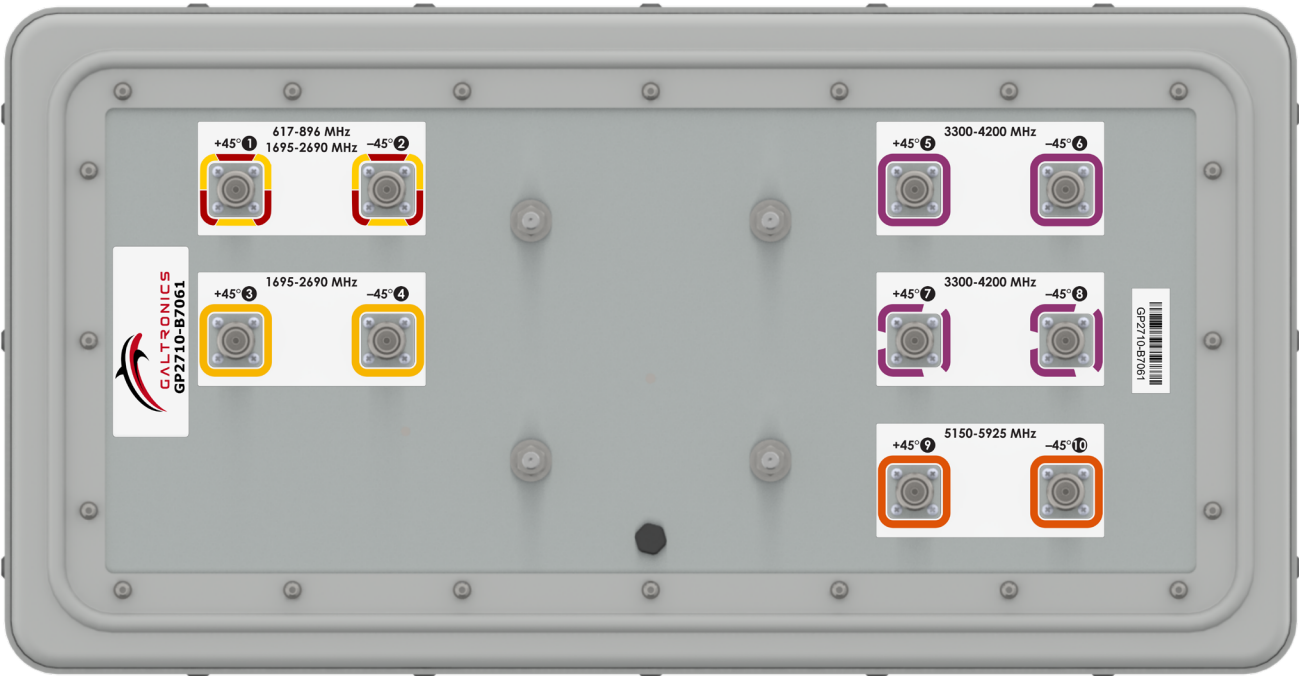
Mechanical Specifications

Operating Temperature	-40° to 158°F (-40° to +70°C)
Antenna Weight	12 lbs (5.5 kg)
Antenna Dimension (Height x Width x Depth)	13.9" (353.5 mm) x 27.0" (685.5 mm) x 7.0" (178.9 mm)
Connector Type	10 x 4.3-10(F)
Radome Material	ASA
RoHS	Compliant
Radome Color	Gray
Environment Rating	Outdoor (IP65)
Wind Survival Rating	150 mph (241 km/h)

Antenna Outline

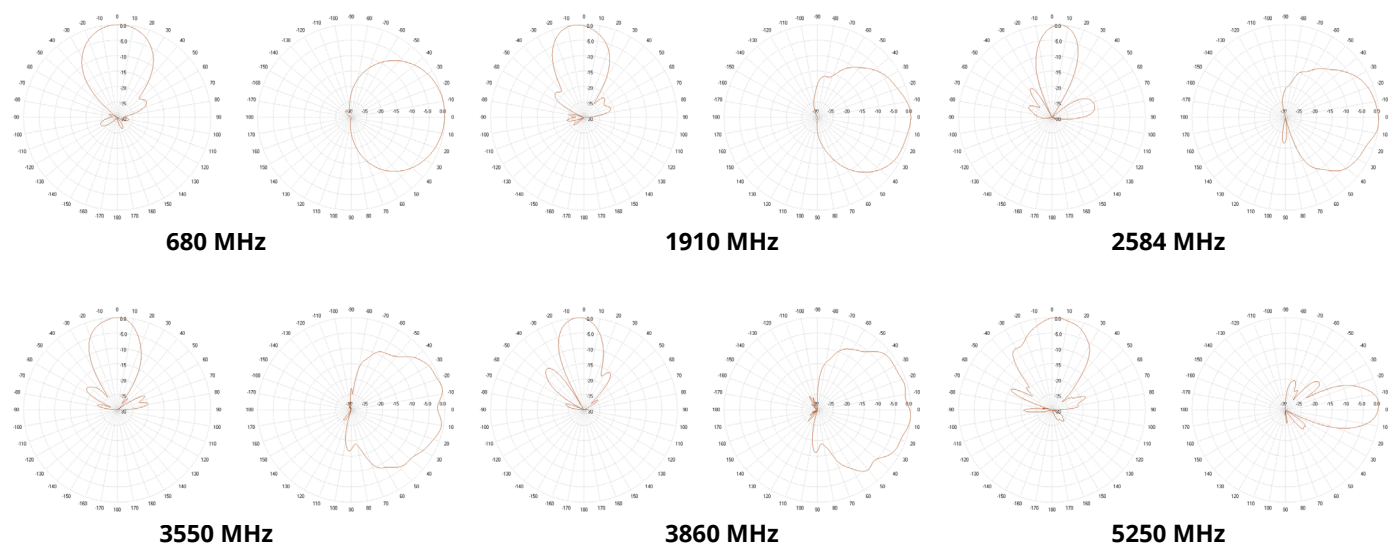


Back Panel Port Configuration/Labeling



RFD#: B7061 ; Revision: R2 ; Release Date: July 24 , 2024;

Antenna Patterns



Part Numbers & Ordering Options			
Description	Color	Mounting Kit	Part Number
10-Port 30° x 60° Pattern Directional Panel Antenna with 10x 4.3-10 (F) Connectors	Gray	Includes 62-45-09 mounting kit	GP2710-B7061-112

Mounting Kit and Accessories Part Numbers	
Description:	Part Number:
Heavy Duty Mounting Bracket (150 mph) [INCLUDED] The mounting bracket allows wall and pole mounting with flexible and continuous antenna adjustment in the horizontal and vertical plane.	 62-45-09
Heavy Duty Mounting Bracket (150 mph) [OPTIONAL] This standard mounting bracket offers an easy installation solution to mount the antenna to either a horizontal or a vertical pole.	 MK-07305 (Sold Separately)

RFD#: B7061 ; Revision: R2 ; Release Date: July 24, 2024;