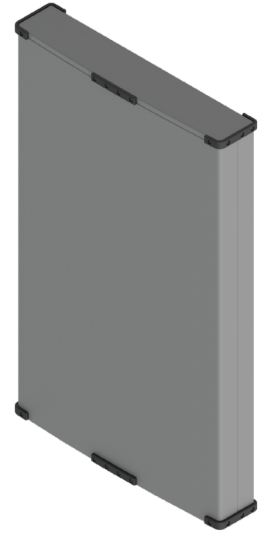


## Dual-Band 6/6 Multibeam 4x4 Antenna [1695-2690/3300-4000 MHz]

### GP6548-07983

#### Description:

- 4x4 MIMO 6/6 beam antenna for high-capacity stadium/venue or special events applications
- 6-beams (24-ports) 1695-2690 MHz; each beam with 4x4 MIMO capability
- 6-beams (24-ports) 3300-4000 MHz; each beam with 4x4 MIMO capability
- 6° Fixed Electrical Downtilt in all bands
- Patent pending technology allows for stable azimuth beam directions over the entire operating frequency band
- Excellent alternative to large lens-based multibeam antennas
- External ruggedized features of the antenna enclosure provide added protection during the installation process
- Heavy-duty transport case is provided to prevent damage for multiple deployment scenarios



4x4 MIMO 1695-2690 & 3300-4000 MHz 6/6 Beam Antenna

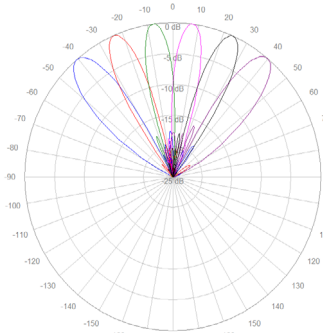
Electrical Specifications								
Frequency Band [MHz]	1695-1910	1930-2020	2110-2200	2305-2360	2496-2690	3300-3550	3550-3700	3700-4000
Gain, max. (dBi)	20.1	21.0	21.3	21.4	22.0	18.2	17.8	18.4
Gain, avg. (dBi)	18.6	19.3	20.0	19.7	20.6	17.3	17.3	17.2
Azimuth Beamwidth (°)	11.2	10.3	10.0	9.2	8.3	11.9	11.3	10.7
Azimuth Beam Spacing (°)	16							
Azimuth Beam Crossover (dB)	8	9	10	12	14	7	8	9
Elevation Beamwidth (°)	15.3	14.3	12.8	12.1	10.6	13.6	13.1	12.5
Electrical Downtilt (°)	6 FET (per each 4x4 beam cluster)							
First Upper Sidelobe Suppression (dB)	21	20	18	20	21	19	20	20
Front-to-Back Ratio, 180° (dB)	40	39	38	39	38	40		
Cross-Pol Discrimination @ Boresight (dB)	22	26	26	21	25	26		
VSWR / RL (dB)	1.31:1 / 17.5	1.33:1 / 17.0		1.27:1 / 18.5	1.40:1 / 15.5	1.5:1 / 14.0		
Port-to-Port Isolation, Intrabeam (dB)*	29		28		27	25		
Port-to-Port Isolation, Interbeam (dB)**	17.5	18.0	22.0	14.5	16.5	14.0		
PIM @ 2x43 dBm, dBc (max.)	-153					-145		
Max Power per Port (W)	100							
Polarization (°)	Dual slant 45 (±45)							
Impedance (Ω)	50							

\* Port-port isolation between each cluster of four ports in the same 4x4 MIMO beam

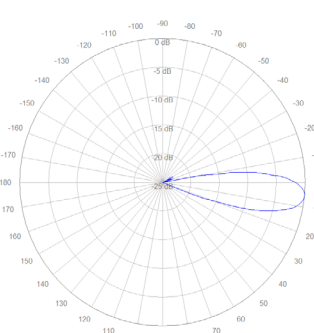
\*\* Port-port isolation between any combination of ports between different beams

RFD#: 7983 ; Revision: R1 ; Release Date: August 09, 2023;

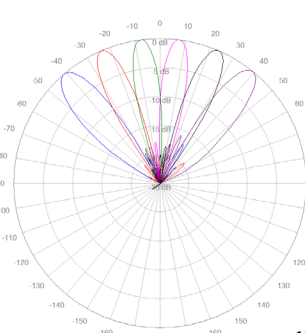
## 2D Antenna Patterns



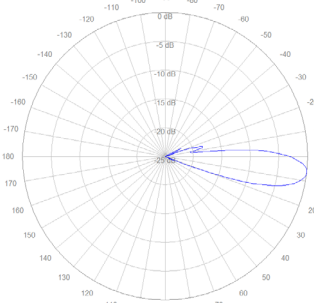
1900 MHz



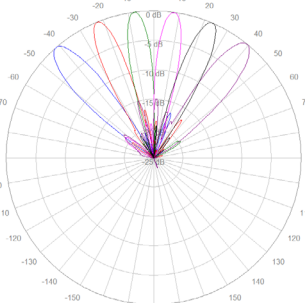
1980 MHz



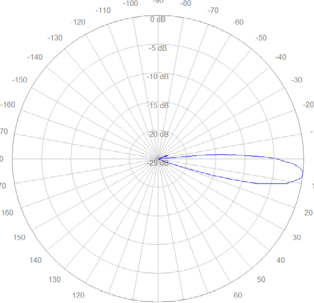
2110 MHz



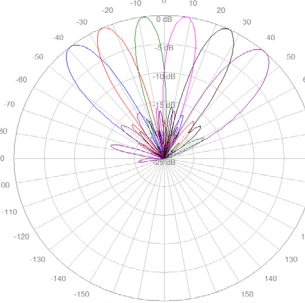
2360 MHz



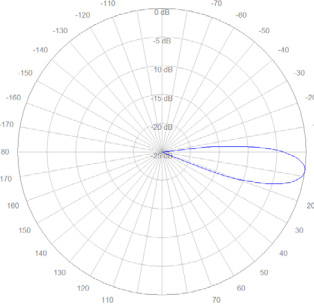
2570 MHz



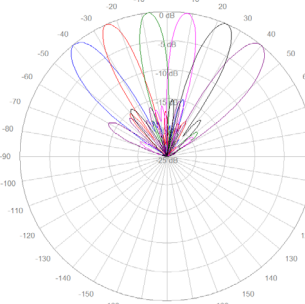
3400 MHz



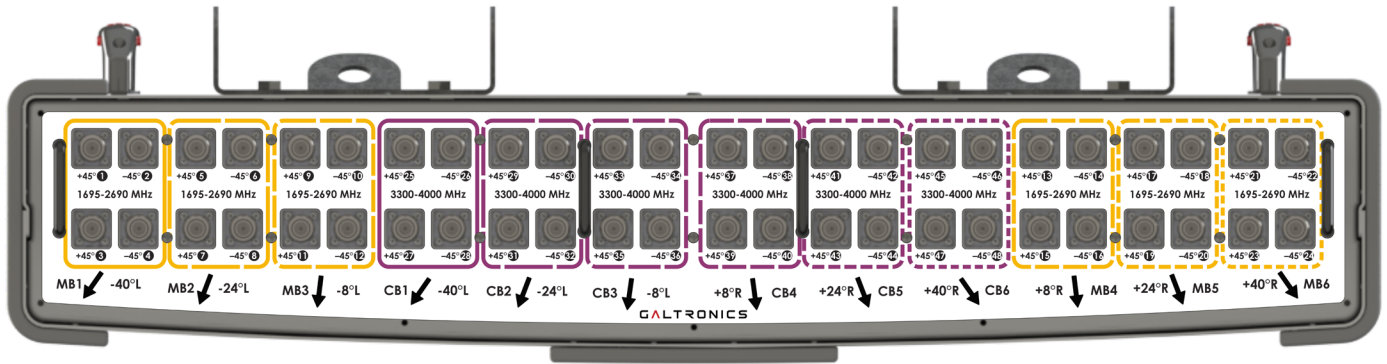
3690 MHz



3780 MHz



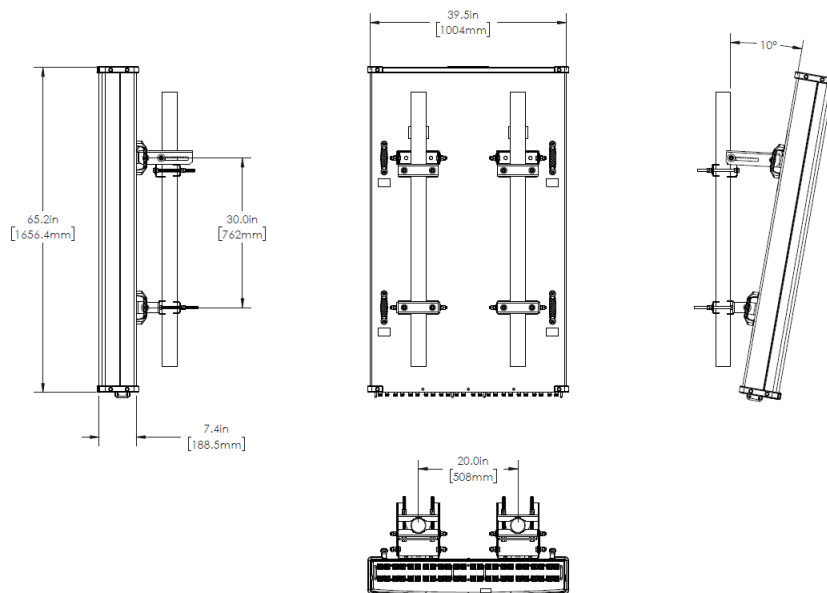
## Bottom Plate & Port Designation Details



## Port/Beam Designator Table

Frequency Range	Ports	Beam Assignment	AZ Beam Direction	Downtilt
1695-2690 MHz	1 - 4	MB1	-40° L	6° Fixed
1695-2690 MHz	5 - 8	MB2	-24° L	6° Fixed
1695-2690 MHz	9 - 12	MB3	-8° L	6° Fixed
1695-2690 MHz	13 - 16	MB4	+8° R	6° Fixed
1695-2690 MHz	17 - 20	MB5	+24° R	6° Fixed
1695-2690 MHz	21 - 24	MB6	+40° R	6° Fixed
3300-4000 MHz	25 - 28	CB1	-40° L	6° Fixed
3300-4000 MHz	29 - 32	CB2	-24° L	6° Fixed
3300-4000 MHz	33 - 36	CB3	-8° L	6° Fixed
3300-4000 MHz	37 - 40	CB4	+8° R	6° Fixed
3300-4000 MHz	41 - 44	CB5	+24° R	6° Fixed
3300-4000 MHz	45 - 48	CB6	+40° R	6° Fixed

## Antenna Outline



Copyright © 2023 – Galtronics Corporation Ltd.

Proprietary Information. All rights reserved. Galtronics reserves the right to modify or amend any antenna or specification without prior notice.

## Mechanical Specifications

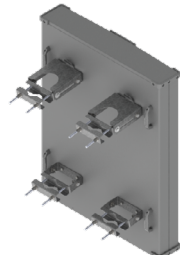
<b>Operating Temperature</b>	-40° to 158°F (-40° to +70°C)
<b>Antenna Weight</b>	111.3 lbs (50.5 kg)
<b>Antenna Bracket Weight</b>	13.4 lbs (6.1 kg), 2x Brackets Per Antenna
<b>Antenna Dimension (Height x Width x Depth)</b>	65.2" (1656.4 mm) x 39.5" (1004.0 mm) x 7.4" (188.5 mm)
<b>Input Connector Type</b>	48x 4.3/10 (F)
<b>Radome Material</b>	ASA w/Heavy Duty Top/Bottom Caps
<b>Radome Color</b>	Gray
<b>Environment Rating Outdoor</b>	Outdoor
<b>Wind Load, Front (@ 150 km/h)*</b>	2038.3 N / 458 lbf
<b>Wind Load, Side (@ 150 km/h)*</b>	471.3 N / 106 lbf
<b>Wind Load, Maximum (@ 150 km/h)*</b>	2161.9 N / 486 lbf
<b>Wind Survival Rating</b>	150 mph (241 km/h)

\* Wind load based on calculations according to TIA-222-H

## Part Numbers & Ordering Options

Description	Color	Mounting Kit	Part Number
4x4 MIMO 1695-2690 & 3300-4000 MHz 6/6 Beam Antenna with 48x 4.3-10 (F) Connectors and Heavy Duty Transport Case	Gray	Includes 2x MK-06989 mounting kit assemblies	GP6548-07983-212

## Mounting Brackets & Optional Accessories

Description:	Part Number:
<p><b>Heavy Duty Mounting Bracket (wind speed of 150 mph) [2x Included]</b></p> <p>The MK-6989 standard mounting bracket allows for easy installation of this Galtronics Multibeam Antenna. It provides 0°-10° of mechanical downtilt adjustability, and fits pole diameters ranging from 2.375" to 4.5".</p> <p><b>Note:</b> The MK-06989 mounting bracket can also be ordered separately.</p>	 <p>MK-06989</p>