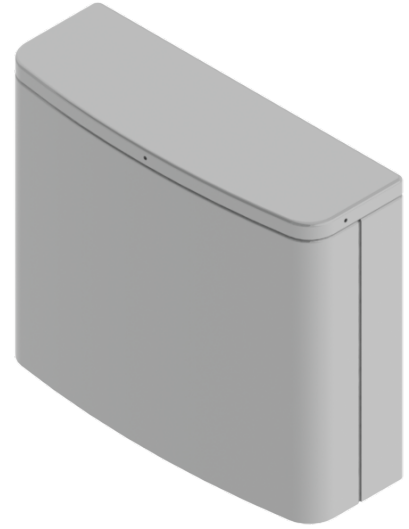


## C-Band 6-Beam 2x2 Antenna [3300-4000 MHz]

# GP1712-07984

### Description:

- 2x2 MIMO 6-beam antenna for high-capacity stadium/venue or special events applications
- 6-beams (12-ports) 3300-4000 MHz; each beam with 2x2 MIMO capability
- 6° Fixed Electrical Downtilt
- Patent pending technology allows for stable azimuth beam directions over the entire operating frequency band
- Excellent alternative to large lens-based multibeam antennas
- Optional heavy-duty transport case to prevent damage for multiple deployment scenarios



2x2 MIMO 3300-4000 MHz 6-Beam Antenna

### Electrical Specifications

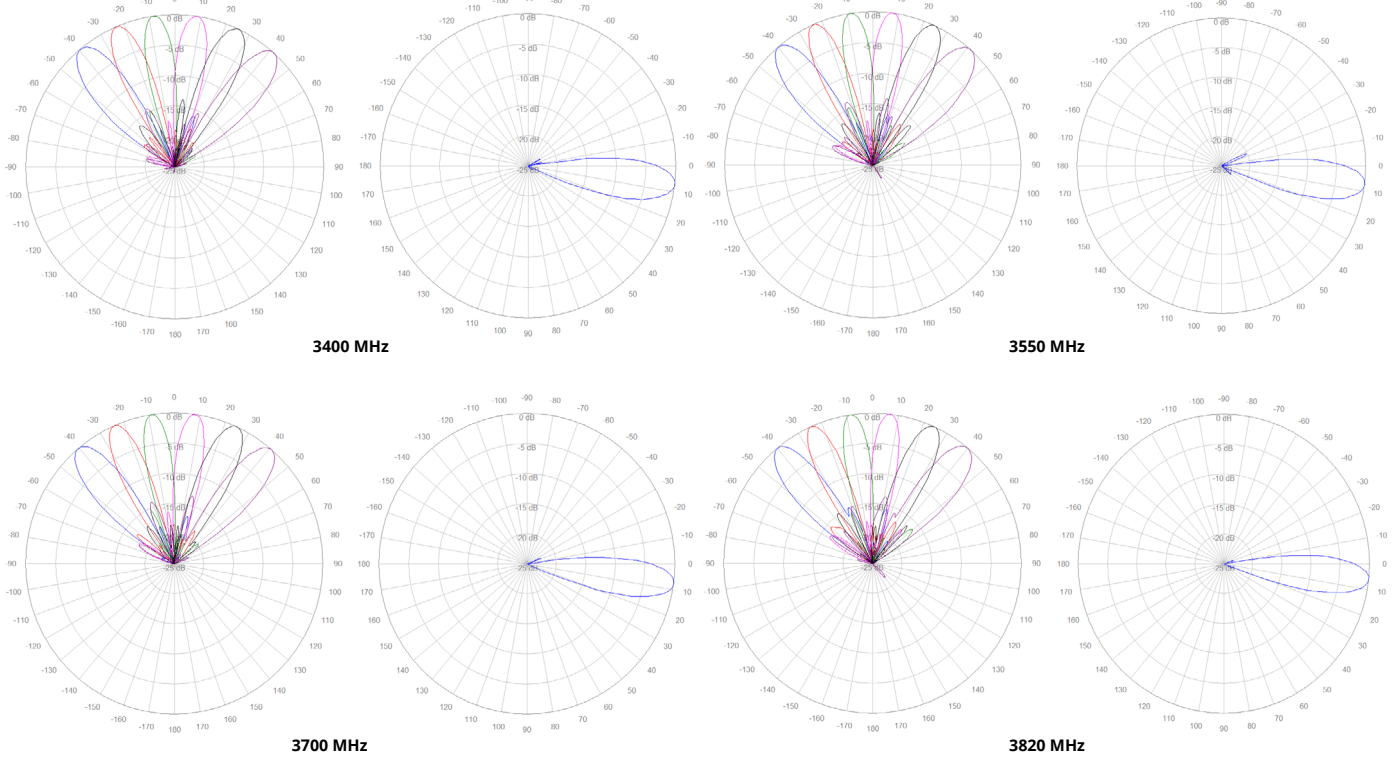
Frequency Band [MHz]	3300-3550	3550-3700	3700-4000
Gain, max. (dBi)	18.3	17.8	18.3
Gain, avg. (dBi)	17.3	17.2	17.2
Azimuth Beamwidth (°)	11.6	11.1	10.6
Azimuth Beam Spacing (°)	16		
Azimuth Beam Crossover (dB)	7.2	8.0	8.6
Elevation Beamwidth (°)	13.6	13.1	12.5
Electrical Downtilt (°)	6 FET (per each 2x2 beam cluster)		
First Upper Sidelobe Suppression (dB)	18	20	19
Front-to-Back Ratio, 180° (dB)	36	34	34
Cross-Pol Discrimination @ Boresight (dB)	25	26	24
VSWR / RL (dB)	1.50:1 / 14.0		
Port-to-Port Isolation, Intrabeam (dB)*	25		
Port-to-Port Isolation, Interbeam (dB)**	14.0		
PIM @ 2x43 dBm, (dBc)	-145		
Max Power per Port (W)	100		
Polarization (°)	Dual slant 45 (±45)		
Impedance (Ω)	50		

\* Port-port isolation between each cluster of two ports in the same 2x2 MIMO beam

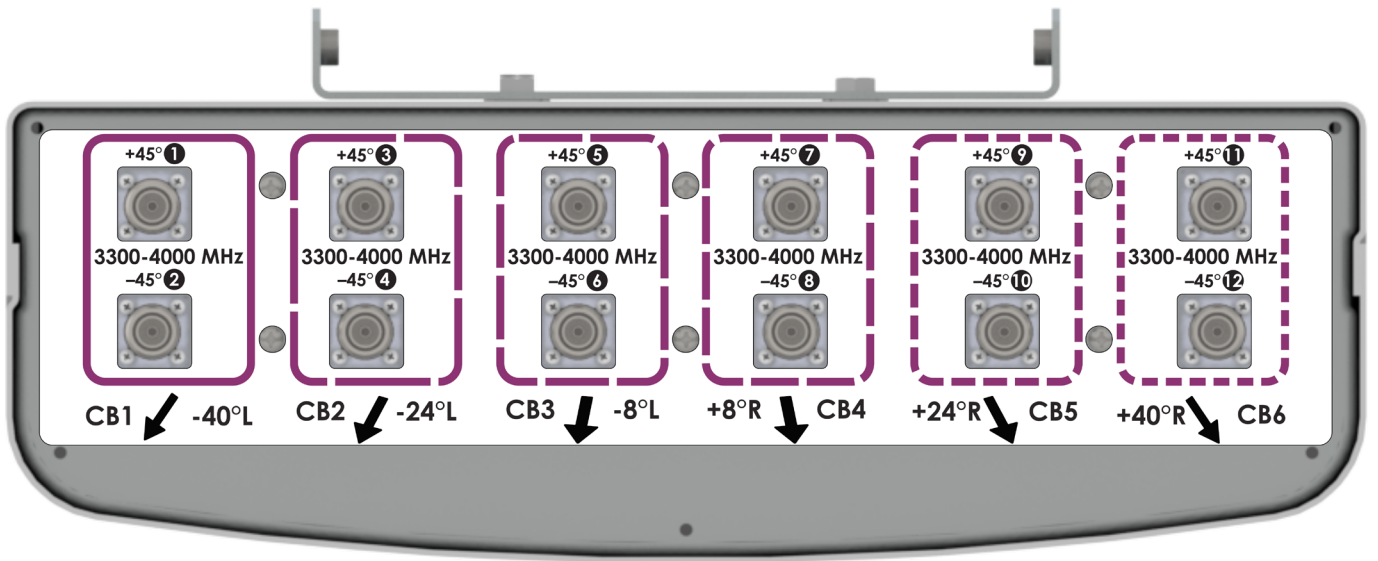
\*\* Port-port isolation between any combination of ports between different beams

RFD#: 7984 ; Revision: R1 ; Release Date: September 11, 2023;

## 2D Antenna Patterns



## Bottom Plate & Port Designation Details

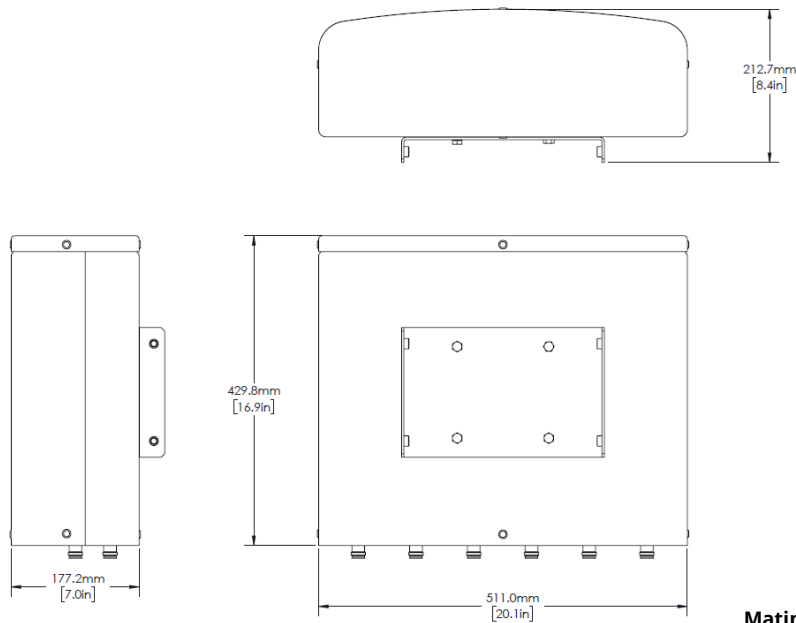


RFD#: 7984 ; Revision: R1 ; Release Date: September 11, 2023;

## Port/Beam Designator Table

Frequency Range	Ports	Beam Assignment	AZ Beam Direction	Downtilt
3300-4000 MHz	1 - 2	CB1	-40° L	6° Fixed
3300-4000 MHz	3 - 4	CB2	-24° L	6° Fixed
3300-4000 MHz	5 - 6	CB3	-8° L	6° Fixed
3300-4000 MHz	7 - 8	CB4	+8° R	6° Fixed
3300-4000 MHz	9 - 10	CB5	+24° R	6° Fixed
3300-4000 MHz	11 - 12	CB6	+40° R	6° Fixed

## Antenna Outline



**Mating Connector Torque:**  
4.3-10: 3.7 ft-lb ( 5 Nm)

## Mechanical Specifications

<b>Operating Temperature</b>	-40° to 158°F (-40° to +70°C)
<b>Antenna Weight</b>	23.6 lbs (10.7 kg)
<b>Antenna Dimension (Height x Width x Depth)</b>	16.9" (429.8 mm) x 20.1" (511.0 mm) x 7.0" (177.2 mm)
<b>Input Connector Type</b>	12x 4.3/10 (F)
<b>Radome Material</b>	ASA
<b>Radome Color</b>	Gray
<b>Environment Rating</b>	Outdoor
<b>Wind Load, Front (@ 150 km/h)*</b>	258.2 N / 58.0 lbf
<b>Wind Load, Side (@ 150 km/h)*</b>	92.8 N / 21.0 lbf
<b>Wind Load, Maximum (@ 150 km/h)*</b>	297.0 N / 67.0 lbf
<b>Wind Survival Rating</b>	150 mph (241 km/h)


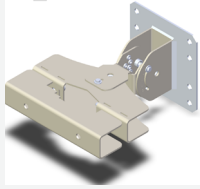

\* Wind load based on calculations according to TIA-222-H

RFD#: 7984 ; Revision: R1 ; Release Date: September 11, 2023;

## Part Numbers & Ordering Options

Description	Color	Mounting Kit	Part Number
2x2 MIMO 3300-4000 MHz 6-Beam Antenna, 6° FET with 12x 4.3-10 (F) Connectors	Gray	Includes MK-06853 Wall/Pol Mounting Bracket	GP1712-07984-112
2x2 MIMO 3300-4000 MHz 6-Beam Antenna, 6° FET with 12x 4.3-10 (F) Connectors and Heavy Duty Transport Case	Gray	Includes MK-06853 Wall/Pol Mounting Bracket	GP1712-07984-212

## Mounting Kit and Accessories Part Numbers

Description:	Part Number:
<p><b>Heavy Duty Mounting Bracket (150 mph) [INCLUDED]</b></p> <p>This steel mounting bracket is suitable for outdoor small cell antennas, and can be assembled onto wall and poles ranging from 1.5" to 4".</p>	 <p><b>MK-06853 (Included)</b></p>
<p><b>Heavy Duty Mounting Bracket (150 mph) [OPTIONAL]</b></p> <p>The mounting bracket allows wall and pole mounting with flexible and continuous antenna adjustment in the horizontal and vertical plane.</p>	 <p><b>62-45-09 (Sold Separately)</b></p>
<p><b>2 Axis Pole/Wall Mounting Bracket (150 mph) [OPTIONAL]</b></p> <p>Galtronics' mounting bracket offers an easy installation solution to mount Galtronics' stadium antennas to either a pole or a wall. When attaching the antenna to a wall please make sure to select appropriate fasteners (not included).</p>	 <p><b>62-28-09 (Sold Separately)</b></p>