

3-Beam 4x4 Multibeam Panel Antenna [1695-2690 MHz]

GP5112-07799

Description:

- 4x4 MIMO 3-Beam antenna for high-capacity stadium/venue or special events applications
- 3-Beam (12-port) 1695-2690 MHz; each beam with 4x4 MIMO capability
- 6° Fixed Electrical Downtilt in all bands
- Patent pending technology allows for stable azimuth beam directions over the entire operating frequency band
- Excellent alternative to large lens-based multibeam antennas



4x4 MIMO 1695-2690 MHz 3-Beam Panel Antenna

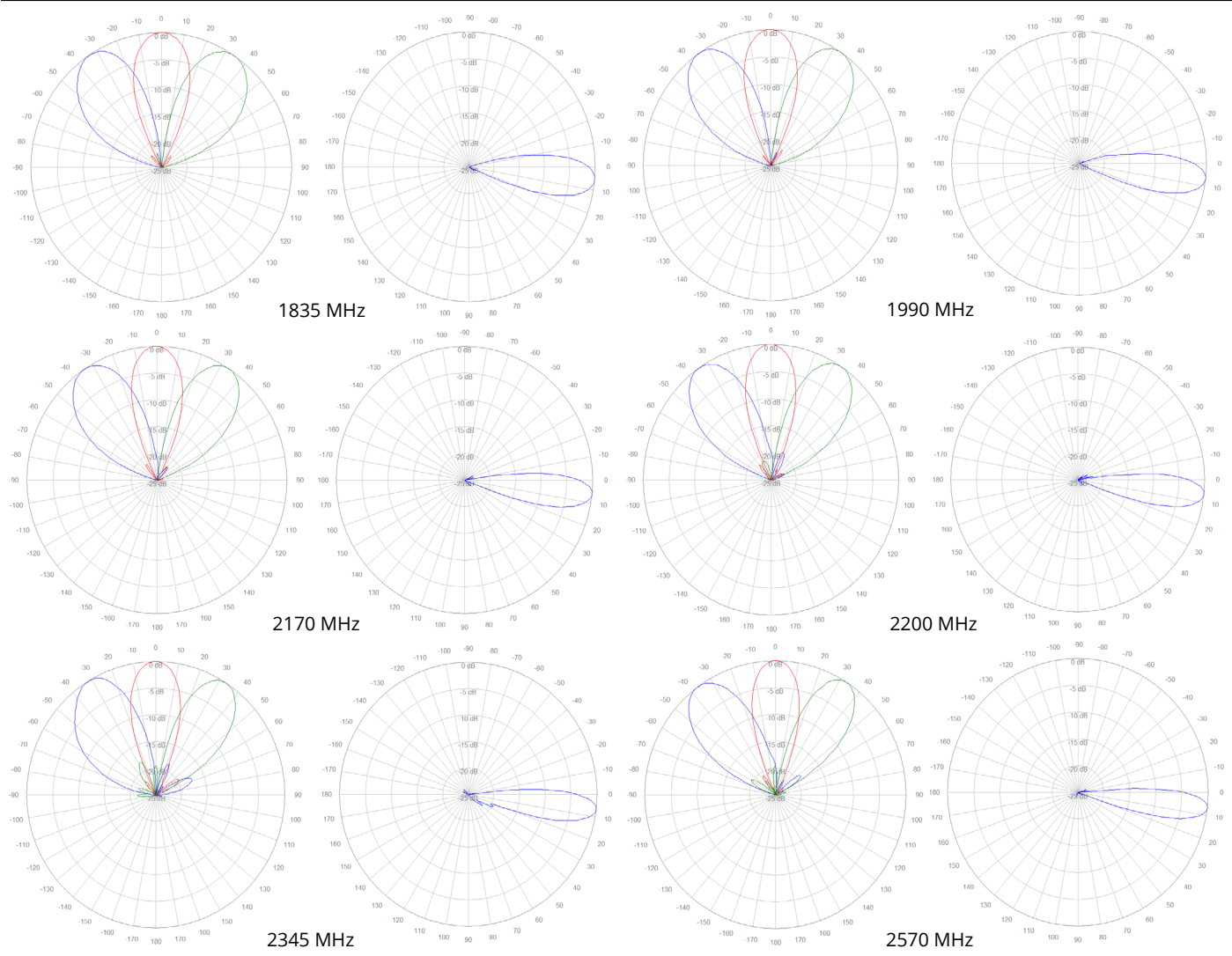
Electrical Specifications					
Frequency Band [MHz]	1695-1910	1930-2020	2110-2200	2305-2360	2496-2690
Gain, max. (dBi)	17.0	17.2	17.9	17.9	18.6
Gain, avg. (dBi)	15.8	16.3	17.0	16.7	17.6
Azimuth Beamwidth (°)	25.2	24.5	23.1	21.6	20.5
Azimuth Beam Spacing (°)	33				
Azimuth Beam Crossover (dB)	6.3	6.8	7.8	8.3	9.7
Elevation Beamwidth (°)	15.9	14.9	12.9	12.2	11.1
Electrical Downtilt (°)	6 FET (per each 4x4 beam cluster)				
First Upper Sidelobe Suppression (dB)	22	19	19	19	24
Front-to-Back Ratio, 180° (dB)	34				
Cross-Pol Discrimination @ Boresight (dB)	20				
VSWR / RL (dB)	1.5:1 / 14				
Port-to-Port Isolation, Intrabeam (dB)*	25				
Port-to-Port Isolation, Interbeam (dB)**	17.0	18.0	20.5	20	19.5
PIM @ 2x43 dBm, dBc (max.)	-153				
Max Power per Port (Watt)	100				
Polarization (°)	Dual slant 45 (±45)				
Impedance (Ω)	50				

* Port-port isolation between each cluster of four ports in the same 4x4 MIMO beam

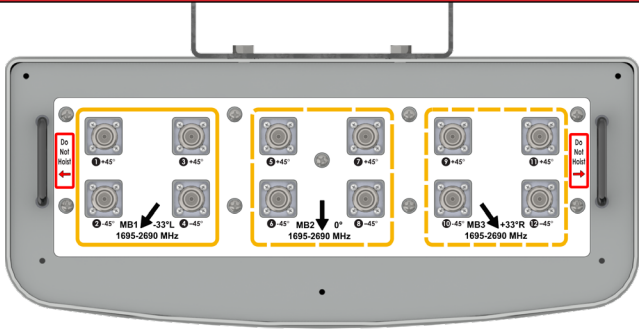
** Port-port isolation between any combination of ports between different beams

RFD#: 7799 ; Revision: R1 ; Release Date: July 21, 2023;

2D Antenna Patterns



Bottom Plate & Port Designation Details

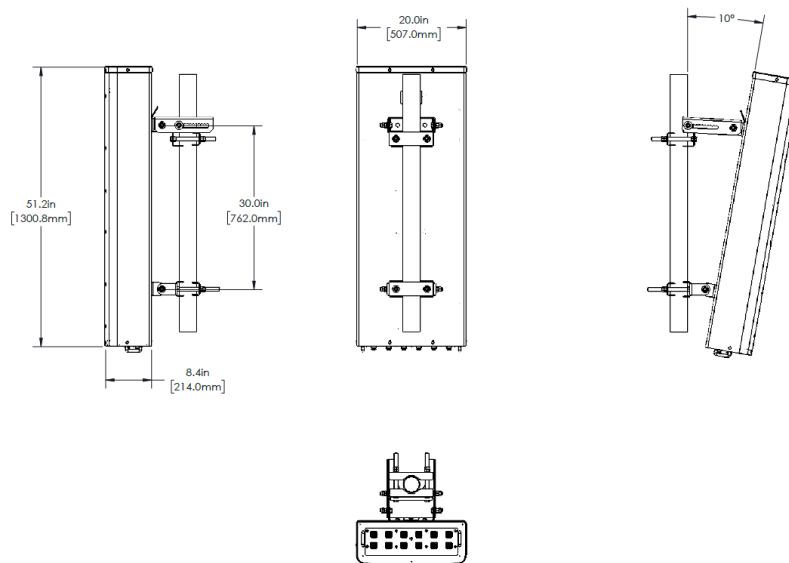


Mating Connector Torque:
4.3-10 44.3 in-lb (5 Nm)

Port/Beam Designator Table				
Frequency Range	Ports	Beam Assignment	AZ Beam Direction	Downtilt
1695-2690 MHz	1 - 4	MB1	-33° L	6° Fixed
1695-2690 MHz	5 - 8	MB2	0°	6° Fixed
1695-2690 MHz	9 - 12	MB3	+33° R	6° Fixed

RFD#: 7799 ; Revision: R1 ; Release Date: July 21, 2023;

Antenna Outline



Mechanical Specifications


Operating Temperature	-40° to 158°F (-40° to +70°C)
Antenna Weight	38.0 lbs (17.24 kg)
Antenna Bracket Weight	13.4 lbs (6.1 kg)
Antenna Dimension (Height x Width x Depth)	51.2" (1300.8 mm) x 20.0" (507.0 mm) x 8.4" (214.0 mm)
Input Connector Type	12x 4.3/10 (F)
Radome Material	ASA
Radome Color	Gray
Wind Load, Front (@ 150 km/h)*	688 N / 155 lbf
Wind Load, Side (@ 150 km/h)*	380 N / 86 lbf
Wind Load, Maximum (@ 150 km/h)*	914 N / 205 lbf
Wind Survival Rating	150 mph (241 km/h)

* Wind load based on calculations according to TIA-222-H

Part Numbers & Ordering Options

Description	Color	Mounting Kit	Part Number
4x4 MIMO 1695-2690 MHz 3-Beam Antenna with 12x 4.3-10 (F) Connectors	Gray	Includes MK-06989 mounting kit assemblies	GP5112-07799-112

Mounting Brackets & Optional Accessories

Description:	Part Number:
<p>Heavy Duty Mounting Bracket (wind speed of 150 mph) [Included]</p> <p>The MK-6989 standard mounting bracket allows for easy installation of any Galtronics Base Station Antenna to a macro tower structure. It provides 0°-10° of mechanical downtilt adjustability, and fits pole diameters ranging from 3" to 5".</p> <p>Note: The MK-06989 mounting bracket can also be ordered separately.</p>	 <p>MK-06989</p>