

15" 2-Port Low Band Directional Panel Antenna [617-896 MHz]

GP1502-07713

Description:

- Single-sector 2-Port MIMO antenna for Small Cell, Outdoor DAS and high-capacity stadium applications
- High Gain, dual-polarized design covering 600/700/850 bands
- 15° Fixed Tilt
- Includes Wall/Pole Mounting Bracket



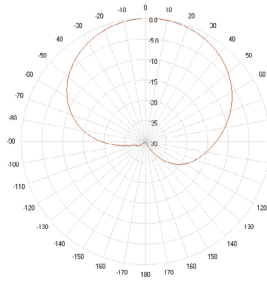
2-Port 617-896 MHz Directional Panel Antenna with Mounting Bracket

Electrical Specifications			
Frequency Band [MHz]	617-698	698-806	806-896
Input Connector Type	2x 4.3-10(F)		
Port-to-Port Isolation (min.)	20 dB		
VSWR (max.) / Return Loss (min.)	1.5:1 / 14.0 dB		
Impedance	50 Ω		
Polarization	Dual slant 45° (±45°)		
Horizontal Beamwidth	79°	77°	79°
Vertical Beamwidth	53°	51°	46°
Gain (max.)	9.2 dBi	10.1 dBi	9.9 dBi
Gain (avg.)	9.0 dBi	9.6 dBi	9.7 dBi
Front-to-Back Ratio, 180°	28 dB		
Downtilt	15° FET		
XPD @ Boresight	20 dB		
Max Power / Port	160 Watts		
PIM @ 2x43 dBm	<-153 dBc		

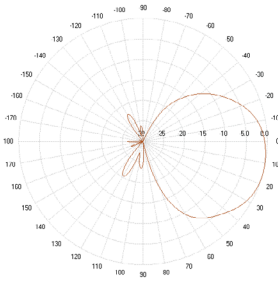
Mechanical Specifications	
Operating Temperature	-40° to 158°F (-40° to +70°C)
Antenna Weight	7.0 lbs (3.2 kg)
Antenna Dimension (Height x Width x Depth)	15.0" x 12.1" x 5.9" (381 mm x 308 mm x 149 mm)
Radome Material	ASA
RoHS	Compliant
Radome Color	Gray
Ingress Protection	Outdoor
Wind Survival Rating	150 mph (241 km/h)

RFD#: 7713 ; Revision: R1 ; Release Date: January 06, 2022

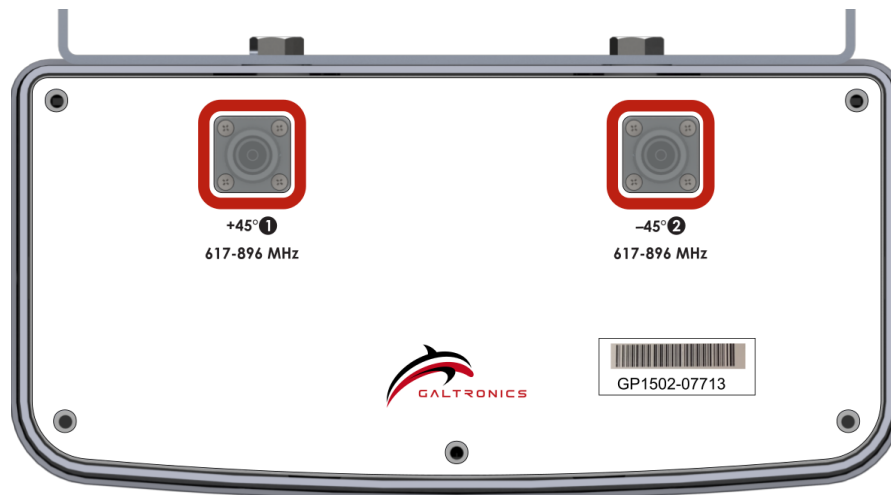
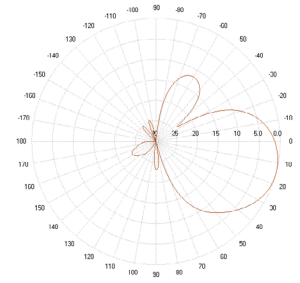
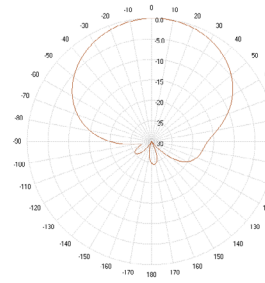
2D Antenna Patterns



625 MHz



860 MHz



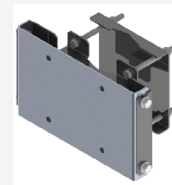
Part Numbers & Ordering Options

Description	Color	Mounting Kit	Part Number
2-Port 65° Directional Panel Antenna with 15° FET and 4.3-10(F) Connectors	Gray	Including MK-06853 Wall/Pole Mounting Kit	GP1502-07713-112

Mounting Brackets & Optional Accessories

[Included] Heavy Duty Mounting Bracket Wind speed of 150 mph

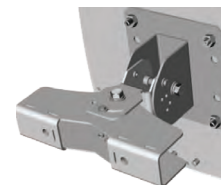
This standard mounting bracket offers an easy installation solution to mount the antenna to either a horizontal or a vertical pole.



MK-06853

[Optional] Heavy Duty Dual Axis Adjustable Mounting Bracket Wind speed of 150 mph

This optional mounting bracket offers an easy installation solution to mount the antenna to either a horizontal or a vertical pole.



62-45-09

Mating Connector Torque:

4.3-10: 3.7 ft-lb (5 Nm)