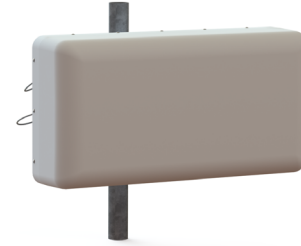


30°/60° 12-Port Directional Panel Antenna [617-896, 1695-2690, 3300-4200 and 5150-5925 MHz]

GP2712-B6367

Description:

- Single-sector 12-Port MIMO antenna for high capacity and stadium venues.
- 30°/60° beamwidth dual-polarized covering 600 MHz/LTE/CELL, AWS/PCS/WCS/BRS, CBRS/C-Band and LAA / U-NII Bands.
- 2x ports for 617-896 MHz
- 4x ports for 1695-2690 MHz
- 4x ports for 3300-4200 MHz
- 2x ports for 5150-5925 MHz*



617-896, 1695-2690, 3300-4200 and 5150-5925 MHz
12-Port Directional Panel Antenna

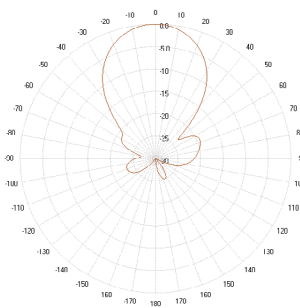
*Compliant to 789033 D02 General U-NII Test Procedures New Rules v01r04: The antenna meets current U-NII-1 requirements for gain and upper side-lobe performance. Guidelines for Compliance Testing of Unlicensed National Information Infrastructure (U-NII) Devices - Part 15, Sub-part E

Electrical Specifications										
Frequency Band [MHz]	617-698	698-806	806-896	1695-2200	2300-2400	2496-2690	3300-3550	3550-3700	3700-4200	5150-5925
Input Connector Type	2x 4.3-10(F)			4x 4.3-10(F)			4x 4.3-10(F)			2x 4.3-10(F)
Port-to-Port Isolation (min.)	20 dB									
VSWR (max.) /RL (min.)	1.5:1 / 14.0 dB									
Impedance	50 Ω									
Polarization	Dual slant 45° (±45°)									
Horizontal Beamwidth (°)	41	37	32	29	24	22	29	26	25	32
Vertical Beamwidth (°)	70	65	56	65	67	59	66	69	71	22
Gain, (dBi, max.)	10.9	11.6	11.9	12.5	12.5	12.6	12.2	12.2	12.6	5.5
Gain, (dBi, avg.)	10.2	11.0	11.6	11.8	11.6	11.7	11.6	11.7	11.9	4.6
Front-to-Back Ratio@180°	30 dB									
Max Power / Port	100 Watts			100 Watts			50 Watts			1 Watt
PIM @ 2x20W (max.)	-153 dBc						-145 dBc			N/A

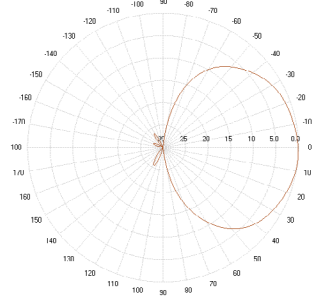
Mechanical Specifications	
Operating Temperature	-40° to 158°F (-40° to +70°C)
Antenna Weight	12 lbs (5.4kg)
Antenna Dimension (HxWxD)	13.9" (353.5 mm) x 27" (685.5 mm) x 7" (178.9 mm)
Radome Material	ASA
RoHS	Compliant
Radome Color	Gray
Ingress Protection	IP65
Wind Survival Rating	150 mph (241 km/h)

RFD#: B6367 ; Revision: R1 ; Release Date: March 28, 2022;

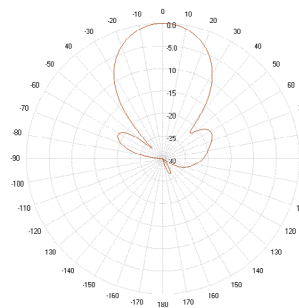
2D Antenna Patterns



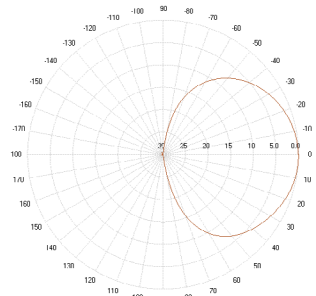
647 MHz



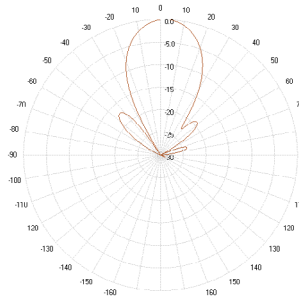
740 MHz



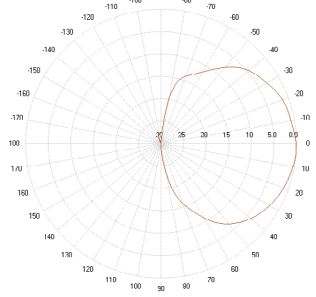
806 MHz



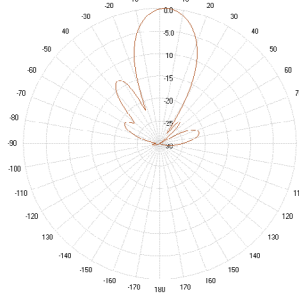
1995 MHz



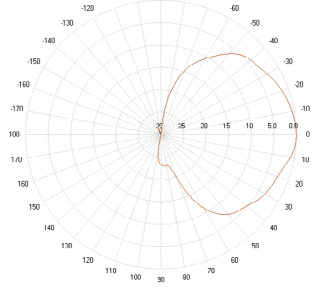
2120 MHz



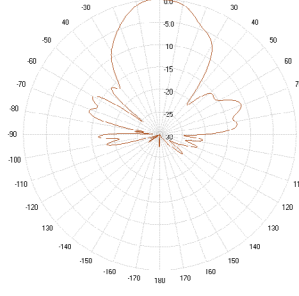
2400 MHz



2690 MHz

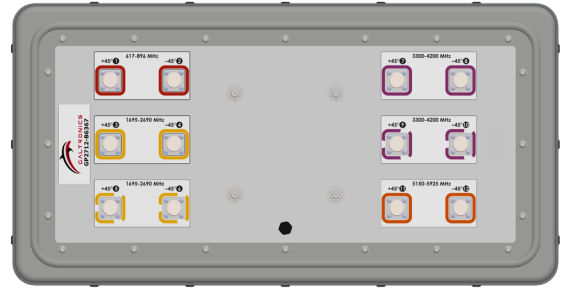
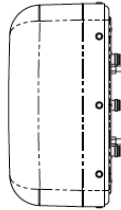
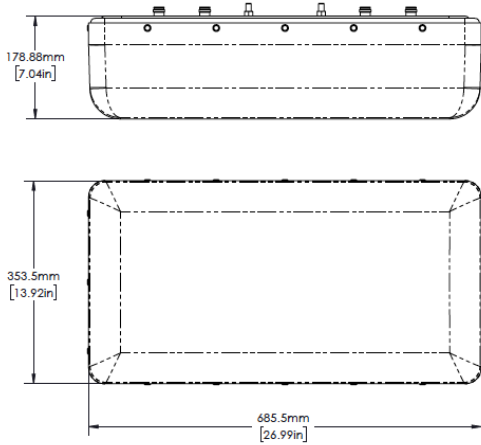


5925 MHz



RFD#: B6367 ; Revision: R1 ; Release Date: March 28, 2022;

Antenna Outline

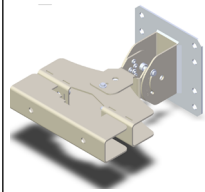




Mating Connector Torque:
4.3-10: 3.7 ft-lb (5 Nm)

Part Numbers & Ordering Options

Description	Color	Mounting Kit	Part Number
12-Port 30° x 60° Pattern Directional Panel Antenna with 4x 4.3-10 (F) Connectors	Gray	Includes 62-45-09 mounting kit	GP2712-B6367-112

Mounting Kit and Accessories Part Numbers

Description:	Part Number:
<p>Heavy Duty Mounting Bracket (150 mph) [INCLUDED]</p> <p>The mounting bracket allows wall and pole mounting with flexible and continuous antenna adjustment in the horizontal and vertical plane.</p>	 <p>62-45-09 (Included)</p>
<p>2 Axis Pole/Wall Mounting Bracket (150 mph) [OPTIONAL]</p> <p>Galtronics' mounting bracket offers an easy installation solution to mount Galtronics' stadium antennas to either a pole or a wall. When attaching the antenna to a wall please make sure to select appropriate fasteners (not included).</p>	 <p>62-28-09 (Sold Separately)</p>
<p>Heavy Duty Mounting Bracket (150 mph) [OPTIONAL]</p> <p>This standard mounting bracket offers an easy installation solution to mount the antenna to either a horizontal or a vertical pole.</p>	 <p>MK-07305 (Sold Separately)</p>

RFD#: B6367 ; Revision: R1 ; Release Date: March 28, 2022;