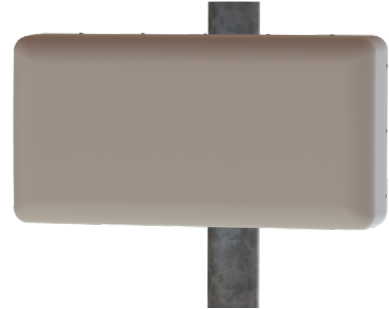


30°/60° 4-Port Directional Panel Antenna [617-896, 1695-2690 and 3300-4200 MHz]

GP2704-07749

Description:

- Single-sector 4-Port MIMO antenna for high capacity stadium venue applications
- 30°/60° beamwidth dual-polarized covering 600 MHz/LTE/CELL, AWS/PCS/WCS/BRS and C/CBRS Bands.
- 2x ports for 617-896, 1695-2690 and 3300-4200 MHz
- 2x ports for 3300-4200 MHz



617-896, 1695-2690 and 3300-4200 MHz
4-Port Directional Panel Antenna

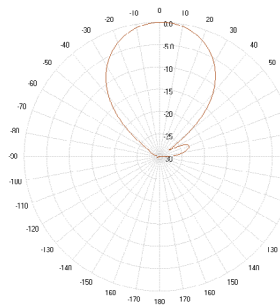
Electrical Specifications

Frequency Band [MHz]	617-698	698-806	806-896	1695-2200	2300-2400	2496-2690	3300-3550	3550-3700	3700-4200
Input Connector Type	2 x 4.3-10 (F)								
Port-to-Port Isolation (min.)	20 dB								
VSWR (max.) /RL (min.)	1.5:1 / 14.0 dB								
Impedance	50 Ω								
Polarization	Dual slant 45° (±45°)								
Horizontal Beamwidth (°)	41	36	33	29	23	22	27	25	23
Vertical Beamwidth (°)	65	62	57	64	63	49	60	63	61
Gain, (dBi, max.)	10.7	11.6	11.8	12.7	12.2	11.0	12.4	12.3	12.9
Gain, (dBi, avg.)	10.1	11.0	11.3	11.2	11.3	10.5	11.6	11.6	11.8
Front-to-Back Ratio@180°	30 dB								
Max Power / Port	100 Watts						100 Watts		
PIM @ 2x20W (max.)	-153 dBc						-145 dBc		

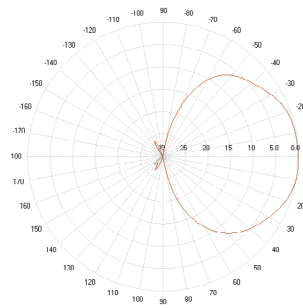
Mechanical Specifications

Operating Temperature	-40° to 158°F (-40° to +70°C)
Antenna Weight	10.5 lbs (4.76 kg)
Antenna Dimension (Height x Width x Depth)	13.9" (353.5 mm) x 27.0" (685.5 mm) x 7.0" (178.9 mm)
Radome Material	ASA
RoHS	Compliant
Radome Color	Gray
Ingress Protection	IP65
Wind Survival Rating	150 mph (241 km/h)

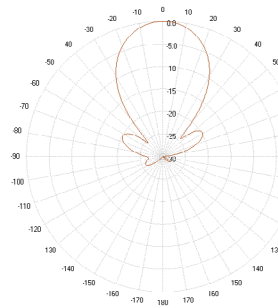
2D Antenna Patterns



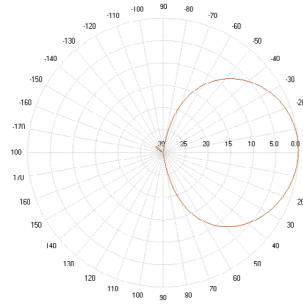
640 MHz



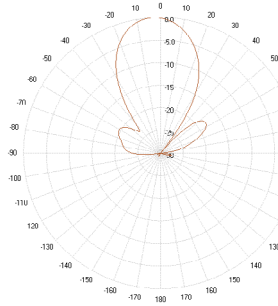
776 MHz



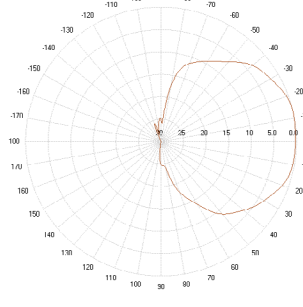
806 MHz



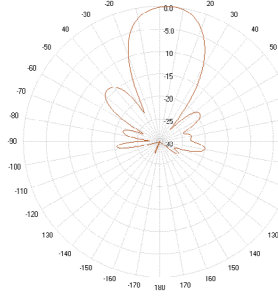
1865 MHz



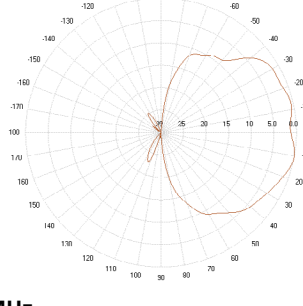
2315 MHz



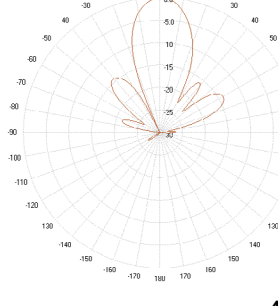
3450 MHz



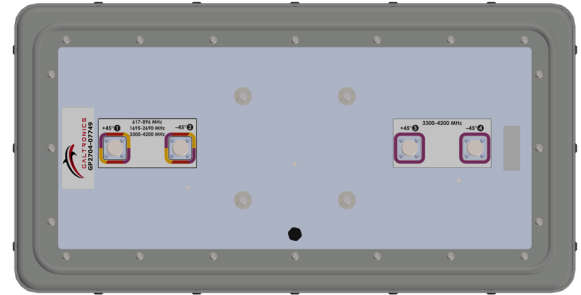
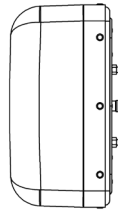
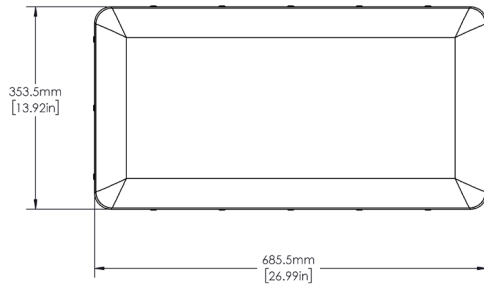
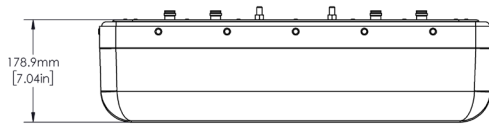
3550 MHz



4000 MHz



Antenna Outline and Back Panel Port Configuration/Labeling

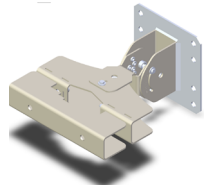




Mating Connector Torque:
4.3-10: 3.7 ft-lb (5 Nm)

Part Numbers & Ordering Options

Description	Color	Mounting Kit	Part Number
4-Port 30° x 60° Pattern Directional Panel Antenna with 4x 4.3-10 (F) Connectors	Gray	Includes 62-45-09 mounting kit	GP2704-07749-112

Mounting Kit and Accessories Part Numbers

Description:	Part Number:
Heavy Duty Mounting Bracket (150 mph) [INCLUDED] The mounting bracket allows wall and pole mounting with flexible and continuous antenna adjustment in the horizontal and vertical plane.	 62-45-09 (Included)
2 Axis Pole/Wall Mounting Bracket (150 mph) [OPTIONAL] Galtronics' mounting bracket offers an easy installation solution to mount Galtronics' stadium antennas to either a pole or a wall. When attaching the antenna to a wall please make sure to select appropriate fasteners (not included).	 62-28-09 (Sold Separately)
Heavy Duty Mounting Bracket (150 mph) [OPTIONAL] This standard mounting bracket offers an easy installation solution to mount the antenna to either a horizontal or a vertical pole.	 MK-07305 (Sold Separately)

RFD#: 7749 ; Revision: R1 ; Release Date: March 28, 2022;