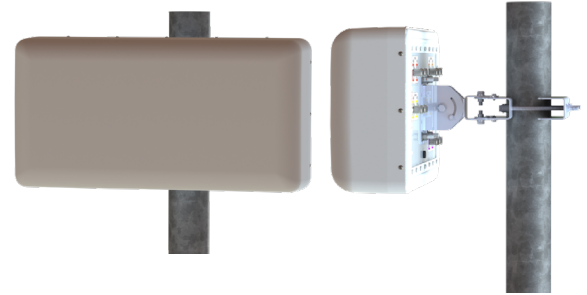


30°/60° 10-Port Directional Panel Antenna [617-896, 1695-2690, 3300-4200 and 5150-5925 MHz]

GP2710-B7061

Description:

- Single-sector 10-Port MIMO antenna for high capacity stadium/venue applications
- 30°/60° beam width dual-polarized covering 600 MHz/LTE/CELL, AWS/PCS/WCS/BRS, C-band and LAA / U-NII Bands
- Low and 2x Mid band ports are internally diplexed
- 2x ports for 617-896 and 1695-2690 MHz
- 2x ports for 1695-2690 MHz
- 4x ports for 3300-4200 MHz
- 2x ports for 5150-5925 MHz*



617-896, 1695-2690, 3300-4200 and 5150-5925 MHz
10-Port Directional Panel Antenna

*Compliant to 789033 D02 General U-NII Test Procedures New Rules v01r04: The antenna meets current U-NII-1 requirements for gain and upper side-lobe performance. Guidelines for Compliance Testing of Unlicensed National Information Infrastructure (U-NII) Devices - Part 15, Sub-part E

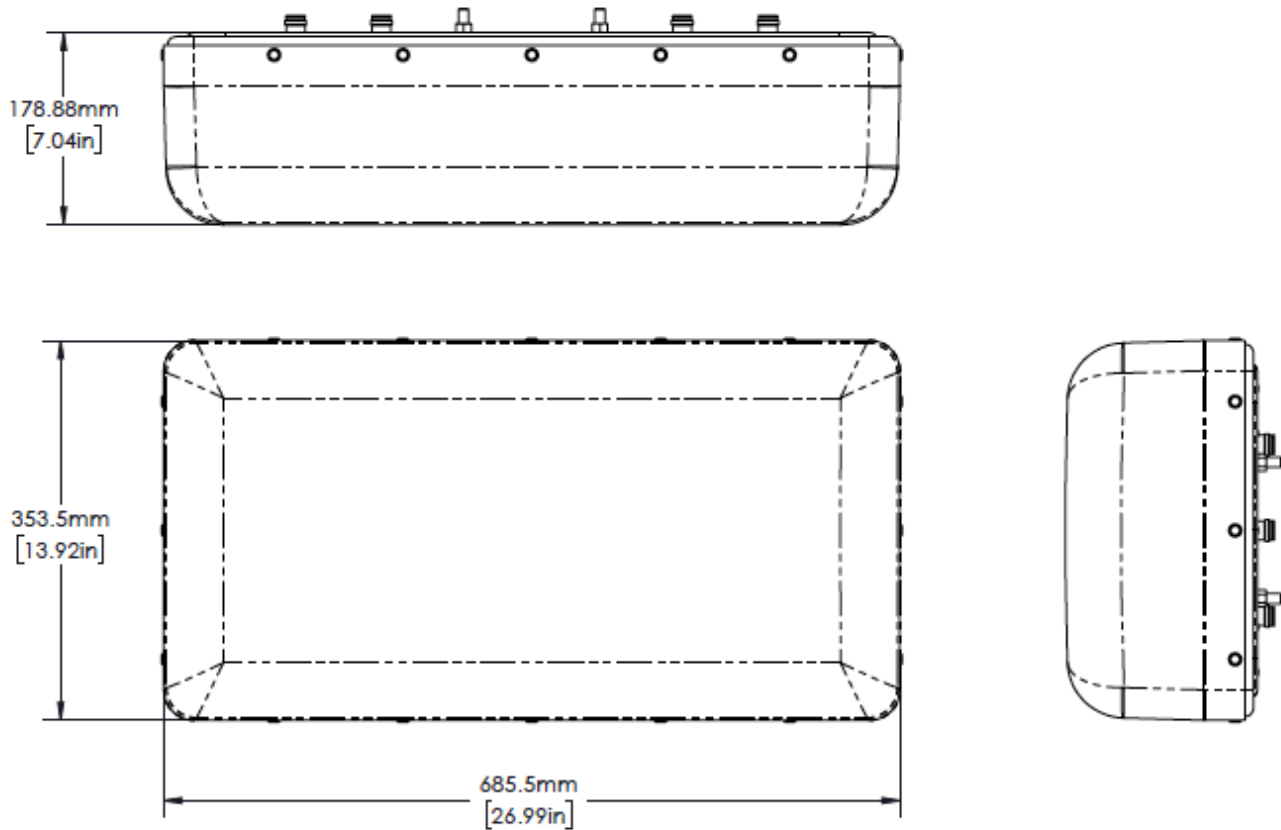
Electrical Specifications

Frequency Band [MHz]	617-698	698-806	806-896	1695-2200	2300-2400	2496-2690	3300-3550	3550-3700	3700-4200	5150-5925
Input Connector Type	2x 4.3-10(F)						4x 4.3-10(F)			2x 4.3-10(F)
				2x 4.3-10(F)						
Port-to-Port Isolation (min.)	20 dB									25 dB
VSWR (max.) /RL (min.)	1.5:1 / 14.0 dB									
Impedance	50 Ω									
Polarization	Dual slant 45° (±45°)									
Horizontal Beamwidth (°)	41	37	32	29.2	23.2	22.2	27.3	25.1	23.8	33
Vertical Beamwidth (°)	69	64	55	63	65	53	69	71	76	22
Gain (dBi, max.)	10.7	11.6	11.5	12.3	12.3	12.3	12.4	12.2	12.3	5.4
Gain (dBi, avg.)	10.0	10.8	11.2	11.3	11.3	11.2	11.8	11.9	11.6	4.9
FBR, 180° (dB, avg.)	>30 dB									
Max Power / Port	100 Watts						100 Watts			1 Watt*
PIM @ 2x 20W	<-153 dBc						<-145 dBc			N/A

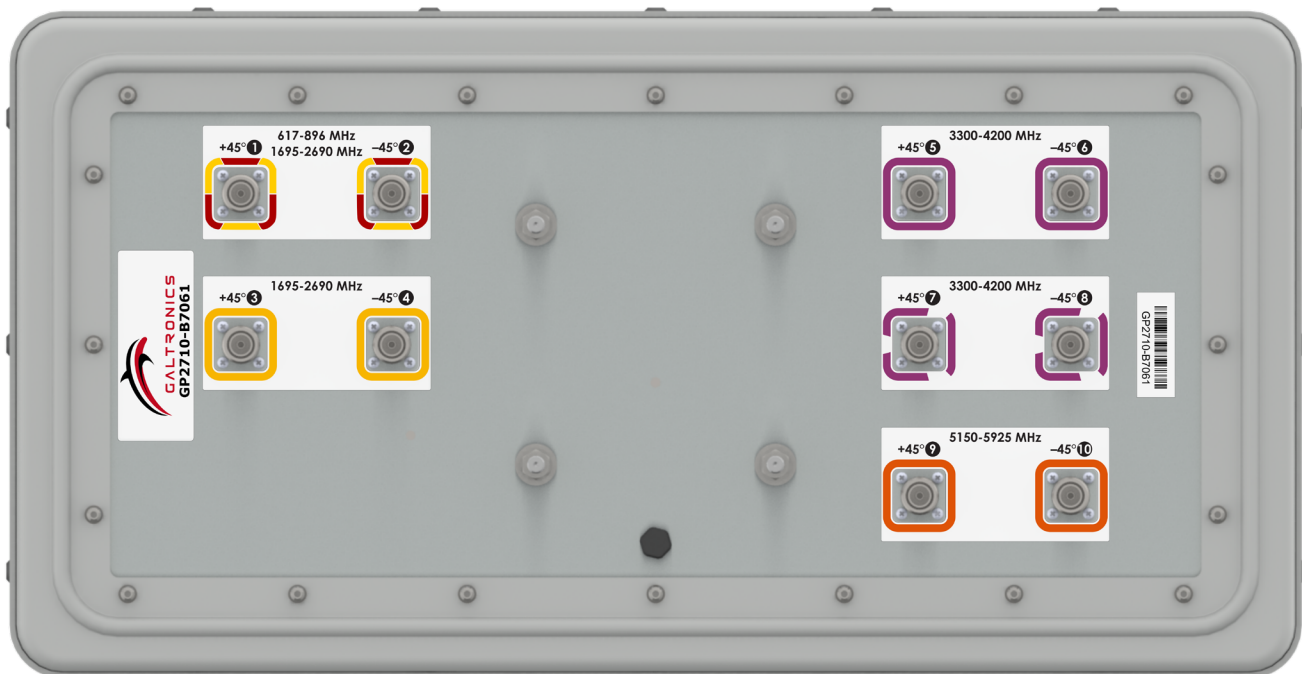
Mechanical Specifications

Operating Temperature	-40° to 158°F (-40° to +70°C)
Antenna Weight	12 lbs (5.5 kg)
Antenna Dimension (Height x Width x Depth)	13.9" (353.5 mm) x 27.0" (685.5 mm) x 7.0" (178.9 mm)
Radome Material	ASA
RoHS	Compliant
Radome Color	Gray
Ingress Protection	Outdoor (IP65)
Wind Survival Rating	150 mph (241 km/h)

Antenna Outline

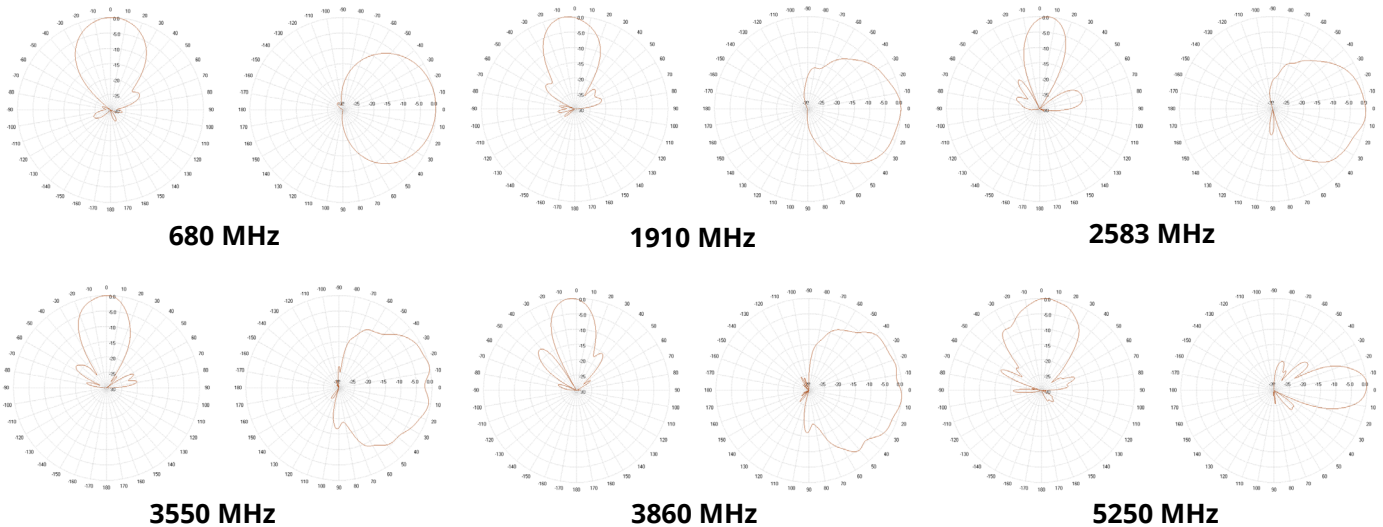


Back Panel Port Configuration/Labeling



RFD#: B7061 ; Revision: R1 ; Release Date: August 20, 2021;

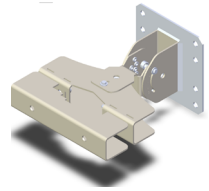


Antenna Patterns



Part Numbers & Ordering Options

Description	Color	Mounting Kit	Part Number
10-Port 30° x 60° Pattern Directional Panel Antenna with 10x 4.3-10 (F) Connectors	Gray	Includes 62-45-09 mounting kit	GP2710-B7061-1xx

Mounting Kit and Accessories Part Numbers

Description:	Part Number:
Heavy Duty Mounting Bracket (150 mph) [INCLUDED] The mounting bracket allows wall and pole mounting with flexible and continuous antenna adjustment in the horizontal and vertical plane.	 62-45-09 (Included)
2 Axis Pole/Wall Mounting Bracket (150 mph) [OPTIONAL] Galtronics' mounting bracket offers an easy installation solution to mount Galtronics' stadium antennas to either a pole or a wall. When attaching the antenna to a wall please make sure to select appropriate fasteners (not included).	 62-28-09 (Sold Separately)
Heavy Duty Mounting Bracket (150 mph) [OPTIONAL] This standard mounting bracket offers an easy installation solution to mount the antenna to either a horizontal or a vertical pole.	 MK-07305 (Sold Separately)

Mating Connector Torque:

4.3-10: 3.7 ft-lb (5 Nm)

RFD#: B7061 ; Revision: R1 ; Release Date: August 20, 2021;