

2' 18-Port 65° Directional Panel Antenna [698-896, 1695-2690, 3300-4200 and 5150-5925 MHz]

GP2418-07327

Description:

- Single-sector 18-Port MIMO antenna for for Small Cell, Stadium/ Venue and Outdoor DAS applications
- 65° beam width dual-polarized covering LTE700/CELL 850, AWS/PCS/ WCS/BRS, C-Band and LAA / U-NII Bands
- 4x ports for 698-896 MHz
- 8x ports for 1695-2690 MHz
- 4x ports for 3300-4200 MHz
- 2x ports for 5150-5925 MHz*
- Includes wall/pole mounting bracket



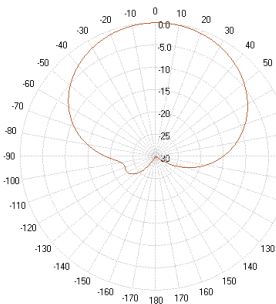
698-896, 1695-2690, 3300-4200 and 5150-5925 MHz
18-Port 65° Directional Panel Antenna

*Compliant to 789033 D02 General U-NII Test Procedures New Rules v01r04: The antenna meets current U-NII-1 requirements for gain and upper side-lobe performance. Guidelines for Compliance Testing of Unlicensed National Information

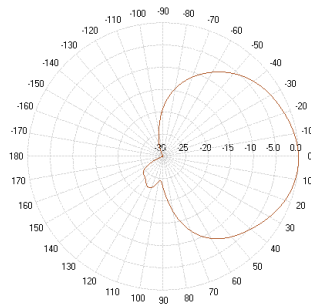
Electrical Specifications								
Frequency Band [MHz]	698-896	1695-2200	2305-2360	2496-2690	3300-3550	3550-3700	3700-4200	5150-5925
Input Connector Type	4x 4.3-10(F)	8x 4.3-10(F)			4x 4.3-10(F)		2x 4.3-10(F)	
Isolation (min.)	20 dB				21 dB		22 dB	
VSWR (max.) /RL (min.)	1.5:1 / 14.0 dB							
Impedance	50 Ω							
Polarization	Dual slant 45° (±45°)							
Horizontal Beamwidth	78°	73°	71°	77°	58°	66°	73°	63°
Vertical Beamwidth	77°	29.0°	24.5°	21.0°	25.8°	26.2°	25.0°	21.8°
Gain (max.)	8.3 dBi	12.1 dBi	12.3 dBi	12.6 dBi	12.8 dBi	12.6 dBi	12.5 dBi	5.5 dBi
Gain (avg.)	7.8 dBi	10.9 dBi	11.6 dBi	11.8 dBi	12.4 dBi	12.2 dBi	11.7 dBi	4.9 dBi
First Upper SLL (Co-Pol, avg.)	N/A	18.1 dB	18.0 dB	16.4 dB	21.0 dB	21.0 dB	18.9 dB	16.2 dB
Front-to-Back Ratio, 180° (avg.)	33 dB	35 dB	35 dB	37 dB	41 dB	40 dB	40 dB	28 dB
Downtilt	0° Fixed							
Max Power / Port	100 Watts				100 Watts		1 Watt	
PIM @ 2x43 dBm	<-153 dBc				<-145 dBc		N/A	

Mechanical Specifications	
Operating Temperature	-40° to 158°F (-40° to +70°C)
Antenna Weight	17.5 lbs (7.95 kg)
Antenna Dimensions (Height x Width x Depth)	23.9" x 15.0" x 7.2" (608.3 mm x 380 mm x 184 mm)
Radome Material	ASA
RoHS	Compliant
Radome Color	Gray
Environmental Rating	Outdoor
Wind Survival Rating	150 mph (241 km/h)

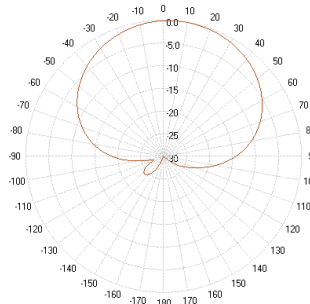
2D Antenna Patterns



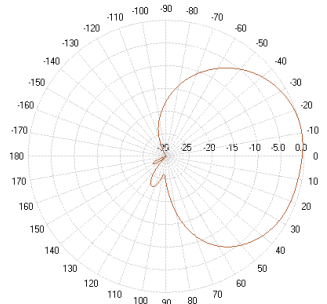
750 MHz



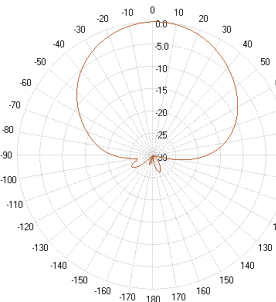
894 MHz



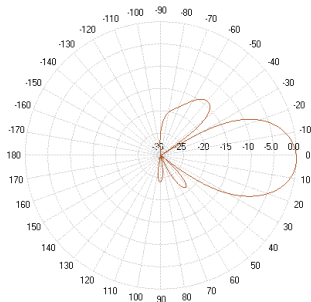
1710 MHz



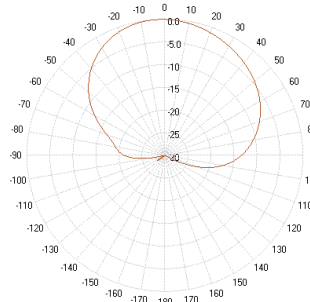
1960 MHz



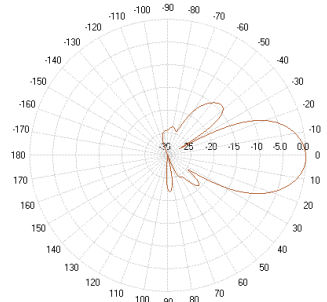
2570 MHz



3600 MHz



3900 MHz



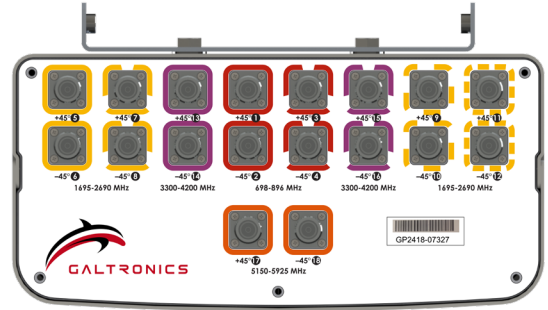
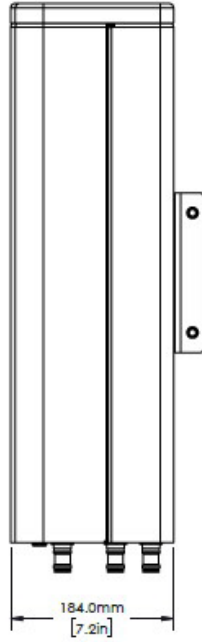
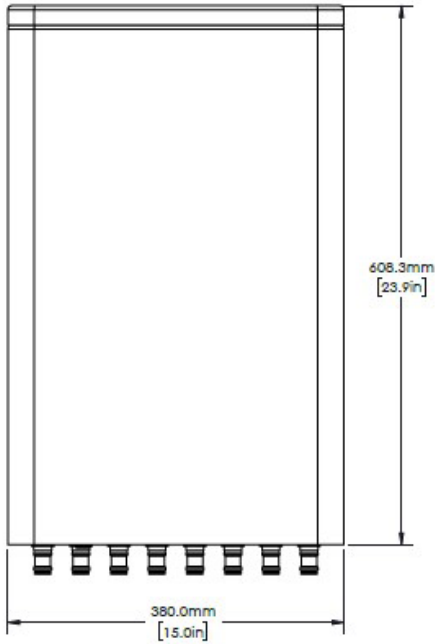
5200 MHz



GALTRONICS

A Baylin Technologies Company

Mechanical Outline & Bottom Plate Labels



Mating Connector Torque:
4.3-10: 3.7 ft-lb (5 Nm)

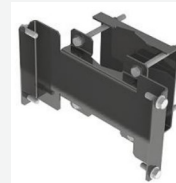
Part Numbers & Ordering Options

Description	Color	Mounting Kit	Part Number
18-Port 65° Directional Panel Antenna w/18x 4.3-10(F) Connectors	Gray	Including MK-06853 Wall/Pole Mounting Kit	GP2418-07327-1xx

Mounting Brackets & Optional Accessories

[Included] Heavy Duty Mounting Bracket
Wind speed of 150 mph

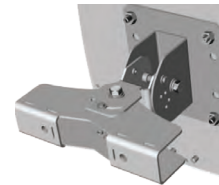
This standard mounting bracket offers an easy installation solution to mount the antenna to either a horizontal or a vertical pole.



MK-06853

[Optional] Heavy Duty Dual Axis Adjustable Mounting Bracket
Wind speed of 150 mph

This optional mounting bracket offers an easy installation solution to mount the antenna to either a horizontal or a vertical pole.



62-45-09

RFD# 7327 ; Revision: R1 ; Release Date: July 09, 2021 ;