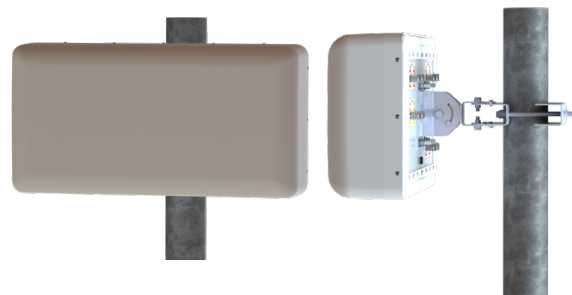


## 30°/60° 10-Port Directional Panel Antenna [617-896, 1695-2690, 3400-3800 and 5150-5925 MHz]

# GP2710-07061

### Description:

- Single-sector 10-Port MIMO antenna for high capacity and stadium venues.
- 30°/60° beam width dual-polarized covering 600 MHz/LTE/CELL, AWS/PCS/WCS/BRS, CBRS and LAA / U-NII Bands.
- Low and 2x Mid band ports are internally diplexed.
- 2x ports for 617-896 and 1695-2690 MHz
- 2x ports for 1695-2690 MHz
- 4x ports for 3400-3800 MHz
- 2x ports for 5150-5925 MHz\*



617-896, 1695-2690, 3400-3800 and 5150-5925 MHz  
10-Port Directional Panel Antenna

\*Compliant to 789033 D02 General U-NII Test Procedures New Rules v01r04: The antenna meets current U-NII-1 requirements for gain and upper side-lobe performance. Guidelines for Compliance Testing of Unlicensed National Information Infrastructure (U-NII) Devices - Part 15, Sub-part E

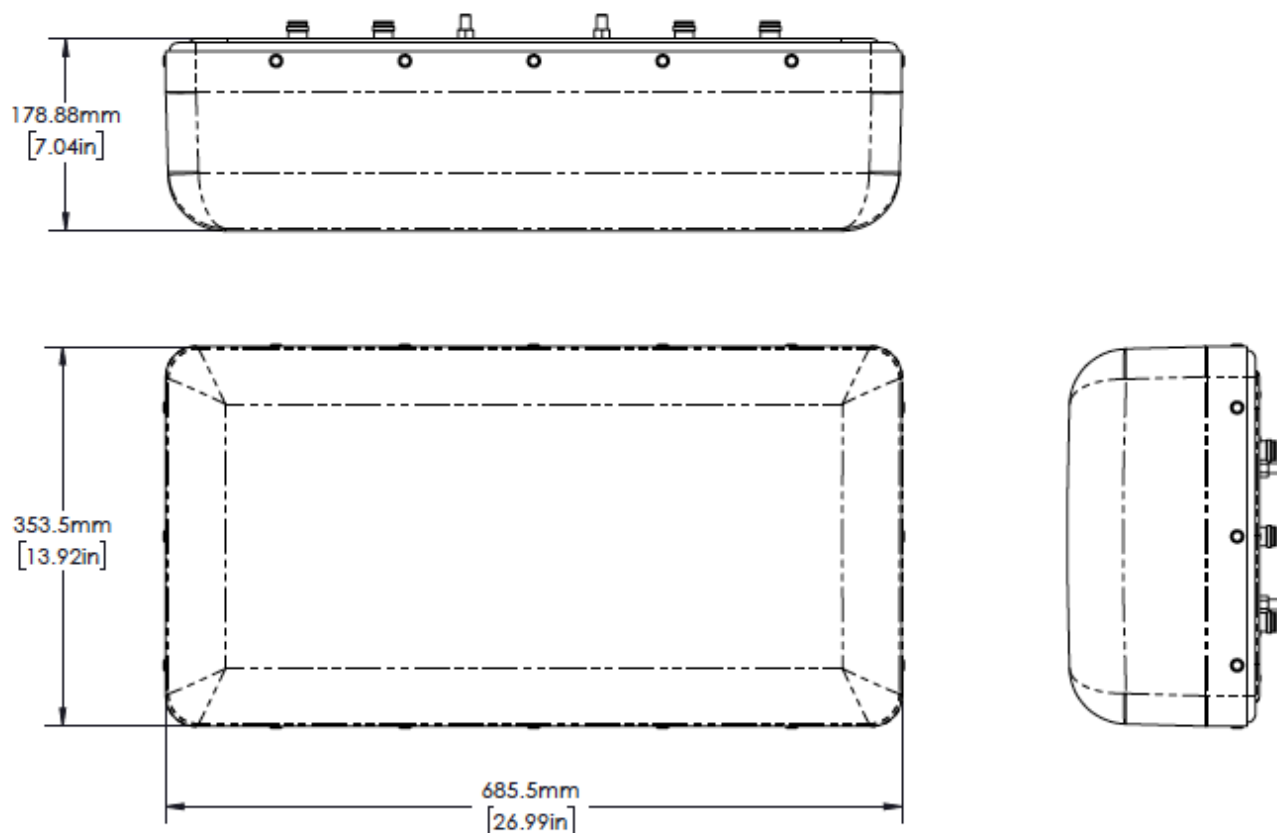
### Electrical Specifications

Frequency Band [MHz]	617-698	698-806	806-896	1695-2180	2300-2400	2496-2690	3400-3800	5150-5925
Input Connector Type	2x 4.3-10(F)						4x 4.3-10(F)	2x 4.3-10(F)
				2x 4.3-10(F)				
Port-to-Port Isolation (min.)	20 dB							
VSWR (max.) /RL (min.)	1.5:1 / 14.0 dB							
Impedance	50 Ω							
Polarization	Dual slant 45° (±45°)							
Horizontal Beamwidth	41°	37°	32°	31°	25°	23°	28°	35°
Vertical Beamwidth	66°	64°	59°	64°	67°	57°	70°	22°
Gain (max.)	10.5 dBi	11.2 dBi	11.4 dBi	12.7 dBi	12.2 dBi	12.7 dBi	12.8 dBi	5.5 dBi
Gain (avg.)	10.0 dBi	10.5 dBi	11.1 dBi	11.3 dBi	11.3 dBi	11.3 dBi	11.8 dBi	4.9 dBi
Front-to-Back Ratio, 180°	>30 dB							
Max Power / Port	100 Watts						50 Watts	1 Watt*
PIM @ 2x 20W	N/A	<-153 dBc					N/A	N/A

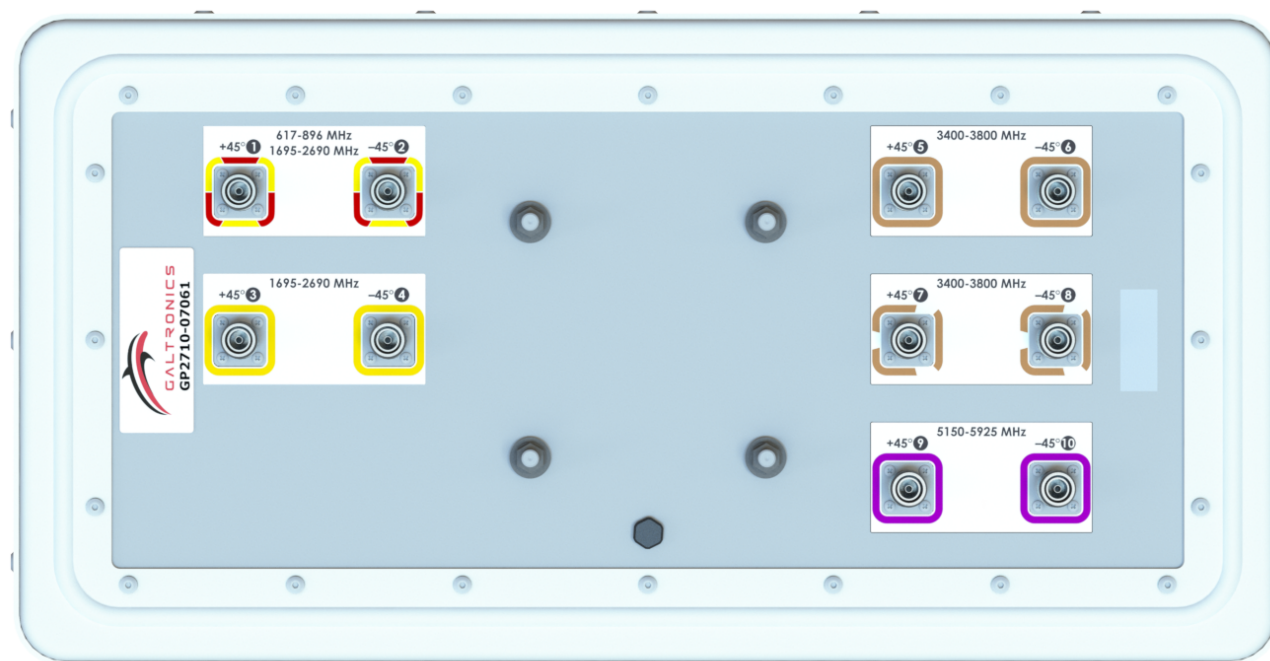
### Mechanical Specifications

Operating Temperature	-40° to 158°F (-40° to +70°C)
Antenna Weight	12 lbs (5.5 kg)
Antenna Dimension (Height x Width x Depth)	13.9" (353.5 mm) x 27.0" (685.5 mm) x 7.0" (178.9 mm)
Radome Material	ASA
RoHS	Compliant
Radome Color	Gray
Ingress Protection	Outdoor (IP65)
Wind Survival Rating	150 mph (241 km/h)

## Antenna Outline

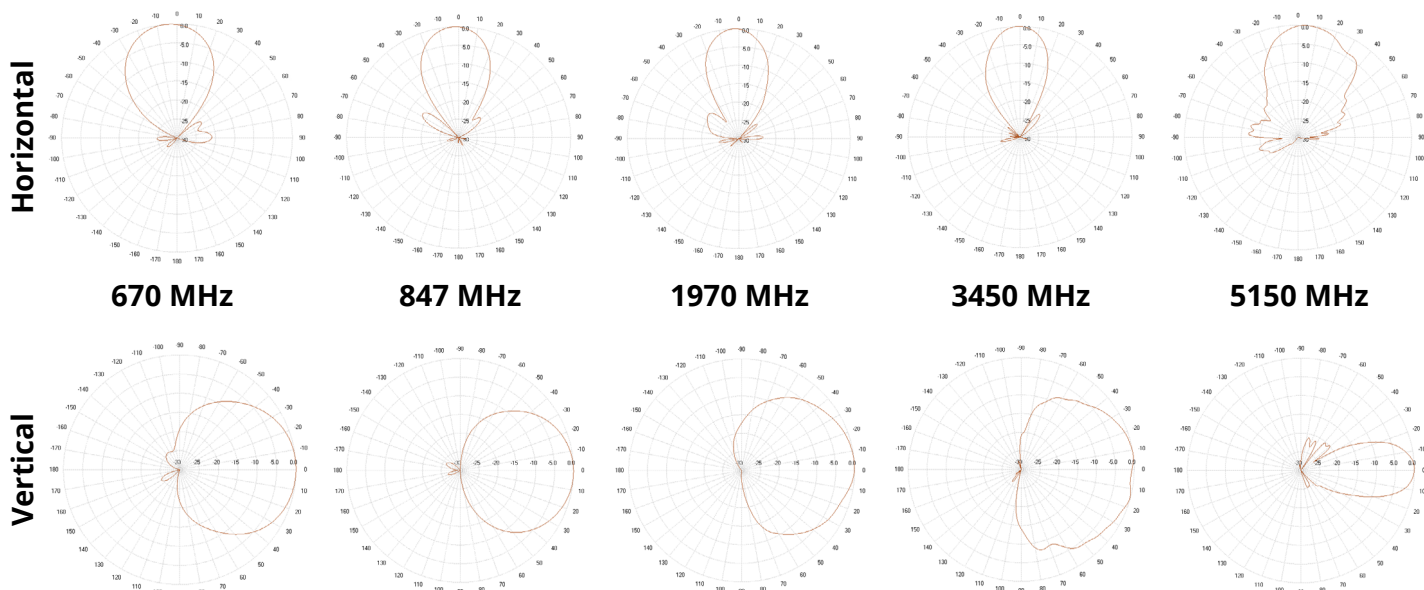


## Back Panel Port Configuration/Labeling

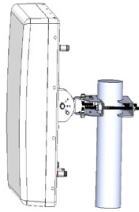


RFD#: 07061 ; Revision: R3 ; Release Date: August 17, 2020;

## Antenna Patterns



## Part Numbers, Ordering Options and Accessories

Description	Part Number:
<b>Antenna with 10x 4.3-10(F) Connectors, Gray (Does Not Include Mounting Bracket - Order Separately)</b>	GP2710-07061-111
<b>Optional Items &amp; Accessories:</b>	
<b>Heavy Duty Mounting Bracket (wind speed of 150 mph)</b>  This recommended mounting bracket offers an easy installation solution to mount the antenna to either a horizontal or a vertical pole.	 <p>62-45-09</p>

**Mating Connector Torque:**  
4.3-10: 3.7 ft-lb ( 5 Nm)