

## 2' 8-Port Dual-Band 65° Base Station Antenna [698-896 and 1695-2690 MHz]

# GP2408-B6789

### Description:

- Single-sector 8-Port MIMO antenna for Base Station, Small Cell and Outdoor DAS applications
- 65° beam width dual-polarized covering 700 MHz/LTE/CELL and AWS/PCS/WCS/BRS Bands
- 4x ports for Low Band 698-896 MHz
- 4x ports for Mid Band 1695-2690 MHz with 2-12° Manual Electrical Tilt (MET)



8-Port 698-896 and 1695-2690 MHz  
Dual-Band Directional Panel Antenna

### Electrical Specifications

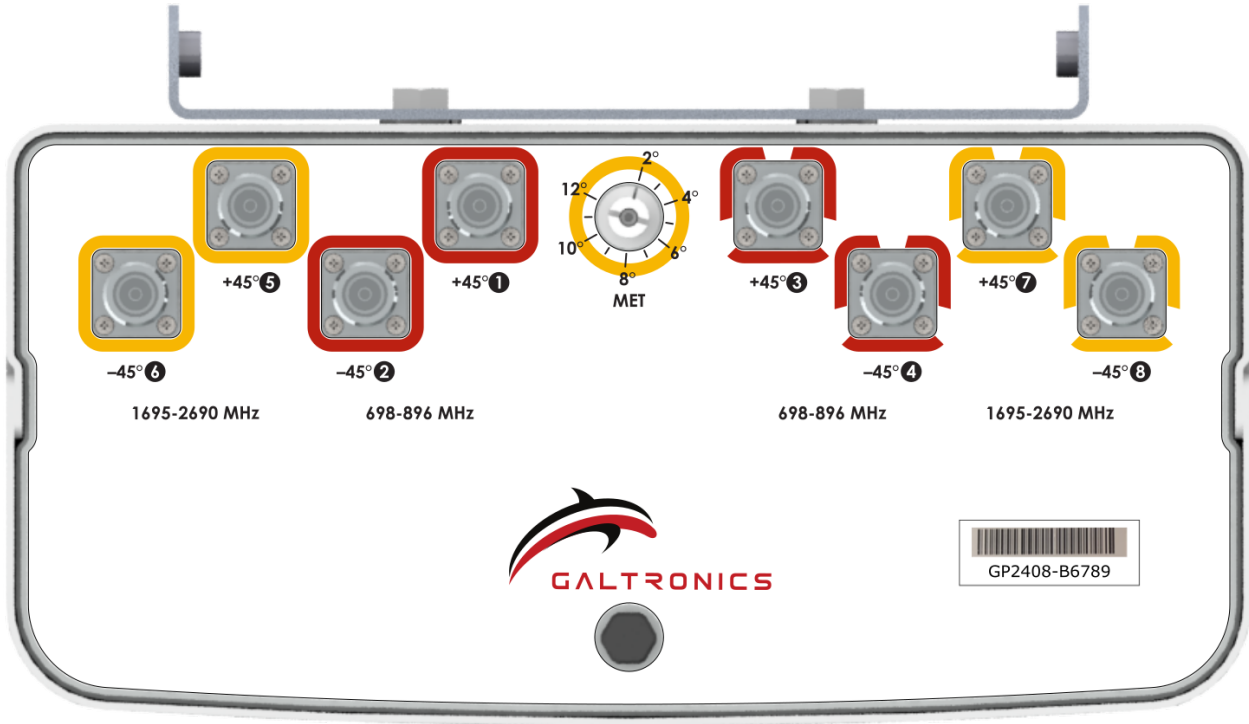
Frequency Band [MHz]	698-806	806-896	1695-2180	2300-2400	2496-2690
Input Connector Type	4x 4.3-10(F)		4x 4.3-10(F)		
Polarization	Dual slant 45° (± 45°)				
Horizontal Beamwidth	71°	65°	66°	67°	62°
Vertical Beamwidth	72.0°	60.1°	15.1°	11.6°	10.7°
Electrical Tilt	0° Fixed		2° - 12° MET		
Gain (max.)	8.8 dBi	9.3 dBi	14.2 dBi	14.8 dBi	15.6 dBi
Gain (avg.)	8.1 dBi	8.7 dBi	13.2 dBi	13.9 dBi	14.2 dBi
Front-to-Back Ratio, 180°	30 dB	30 dB	28 dB	28 dB	25 dB
XPOL Discrimination @ 0°	20 dB	20 dB	20 dB	20 dB	25 dB
VSWR (max.) / RL (min.)	1.5:1 / 14.0 dB				
Port-to-Port Isolation (min.)	20 dB				
PIM @ 2x43 dBm	<-153 dBc				
Max Power / Port	100 Watts		100 Watts		
Impedance	50 Ω				

### Mechanical Specifications

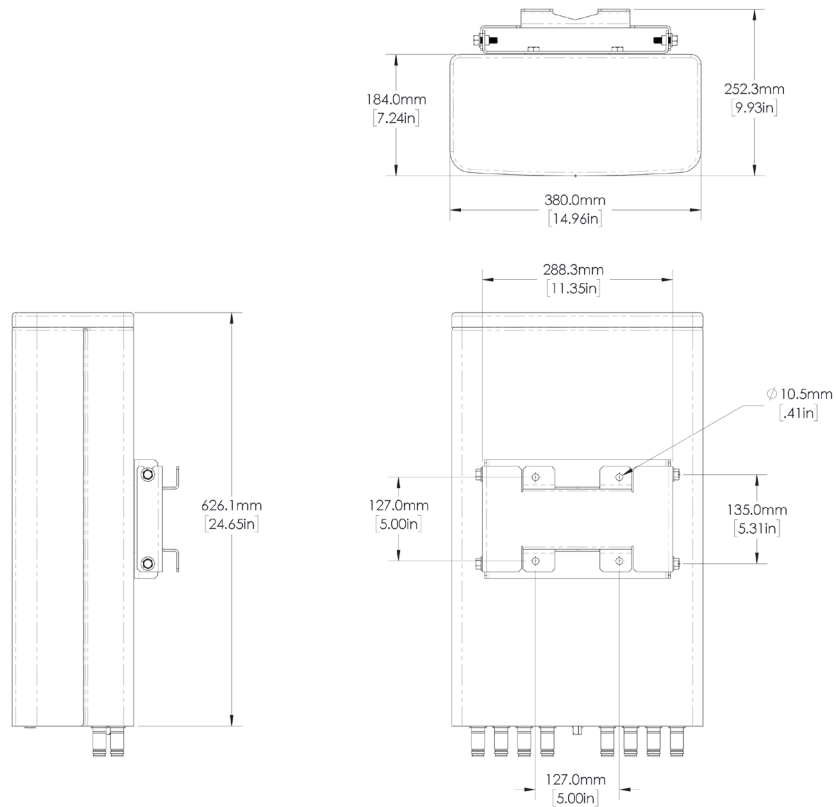
Operating Temperature	-40° to 158°F (-40° to +70°C)
Antenna Weight	17.5 lbs (8 kg)
Antenna Dimension (Height x Width x Depth)	24.7" (626 mm) x 15.0" (380 mm) x 7.2" (184 mm)
Radome Material	ASA
RoHS	Compliant
Radome Color	Gray
Ingress Protection	Outdoor (IP65)
Wind Survival Rating	150 mph (241 km/h)

RFD#: B6789 ; Revision: R1 ; Release Date: August 14, 2020

## Bottom Plate with Port Labels

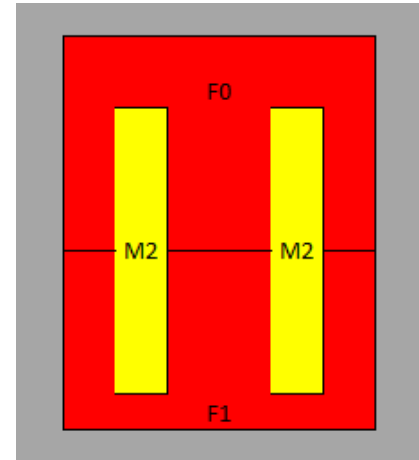


## Antenna Outline



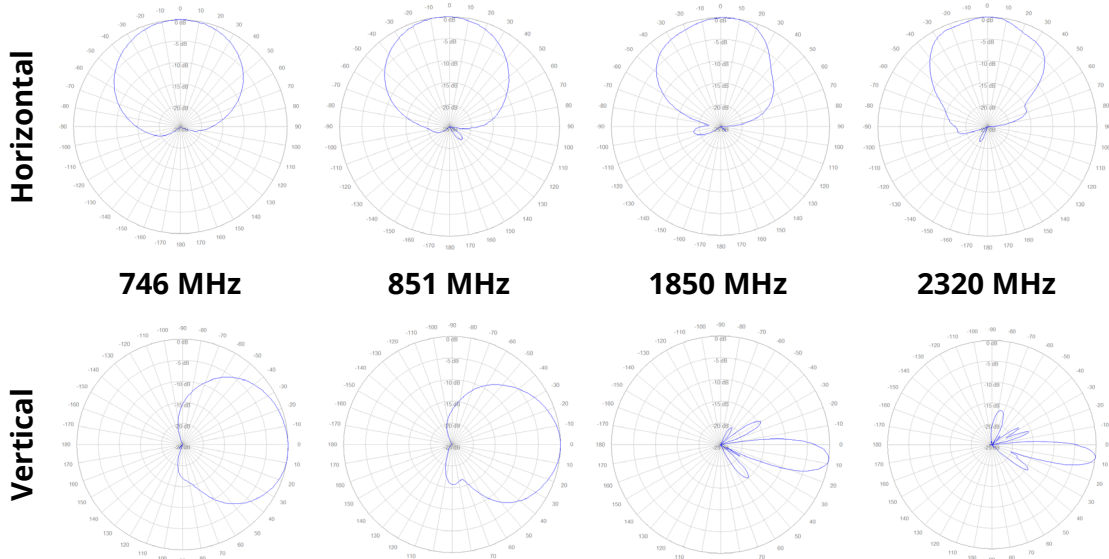
### MET Designator

Frequency Range	MET Designator	Ports	Electrical Tilt
698-896 MHz	F0	1-2	0° Fixed
698-896 MHz	F1	3-4	0° Fixed
1695-2690 MHz	M2	5-6, 7-8	2° - 12° MET



View from behind the antenna

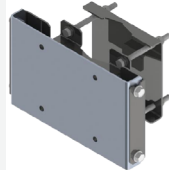

### Antenna Patterns



## Part Numbers & Ordering Options

Description	Color	Mounting Kit	Part Number
65° Directional Panel Antenna with 2-12° MET and 8x 4.3-10(F) Connectors	Gray	Including MK-06853 Wall/Pole Mounting Kit	GP2408-B6789-1xx

## Mounting Brackets & Optional Accessories

<p><b>[Included] Heavy Duty Mounting Bracket</b>  <b>Wind speed of 150 mph</b>  This standard mounting bracket offers an easy installation solution to mount the antenna to either a horizontal or a vertical pole.</p>	 <p>MK-06853</p>
<p><b>[Optional] Heavy Duty Dual Axis Adjustable Mounting Bracket</b>  <b>Wind speed of 150 mph</b>  This optional mounting bracket offers an easy installation solution to mount the antenna to either a horizontal or a vertical pole.</p>	 <p>62-45-09</p>

### Mating Connector Torque:

4.3-10: 3.7 ft-lb ( 5 Nm)

### Matting Connector Torque:

4.3-10: 3.7 ft-lb ( 5 Nm)

Copyright © 2020 – Galtronics Corporation Ltd.

Proprietary Information. All rights reserved. Galtronics reserves the right to modify or amend any antenna or specification without prior notice.