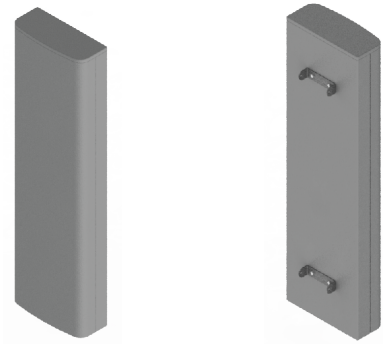


8' 4-Port 65° Base Station Antenna [617-896 MHz]

GP9604-06691

Description:

- Single-sector 4x4 MIMO Base Station Antenna for Outdoor Macro Cell Applications.
- 65° beam width dual-polarized covering 600 MHz/LTE/CELL Bands.
- 4x ports for 617-896 MHz
- Industry-leading width for a 4x4 MIMO 600 MHz capable antenna



617-896 MHz Low Band Base Station Antenna
2x2 or 4x4 MIMO Capable

Electrical Specifications

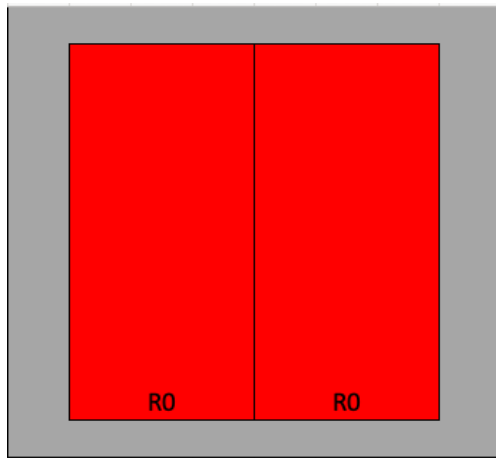
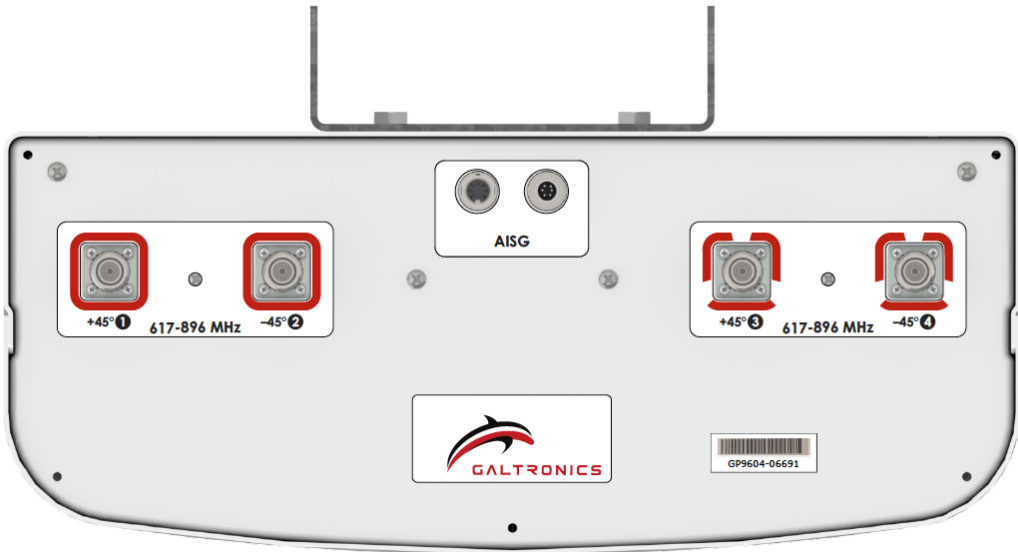
Frequency Range (MHz)	617-698	698-806	806-896
Gain, max. (dBi)	15.7	16.2	16.4
Azimuth Beamwidth (°)	66	60	57
Elevation Beamwidth (°)	11.7	10.4	9.2
Electrical Downtilt Range (°)	2-12		
First Upper Sidelobe Suppression (dB)	18	19	21
Front-to-Back Ratio, 180° (dB)	31	33	32
Front-to-Back Ratio, 180° (dB), min.	24		
Cross-Polar Discr. at Mech. Boresight (dB)	19	24	26
VSWR (max.) / RL (min.) (dB)	1.5:1 / 14.0		
Port-to-Port Isolation (dB)	25		
PIM @ 2x43 dBm (dBc)	N/A	-153	
Max Power per Port (W)	500		
Polarization (°)	±45		
Impedance (Ω)	50		

Electrical Specifications, BASTA

Frequency Range (MHz)	617-698	698-806	806-896
Gain Over All Tilts, Average (dBi)	15.0	15.4	16.0
Gain Over All Tilts, Tolerance (dB)	0.5	0.5	0.3
Azimuth Beamwidth Tolerance (°)	5.4	5.2	4.3
Elevation Beamwidth Tolerance (°)	1.1	0.8	0.6
Upper Sidelobe Suppression, Peak to +20°	17	18	17
Front-to-Back Ratio, Co-Polar, ±30° (dB)	24	25	25
Cross-Polar Discrimination Over Sector (dB)	9	8	7

RFD#06691 ; Revision: R4 ; Release Date: April 22, 2020

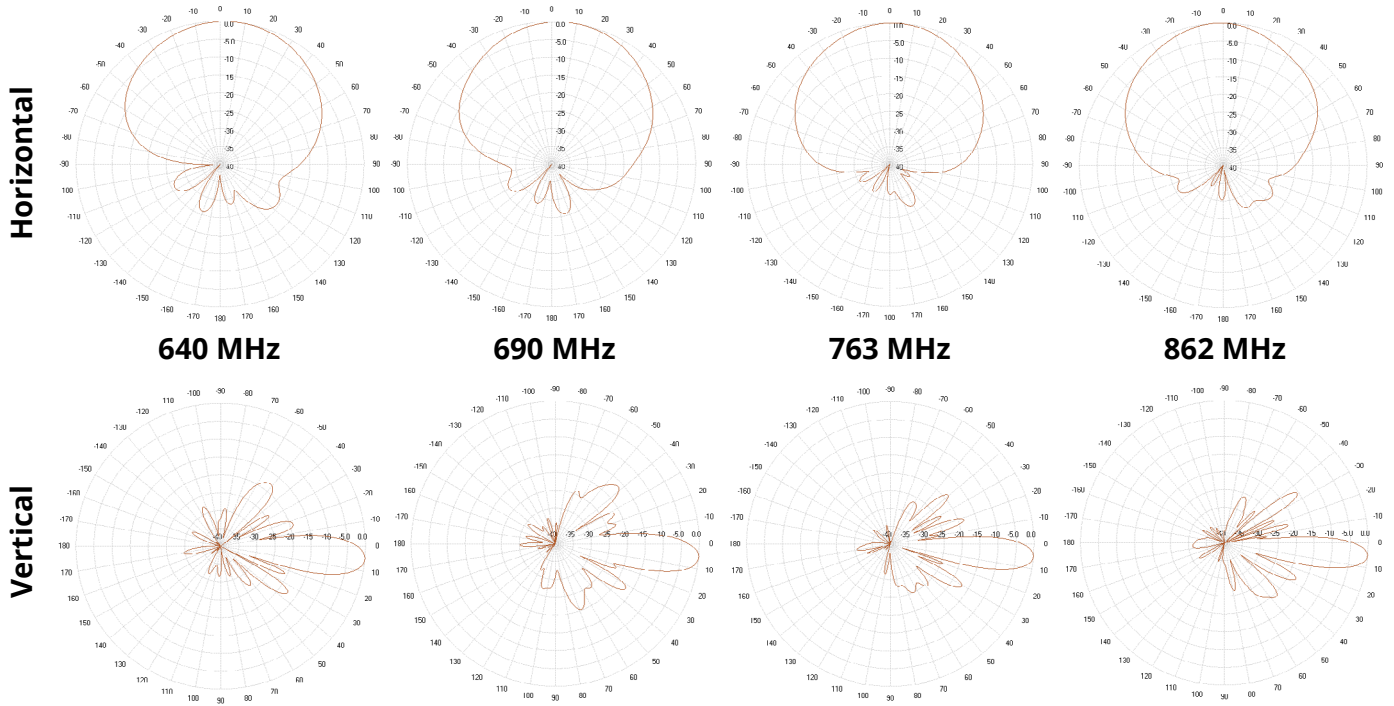
Bottom Plate & RET Designation Details



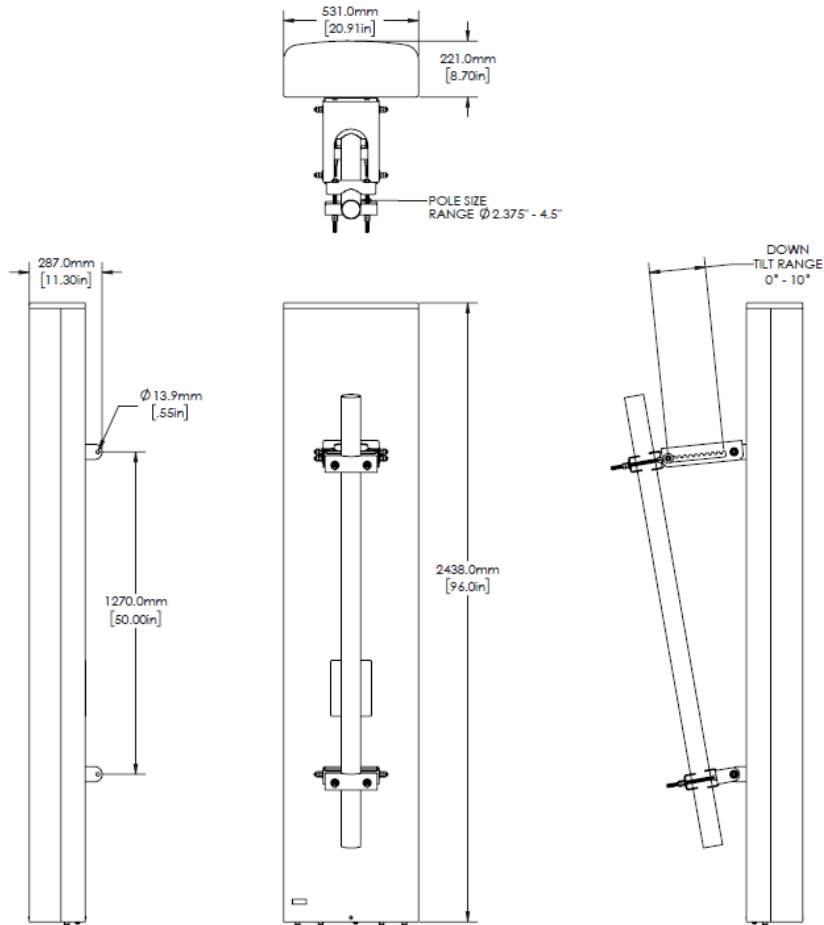
View from behind the antenna

RET Designator			
Frequency Range	RET Designator	Ports	Electrical Tilt
617-896 MHz	R0	1-4	2° - 12°

Antenna Patterns



Antenna Outline





Copyright © 2020 – Galtronics Corporation Ltd.

Proprietary Information. All rights reserved. Galtronics reserves the right to modify or amend any antenna or specification without prior notice.

Mechanical Specifications

Operating Temperature	-40° to 158°F (-40° to +70°C)
Antenna Weight	66 lbs (30 kg)
Mounting Bracket Weight	14 lbs (6.36 kg)
Antenna Dimension (Height x Width x Depth)	96.0" (2438mm) x 20.9" (531mm) x 8.7" (221mm)
Input Connector Type	4x 4.3-10(F)
Radome Material	ASA
RET Specification	Internal, AISG 2.0
Radome Color	Gray
Wind Load, Front (@ 150 km/h)	1752 N / 394 lbf
Wind Load, Side (@ 150 km/h)	865 N / 195 lbf
Wind Load, Maximum (@ 150 km/h)	1875 N / 421 lbf
Wind Survival Rating	150 mph (241 km/h)

Part Numbers, Ordering Options and Accessories

Description	Part Number:
Antenna with 4 x 4.3-10(F) Connectors, Gray (Including MK-07286 Wall/Pole Mounting Bracket)	GP9604-06691-112
Mounting Brackets:	Part Number:
<p>Heavy Duty Mounting Bracket (wind speed of 150 mph) [Included]</p> <p>The MK-07286 standard mounting bracket allows for easy installation of any Galtronics 6' or 8' Base Station Antenna to a macro tower structure. It provides 0°-10° of mechanical downtilt adjustability, and fits pole diameters ranging from 2.375" to 4.5".</p> <p>Note: The MK-07286 mounting bracket can also be ordered separately.</p>	 <p>MK-07286</p>
<p>Heavy Duty Mounting Bracket (wind speed of 150 mph) [Optional]</p> <p>The MK-6807 optional mounting bracket allows for easy installation of any Galtronics 6' or 8' Base Station Antenna to a macro tower structure. It provides 0°-10° of mechanical downtilt adjustability, and fits pole diameters ranging from 3" to 5".</p>	 <p>MK-06807</p>