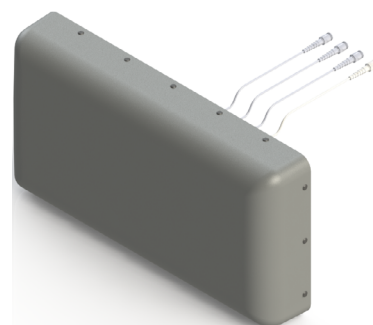


## Wall/Pole Mount 4x4 MIMO Panel Antenna [617-960MHz, 1695-2690MHz and 3300-4200MHz]

# GP2708-07124

### Description:

- Directional MIMO antenna for indoor/outdoor DAS & high capacity venues
- 4x4 MIMO capability to maximize data throughput
- +/-45° cross polarized array design for optimal DAS and Mobile environment MIMO path discrimination



617-960MHz, 1695-2690MHz and 3300-4200MHz  
4x4 MIMO Directional Panel Antenna

### Electrical Specifications

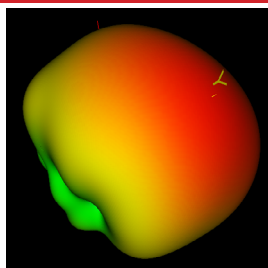
Frequency Band [MHz]	617-698	698-806	806-960	1695-2200	2300-2690	3300-4200
Input Connector Type	4x 4.3-10 (F) w/ Pigtailed (17"/43.2cm)					4x 4.3-10 (F) w/ Pigtailed (17"/43.2cm)
VSWR (Max.) /RL (Min.)	1.7:1/12 dB					
Impedance	50 Ω					
Polarization	Dual Slant 45° (±45°)					
Isolation (Min.)	17 dB			20 dB		
Horizontal Beamwidth	76°	71°	72°	53°	60°	47°
Vertical Beamwidth	67°	66°	69°	58°	67°	58°
Gain (Max.)	7.8 dBi	7.9 dBi	9.0 dBi	8.5 dBi	7.6 dBi	8.8 dBi
Gain (Avg.)	7.0 dBi	7.1 dBi	7.0 dBi	7.5 dBi	6.6 dBi	7.3 dBi
Downtilt	0° Fixed					
Front-to-Back Ratio, 180°	27 dB	24 dB	29 dB	32 dB	34 dB	31 dB
Max Power / Port	100W					50W
PIM @ 2x43 dBm	N/A	<-153 dBc				N/A

### Mechanical Specifications

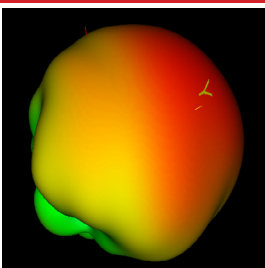
Operating Temperature	-40° to 158°F (-40° to +70°C)
Antenna Weight	13.6 lbs (6.17 kg)
Antenna Dimension (HxWxD)	13.9" (353.4 mm) x 26.98" (685.4 mm) x 5" (127.3 mm)
Radome Material	ASA
Wind Survival Rating	150 mph (241 km/h)
Radome Color	Gray*
Ingress Protection	Indoor/Outdoor (IP65)

\* Radome can be painted with recommended paint "Krylon fusion for plastic"

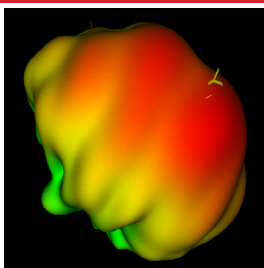
### Antenna Patterns



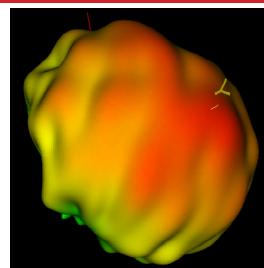
698 MHz



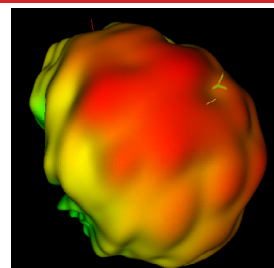
847 MHz



1900 MHz



2442 MHz



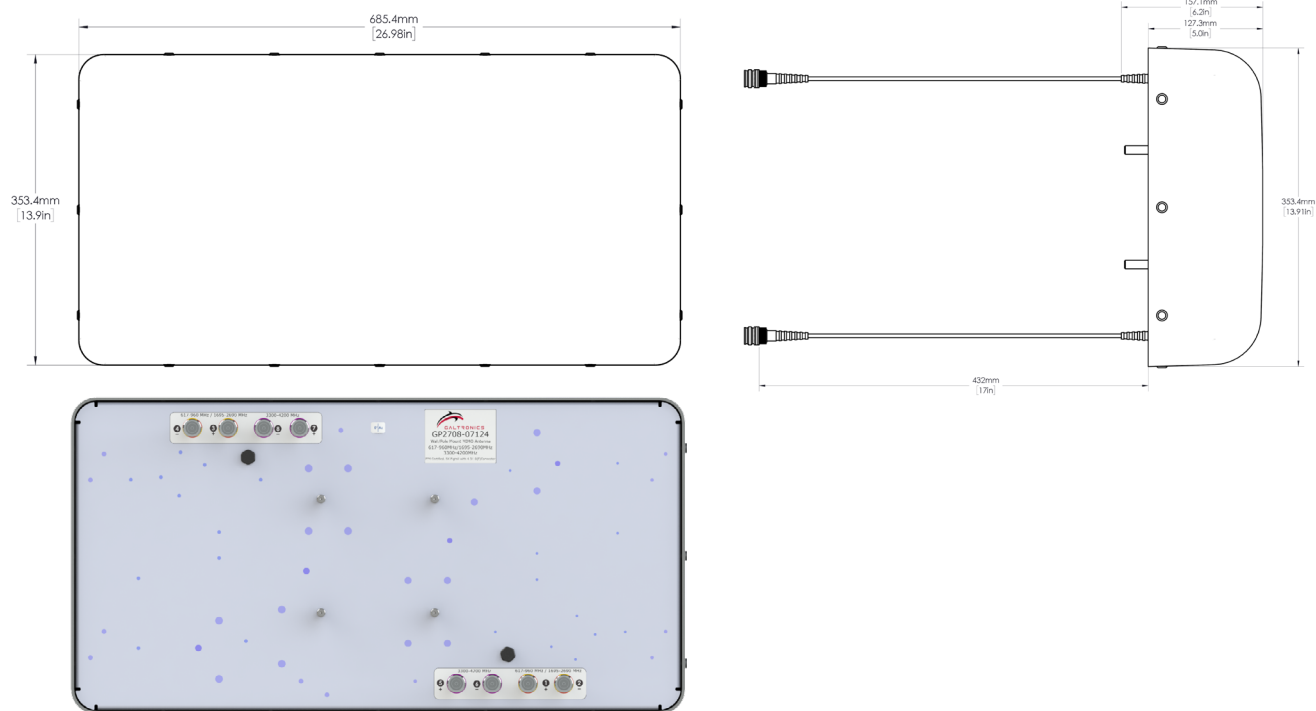
3550 MHz

\* 3D patterns showing antenna radiation direction facing right.

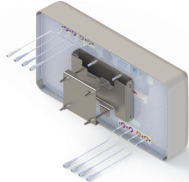
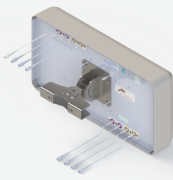
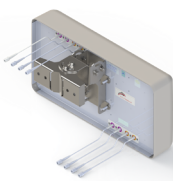
Copyright © 2020 – Galtronics Corporation Ltd.

Proprietary Information. All rights reserved. Galtronics reserves the right to modify or amend any antenna or specification without prior notice.

## Antenna Outline and Back View with Port Labeling



## Part Numbers, Ordering Options and Accessories

Description:	Part Number:
<b>Antenna with 8x 4.3-10 (F) Connectors (Including MK-07305 Wall/Pole Mounting Bracket)</b>	GP2708-07124-112
Mounting Bracket(s):	Part Number:
<b>Heavy Duty Mounting Bracket (wind speed of 150 mph) [Included]</b>  This standard mounting bracket offers an easy installation solution to mount the antenna to either a horizontal or a vertical pole.	 MK-07305
<b>1 or 2 Axis Pole/Wall Mounting Bracket (wind speed up to 170 mph) [Optional]</b>  The mounting bracket allows wall and pole mounting with flexible and continuous antenna adjustment in the horizontal and vertical plane.	 62-45-09
<b>2 Axis Pole/Wall Mounting Bracket (150 mph) [Optional]</b>  Galtronics' mounting bracket offers an easy installation solution to mount Galtronics' stadium antennas to either a pole or a wall. When attaching the antenna to a wall please make sure to select appropriate fasteners (not included).	 62-28-09

### Mating Connector Torque:

4.3-10: 3.7 ft-lb (5 Nm)

Copyright © 2020 – Galtronics Corporation Ltd.

Proprietary Information. All rights reserved. Galtronics reserves the right to modify or amend any antenna or specification without prior notice.