

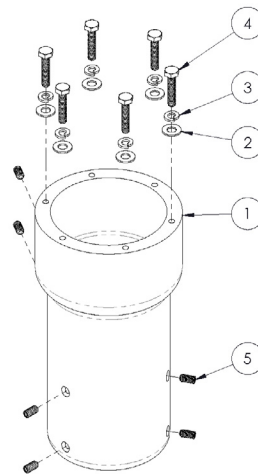
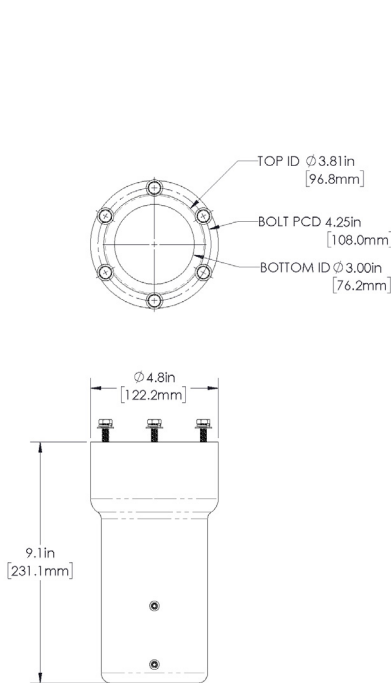
# MK-06841 Extended Top Mount Bracket

The extended bracket combines the MK-06840 bracket kit with the MK-06766 spacer collar and reduces hardware, making for the cleanest & simplest possible installation of 6-port top-mount Whip Antennas.



Top Mount Bracket, Extended

<b>Specifications:</b>	
<b>Environmental Conditions</b>	Outdoor
<b>Weight</b>	5.4 lbs (2.4 kg)
<b>Height</b>	9.1" (231.1 mm)
<b>Outside Diameter</b>	4.8" (122.2 mm)
<b>Material</b>	Aluminum
<b>Wind Survival Rating</b>	150 mph (240 kmh)



<b>Parts List:</b>		
ITEM NO.	QTY.	DESCRIPTION
1	1	EXTENDED BRACKET, WHIP ANTENNA, POLE TOP
2	6	WASHER, FLAT, 1/4" SCREW, 18-8 SS
3	6	WASHER, SPLIT LOCK, 1/4" SCREW, 18-8 SS
4	6	SCREW, HEX HEAD, 1/4"-20 UNC, 1.25" L, 18-8 SS
5	6	SET SCREW, 1/4"-20 UNC, .5" L, 18-8 SS

<b>Ordering Options and Part Numbers</b>		
Description:	Color	Part Number:
Top Mount Bracket, Extended	Gray/Silver (26373, Fed Std 595)	MK-06841-01
Top Mount Bracket, Extended	Black (27038, Fed Std 595)	MK-06841-02