

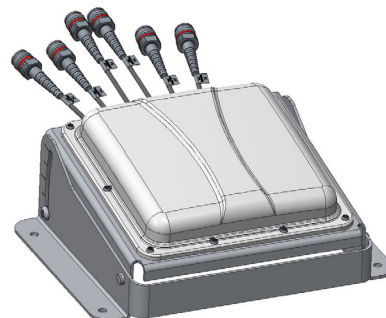
Under The Seat Stadium Antenna [1695-2690 and 5250-5925 MHz]

GP0206-06513

Description:

- Under-Seat MIMO antenna for high capacity and stadium venues.
- Designed for outdoor/indoor environment
- 4x ports for AWS/PCS/WCS/BRS Bands (1695-2690 MHz)
- 2x ports for UNII-2, -3 and -4 Bands (5250-5925 MHz)*

*Antenna meets current U-NII requirements for 6 dBi max. gain.



1695-2690 MHz and 5250-5925 MHz Under The Seat Antenna
(shown with optional adjustable tilt bracket)

Electrical Specifications

	AWS/PCS/WCS/BRS Band	UNII-2, -3 and -4 Bands
Frequency Band [MHz]	1695-2690	5250-5925
Input Connector Type	4x 4.3-10(F) w/17" pigtail	2x 4.3-10(F) w/18.5" pigtail
Isolation (Intraband, min.)	16 dB (1695-1930 MHz) 18 dB (1930-2690 MHz)	20 dB
Isolation (Interband, min.)	23 dB	
VSWR (max.) / RL (min.)	<1.5:1/14 dB (1.8:1/10.9 dB for 2360-2690 MHz)	
Impedance	50 Ω	
Polarization	Vertical	
Horizontal Beamwidth	Omni (360°)	
Vertical Beamwidth	56.5°	41.1°
Gain (max.)	7.7 dBi	6.0 dBi
Gain (avg.)	5.8 dBi	5.1 dBi
Max Power / Port	5 Watts	1 Watt
PIM @ 2x 2W	-153 dBc	N/A

Mechanical Specifications

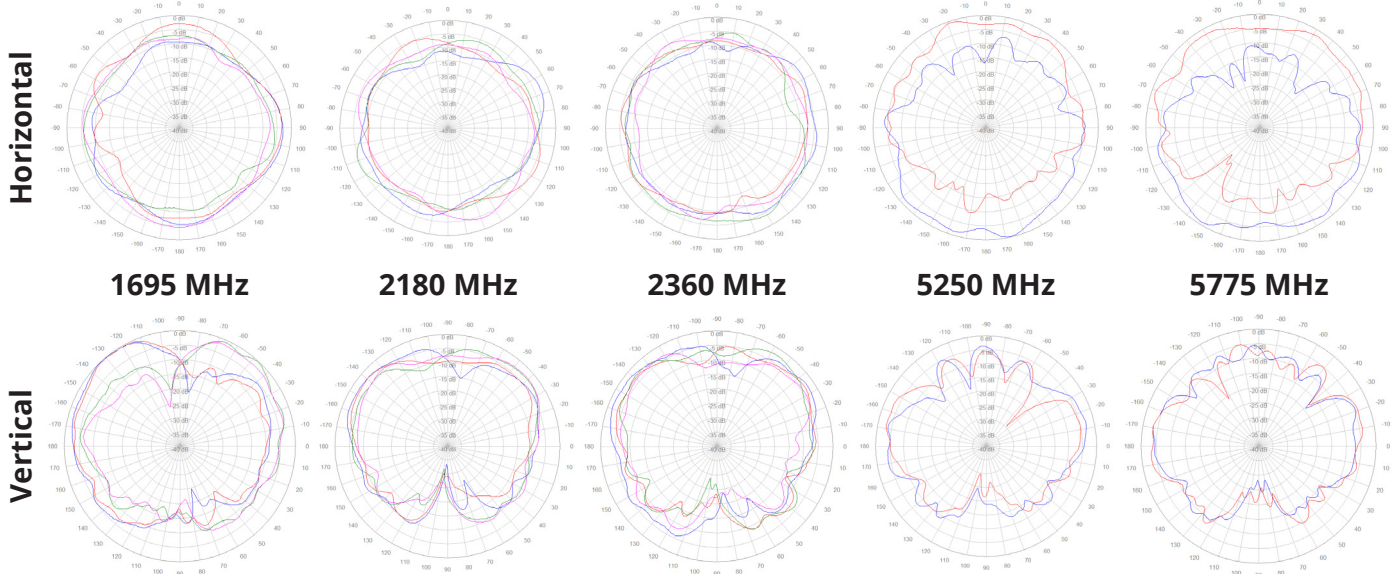
Operating Temperature	-40° to 158°F (-40° to +70°C)
Antenna Weight (Not including Cables)	1.2 lbs (0.54 kg)
Antenna Dimension (Height x Width x Depth)	1.7 inch (42 mm) x 9.0 inch (228 mm) x 9.0 inch (228 mm)
Connector Cable Type	Plenum Rated, UV Stable
Radome Material	PC, UL 94-V0, UV Stable
RoHS	Compliant
Radome Color	White
Ingress Protection	Indoor/Outdoor (IP66)

* Radome can be painted with recommended paint.

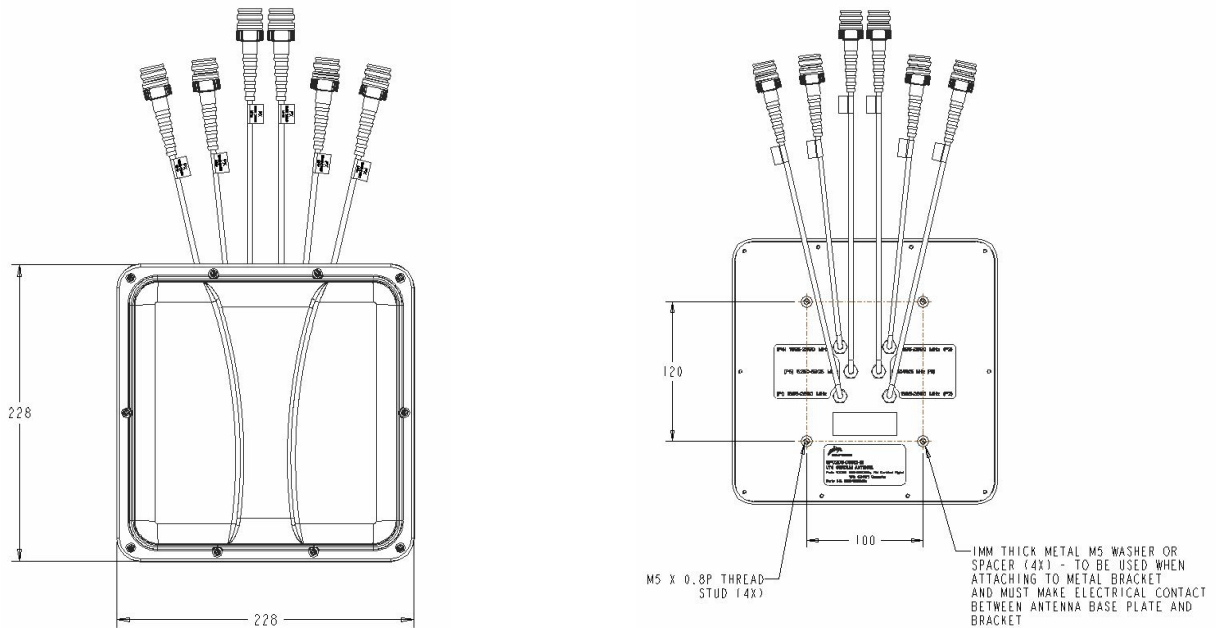
Copyright © 2019 – Galtronics Corporation Ltd.

Proprietary Information. All rights reserved. Galtronics reserves the right to modify or amend any antenna or specification without prior notice.

Antenna Patterns



Antenna Outline



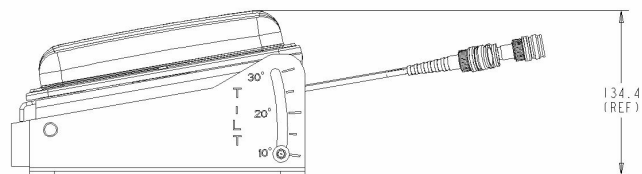
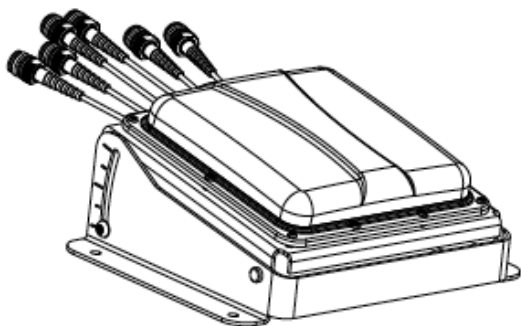
Mating Connector Torque:

4.3-10: 3.7 ft-lb (5 Nm)

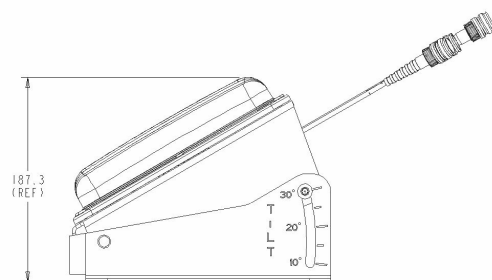
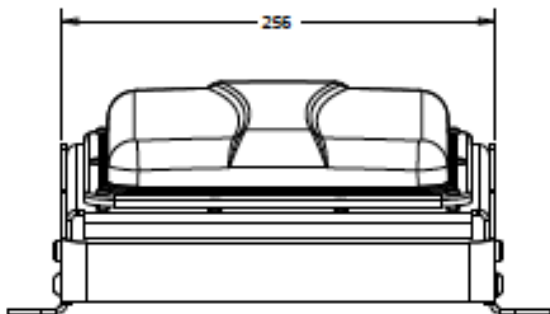
Copyright © 2019 – Galtronics Corporation Ltd.

Proprietary Information. All rights reserved. Galtronics reserves the right to modify or amend any antenna or specification without prior notice.

Antenna Outline (with Optional MK-07068 Bracket)

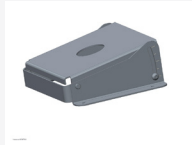



10° TILT



30° TILT

Part Numbers, Ordering Options and Accessories

Description:	Part Number:
Antenna with 6x 4.3-10 (F) Connectors	GP0206-06513-111
Antenna with 6x 4.3-10 (F) Connectors including MK-07068	GP0206-06513-112
Mounting Bracket(s):	Part Number:
Mounting Bracket with 10°-30° Tilt (OPTIONAL)	MK-07068 
Concealment Shroud Assembly with 10° Fixed Tilt (OPTIONAL)	GS-07067 

RFD# 6513 ; Revision: R2 ; Release Date: June 20, 2019;