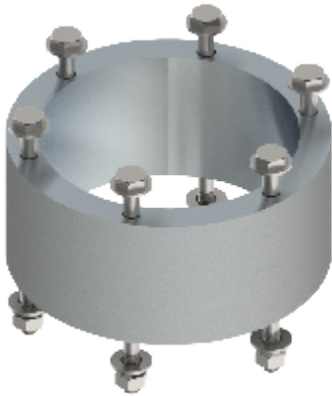


## Galtronics Whip Antenna Accessories

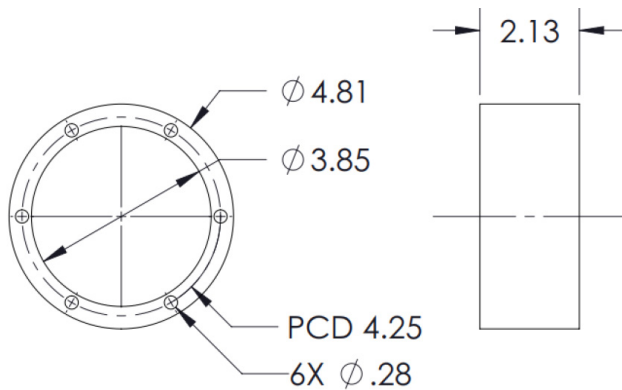
# MK-06766 Spacer Collar

2-port and 4-port Whip Antennas are often mounted directly onto brackets similar to MK-6840. However, when replacing these antennas with Galtronics' 6-port Whip Antennas, more space is required. The MK-06766 spacer collar accomplishes this by raising the antenna and creating a larger cavity underneath to accommodate the additional connectors and weather proofing.



Spacer Collar

<b>Specifications:</b>	
<b>Environmental Conditions</b>	Outdoor
<b>Weight</b>	1.7 lbs (0.78 kg)
<b>Height</b>	2.13" / 54.1mm
<b>Outside Diameter</b>	4.8" / 122 mm
<b>Material</b>	Aluminum
<b>Wind Survival Rating</b>	150 mph (240 kmh)



<b>Parts List:</b>		
ITEM NO.	QTY.	DESCRIPTION
1	1	Spacer Collar
2	6	Hex Bolt, ¼-20 UNC, 3 ¾" long, SS
3	12	Flat Washer, for ¼" bolt, SS
4	6	Spring Lock Washer, for ¼" bolt, SS
5	6	Hex Nut, ¼-20 UNC, SS

### Ordering Options and Part Numbers

Description:	Color	Part Number:	Notes
Spacer Collar	Gray/Silver (26373, Fed Std 595)	MK-06766-01	- For use with top mount whips - Included with 6-port whip antenna ordering options *-612 - Can be purchased separately.
Spacer Collar	Black (27038, Fed Std 595)	MK-06766-02	- For use with top mount whips - Included with 6-port whip antenna ordering options *-622 - Can be purchased separately.

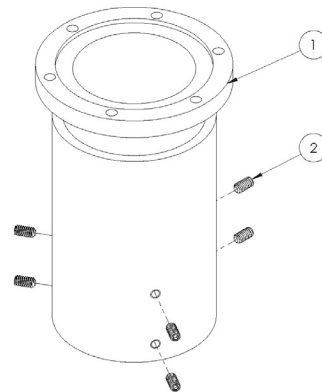
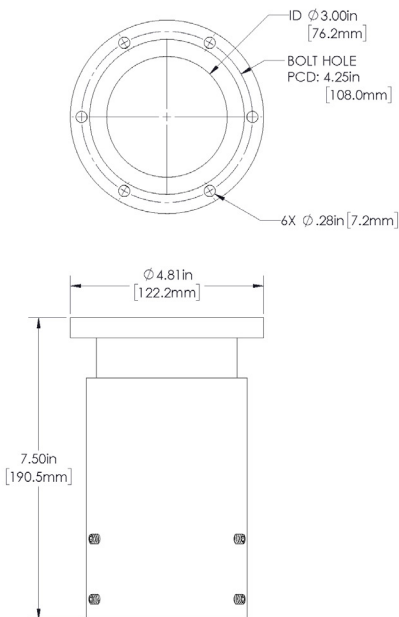
# MK-06840 Stubby Top Mount Bracket

This is Galtronics' most compact top-mount Whip Antenna bracket. By itself, it is suitable for mounting 2-port and 4-port Whip Antennas. For mounting 6-port antennas, it must be combined with the MK-06766 spacer collar.



Top Mount Bracket, Stubby

<b>Specifications:</b>	
<b>Environmental Conditions</b>	Outdoor
<b>Weight</b>	4.0 lbs (1.8 kg)
<b>Height</b>	7.5" (190.5 mm)
<b>Outside Diameter</b>	4.8" (122.2 mm)
<b>Material</b>	Aluminum
<b>Wind Survival Rating</b>	150 mph (240 kmh)



<b>Parts List:</b>		
ITEM NO.	QTY.	DESCRIPTION
1	1	BRACKET, WHIP ANTENNA, POLE TOP
2	6	SET SCREW, 1/4"-20 UNC, .5" L, 18-8 SS

## Ordering Options and Part Numbers

Description:	Color	Part Number:	Notes
Top Mount Bracket, Stubby	Gray/Silver (26373, Fed Std 595)	MK-06840-01	- For use with top mount whips - 6-port whips also require MK-06766
Top Mount Bracket, Stubby	Black (27038, Fed Std 595)	MK-06840-02	- For use with top mount whips - 6-port whips also require MK-06766

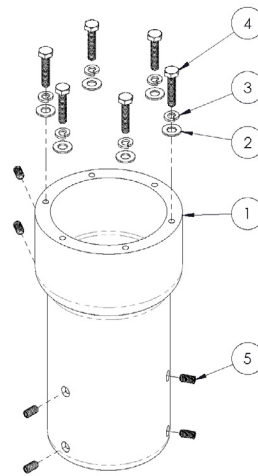
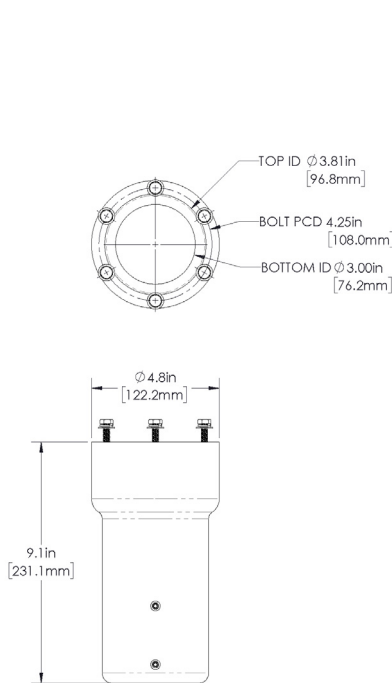
# MK-06841 Extended Top Mount Bracket

The extended bracket combines the MK-06840 bracket kit with the MK-06766 spacer collar and reduces hardware, making for the cleanest & simplest possible installation of 6-port top-mount Whip Antennas.



Top Mount Bracket, Extended

<b>Specifications:</b>	
<b>Environmental Conditions</b>	Outdoor
<b>Weight</b>	5.4 lbs (2.4 kg)
<b>Height</b>	9.1" (231.1 mm)
<b>Outside Diameter</b>	4.8" (122.2 mm)
<b>Material</b>	Aluminum
<b>Wind Survival Rating</b>	150 mph (240 kmh)



<b>Parts List:</b>		
ITEM NO.	QTY.	DESCRIPTION
1	1	EXTENDED BRACKET, WHIP ANTENNA, POLE TOP
2	6	WASHER, FLAT, 1/4" SCREW, 18-8 SS
3	6	WASHER, SPLIT LOCK, 1/4" SCREW, 18-8 SS
4	6	SCREW, HEX HEAD, 1/4"-20 UNC, 1.25" L, 18-8 SS
5	6	SET SCREW, 1/4"-20 UNC, .5" L, 18-8 SS

## Ordering Options and Part Numbers

Description:	Color	Part Number:
Top Mount Bracket, Extended	Gray/Silver (26373, Fed Std 595)	MK-06841-01
Top Mount Bracket, Extended	Black (27038, Fed Std 595)	MK-06841-02

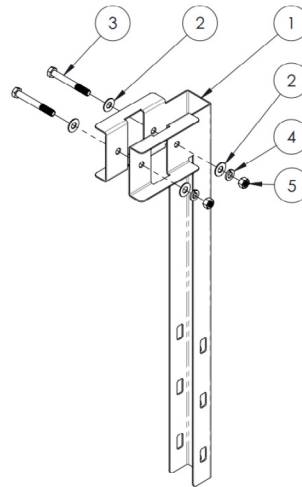
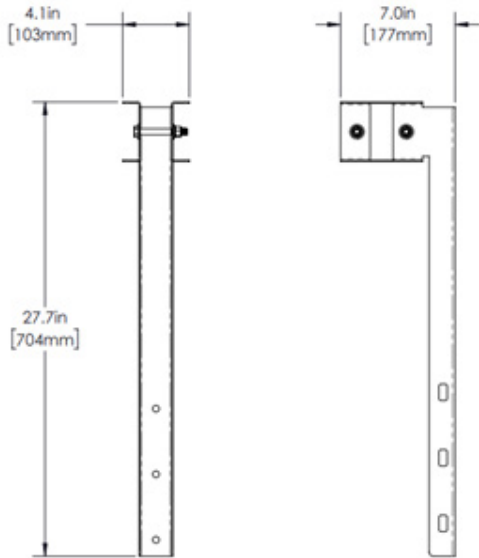
# MK-06696 Side Mount Bracket

This steel mounting bracket is suitable for outdoor Whip antennas with Ø2.4" connector housing, and is recommended for assembly onto poles ranging from 4" (101mm) to 8" (203mm) diameter.



Side Mount Bracket

<b>Specifications:</b>	
<b>Environmental Conditions</b>	Outdoor
<b>Weight</b>	4.1 lbs (1.9 kg)
<b>Dimensions (LxHxW)</b>	7.0" X 27.7" X 4.1" (177mm X 704mm X 103mm)
<b>Pole Diameter Range</b>	4" (101mm) to 8" (203mm)
<b>Material</b>	Steel
<b>Wind Survival Rating</b>	150 mph (240 kmh)
<b>Mounting Hardware to Antenna</b>	Supplied with Bracket
<b>Mounting Hardware to Pole</b>	Not Supplied with Bracket



<b>Parts List:</b>		
ITEM NO.	QTY.	DESCRIPTION
1	1	Bracket
2	4	3/8" Flat Washer, SS
3	2	3/8"-16 UNC x 3" Hex Bolt, SS
4	2	3/8" Spring Lock Washer, SS
5	2	3/8"-16 UNC Hex Nut, SS

<b>Ordering Options and Part Numbers</b>			
Description:	Color	Part Number:	Notes
Side Mount Bracket	Natural (Zinc plated steel)	MK-06696	- For use with side mount whips - Included with 6-port whip antenna ordering options *-112 - Can be purchased separately.