

1" Mount Adapter

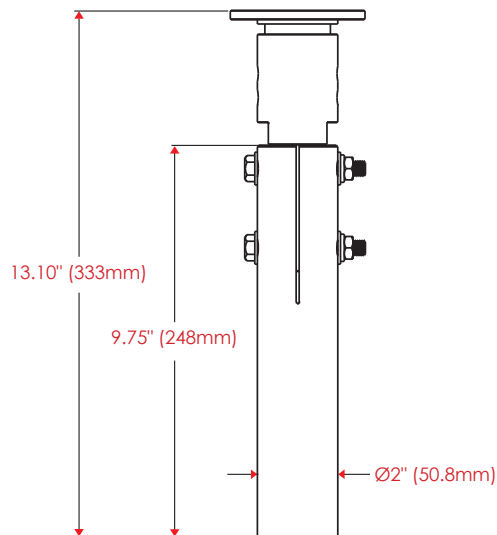
For EXTENT™ oDAS Antennas

Antenna Installation

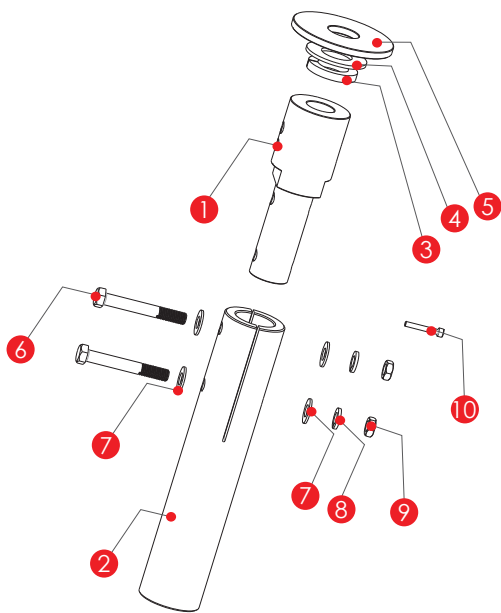
DESCRIPTION:

Galtronics 1" Mount Adapter offers an easy installation solution to mount Galtronics' EXTENT™ Ø10"x24" oDAS antennas with a 1" center bolt to an optional Galtronics Pole Mount Bracket.

Specifications	
Model Number	62-57-09
Environmental Conditions	Outdoor
Weight	4.4 lbs (2.0kg)
Dimensions:	L 13.1" x D Ø2" (333mm x Ø50.8mm)
Material	Aluminum + Stainless Steel
Wind Speed Resistance	150mph (240kmh)
Mounting Style	Pole Mount
Mounting Hardware to Pole Mount	Supplied with Pole Mount
1" Spacer Tightening Torque	140 lbs*in (16Nm)



PART IDENTIFICATION



Mounting Hardware to Pole		
ITEM	QTY	DESCRIPTION
1	1	1" Mounting Spacer
2	1	2" Mounting Adapter
3	1	1" Spring Lock Washer
4	1	1" Plain Washer
5	1	1" Washer
6	2	3/8"x2.75 Hex Bolt
7	4	3/8" Plain Washer
8	2	3/8" Spring Lock Washer
9	2	3/8" Nut
10	1	M4x28 Socket Head Screw

Assembly Instructions for 1" Mount Adapter

STAGE 1 – Mounting Spacer Assembly

Apply Loctite Anti-Seize lubricant LB771 onto 1" center bolt thread.

Insert 1" washer, 1" Plain washer, 1" Spring lock washer and mounting spacer onto antenna 1" center bolt (See Fig. A).

Fasten spacer until bottom hole on spacer is aligned with the hole on 1" center bolt hole.

Insert M4x28 bolt through 1" center bolt (See Fig. B and C).

Fasten mounting spacer all the way, and tighten to torque Of 140 lbf*in (16Nm) (See Fig. D) by using a 1-1/4" wrench.

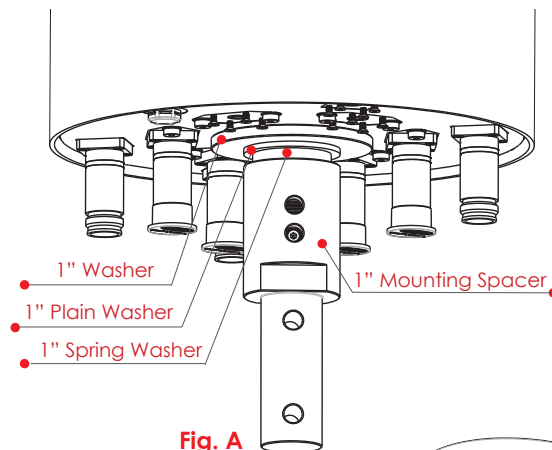


Fig. A

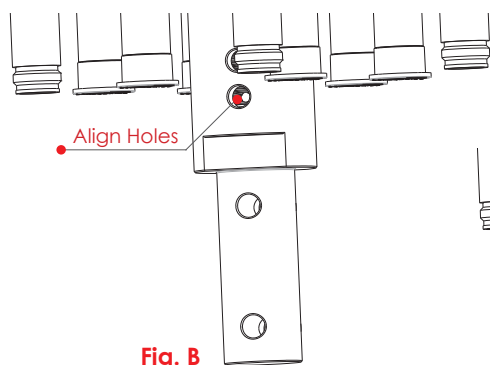


Fig. B

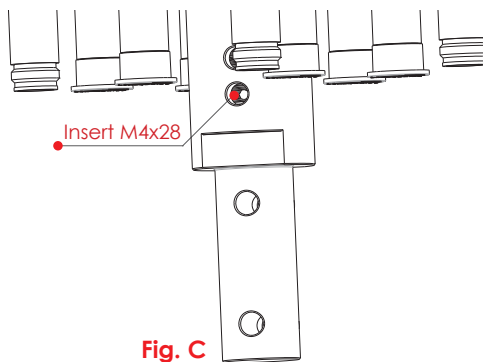


Fig. C

Stage 2 – Mounting Adapter Assembly

Insert 2" Mounting adapter onto mounting spacer.

Align 2 holes for adapter to the holes on mounting spacer

Insert two (2) 3/8"x 2.75" hex head screws with 3/8" washers into holes,

apply Loctite Anti-Seize lubricant LB771 onto bolt thread,

And secure by applying 3/8" washer, 3/8" spring lock washer and 3/8" nut on each bolt. Tighten to torque of 194 lbf*in (22Nm) (See Fig. E and F).

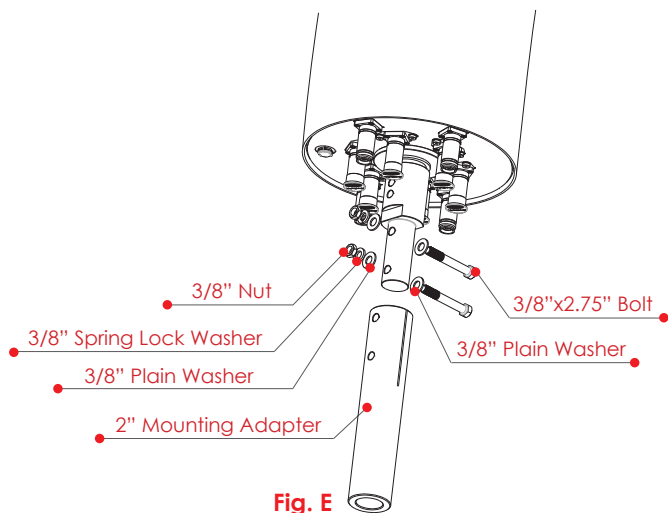


Fig. E

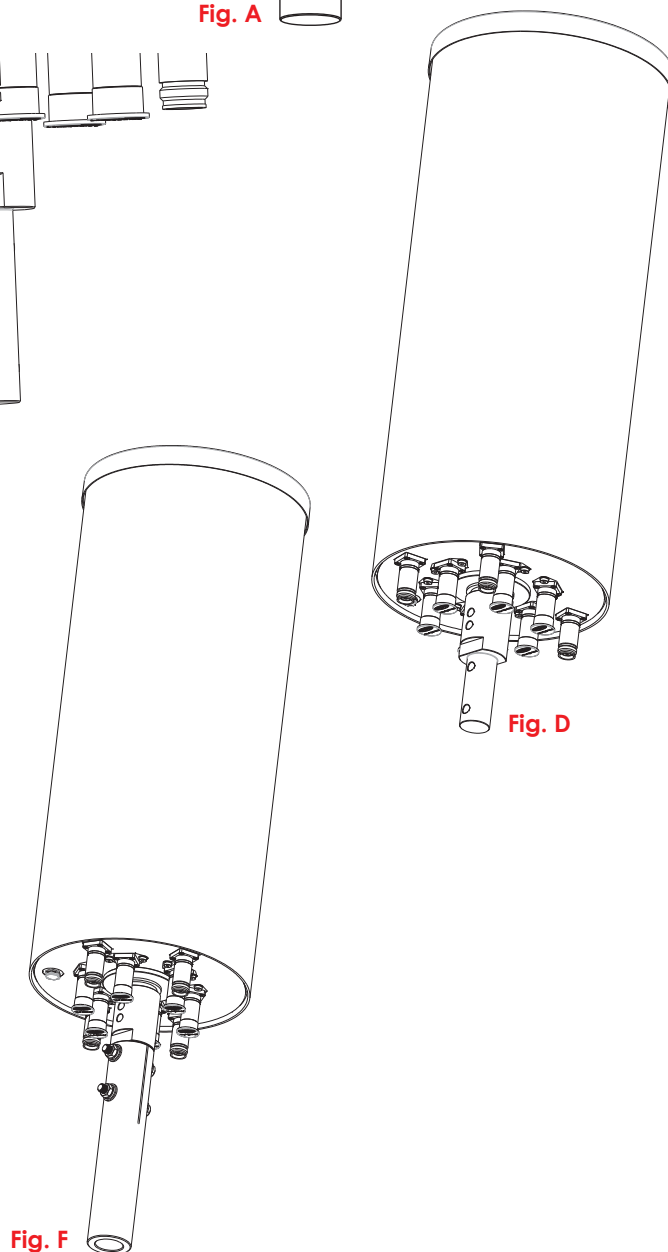


Fig. F