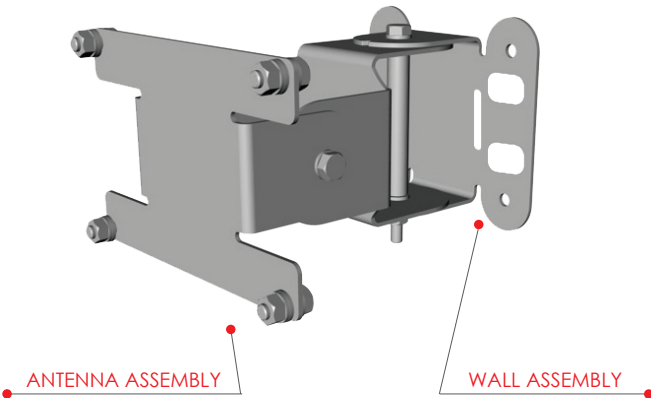


Swivel Mounting Bracket

For PEAR™ Panel Antennas Wall and Pole Installation

DESCRIPTION:

Galtronics swivel mounting bracket offers an easy installation solution to mount Galtronics' PEAR panel antennas to either a pole or a wall. The mounting bracket allows a tilt of up to +/-45deg in the horizontal as well as in the vertical plane..

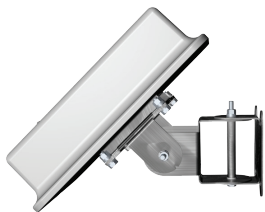


Specifications	
Model Number	62-29-03
Possible Tilt	Up To 45° For Left/Right and Up/Down
Operating Temperature	-40°F to +158°F (-40° to +70°C)
Mounting Style	Wall / Pole Mounting
Material	Aluminum
Weight	~ 1.32 lbs (0.6 Kg)
Dimensions	6.14" / 3.9" (156mm/100mm)
Mounting Hardware to Antenna	Included
Mounting Hardware to Pole/Wall	Not Included

MOUNTING OPTIONS FOR INSTALLATION

The mounting bracket offers following options for installation (mounting hardware to wall/pole NOT included)

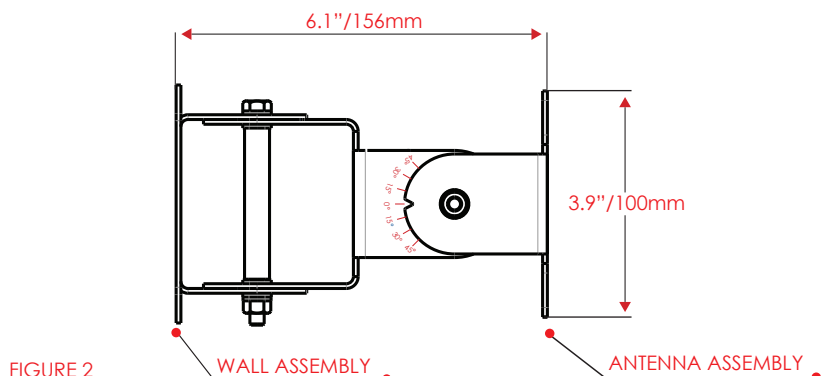
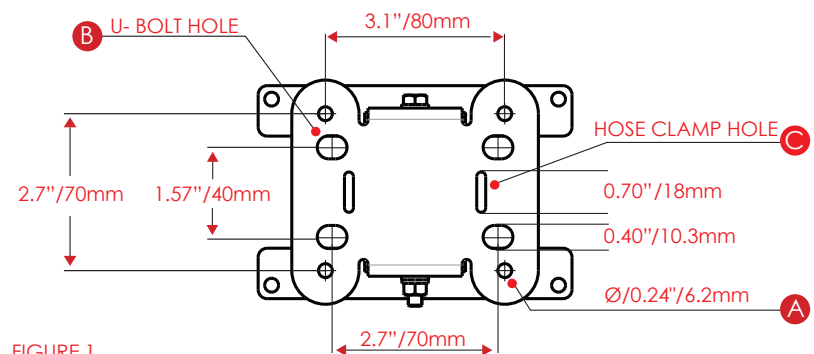
- Wall mount using 4x screws (A)
- Pole mount using 2x U-Bolts suitable for 2" poles (B)
- Pole mount using a hose clamp (C)



TILT UP TO 45°
UP / DOWN



TILT UP TO 45°
LEFT / RIGHT



Stage 1- Installation of MK to Antenna Bracket

- Place M6x16 bolt with M6 washer through appropriate holes on MK and antenna bracket from the MK side, so the vertical long bolt where the M6 Nut faces down. (See figure 1).
- Place M6 washer, M6 Spring Lock Washer and M6 Nut between Antenna Bracket and Antenna Back Plate.
- Use Wrenches on Bolt head and Nut tighten to torque of 53 Lb*In (6Nm).

Stage 2- Attachment of MK to Wall/Pole

- For wall mount: Place the rear side of MK of wall, and mark hole location marked A on Figure 1.
- Drill 4 holes suitable for 3/16" screws required to attached MK to wall. Assemble MK to wall with 3/16" screws (not provided).

Stage 3- Angle Adjustment

- Release M6 Nuts for vertical or horizontal adjustment placed on M6x90 Bolts, tilt the antenna at the required angle according to indicator on each bracket, and tighten nuts to 53 Lb*In (6Nm).

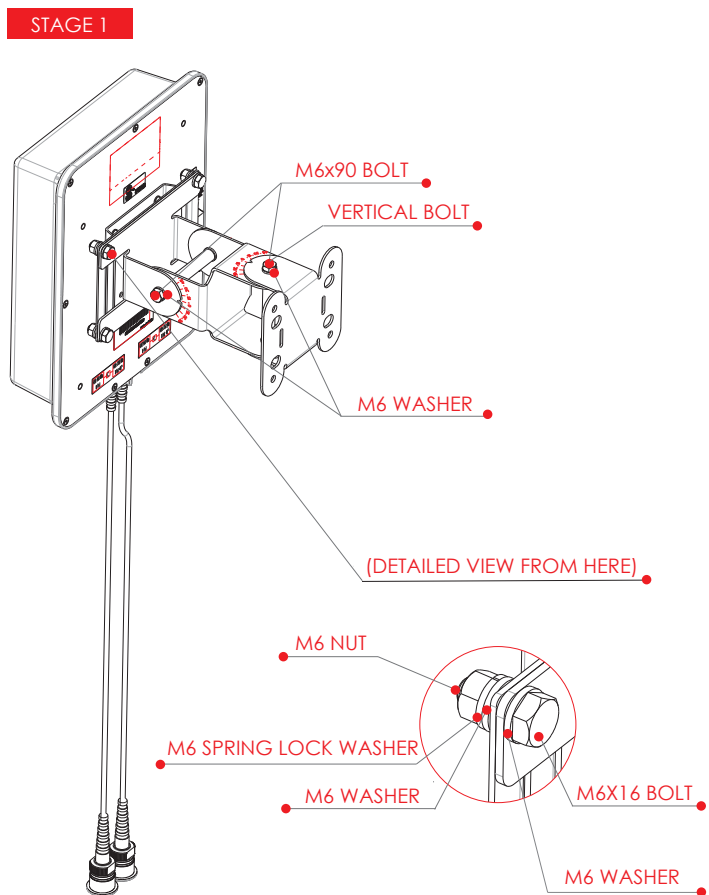


FIGURE 3

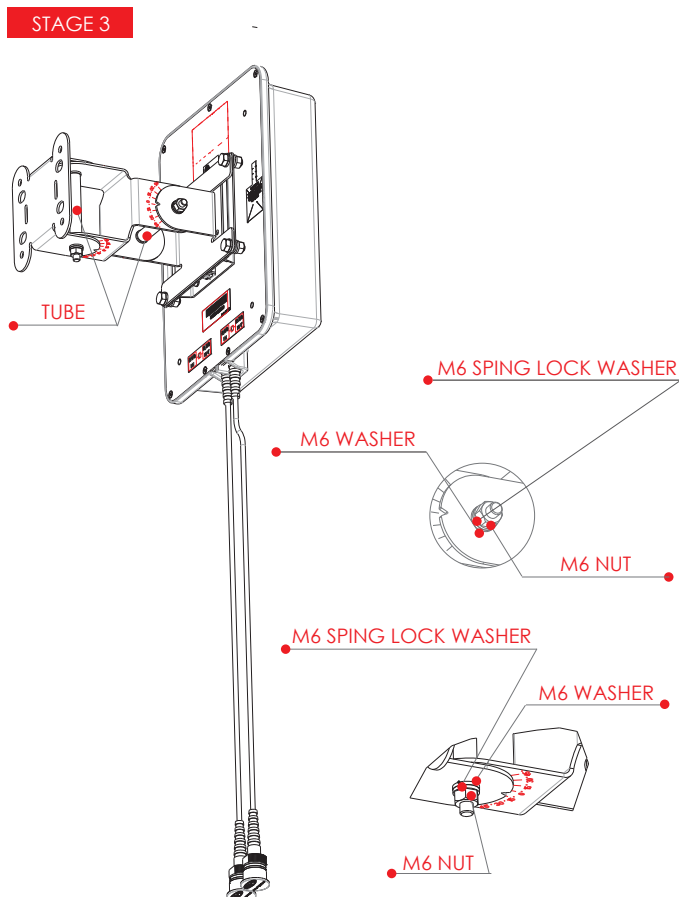
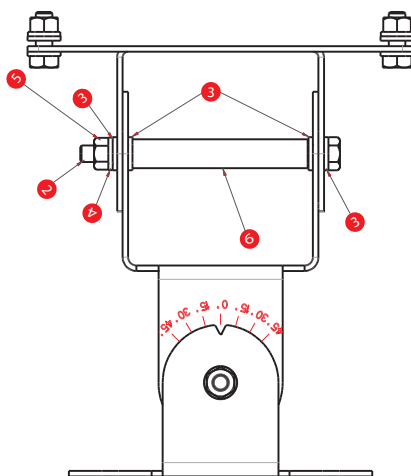
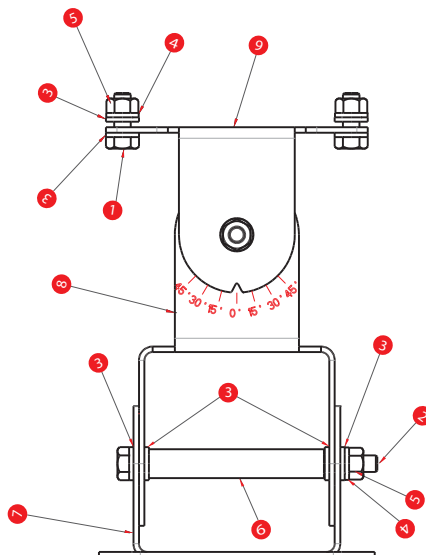


FIGURE 4

PART IDENTIFICATION



Items	Description	Quantity
1	M6x16 Bolt	4
2	M6x90 Bolt	2
3	M6 Washer	16
4	M6 Spring Washer	6
5	M6 Nut	6
6	Tube	2
7	Back Bracket	1
8	Hinge Bracket	1
9	Antenna Bracket	1