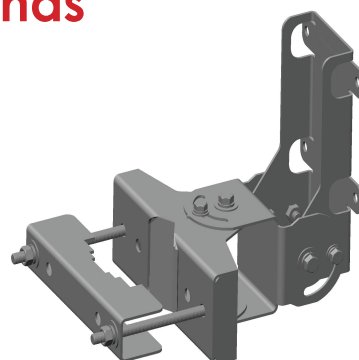


# Mounting Bracket for All Stadium Antennas

## Pole / Wall Mount

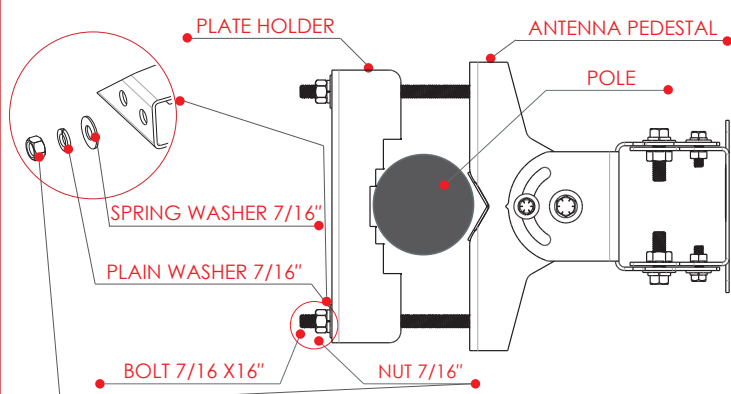
### DESCRIPTION:

Galtronics' mounting bracket offers an easy installation solution for mounting all Galtronics' Stadium Antennas to either a pole or a wall. Please make sure to select appropriate fasteners (not included) when attaching the antennas to a wall.



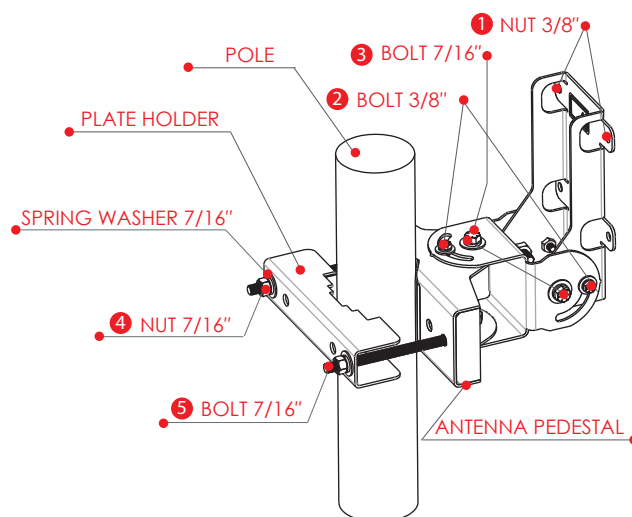
### Galtronics Mounting Bracket for Pole Installation (Option 1)

#### Detail A top view



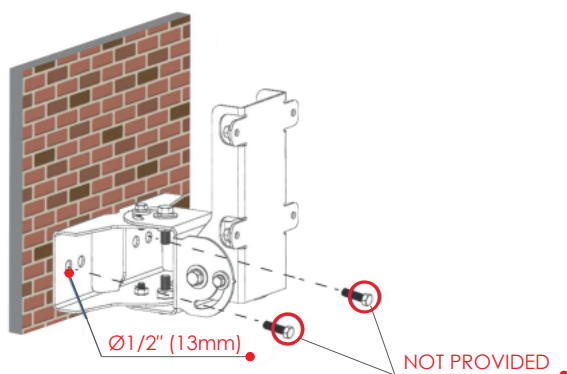
- Attach the Antennas Pedestal to the pole together with the Plate Holder and the 7/16" bolt as shown in **Details A & B**.
- Use the provided hardware to mount the antenna pedestal.

#### Detail B

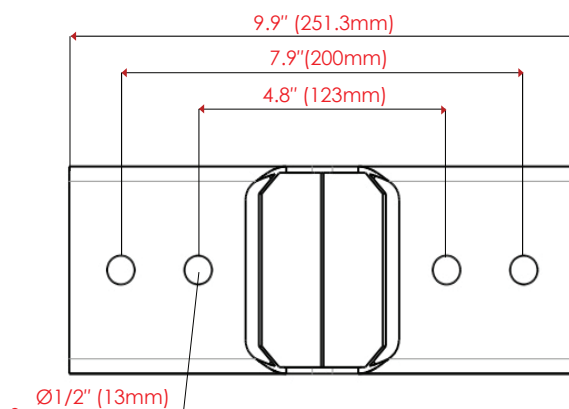


### Galtronics Mounting Bracket for Wall Installation (Option 2)

#### Detail C



- Mark the 2 holes on the wall as shown in **Detail C**.
- Drill 2 holes into the wall according to markings



- Attach the antenna pedestal to the wall using 1/2" (12mm) bolts (not included)

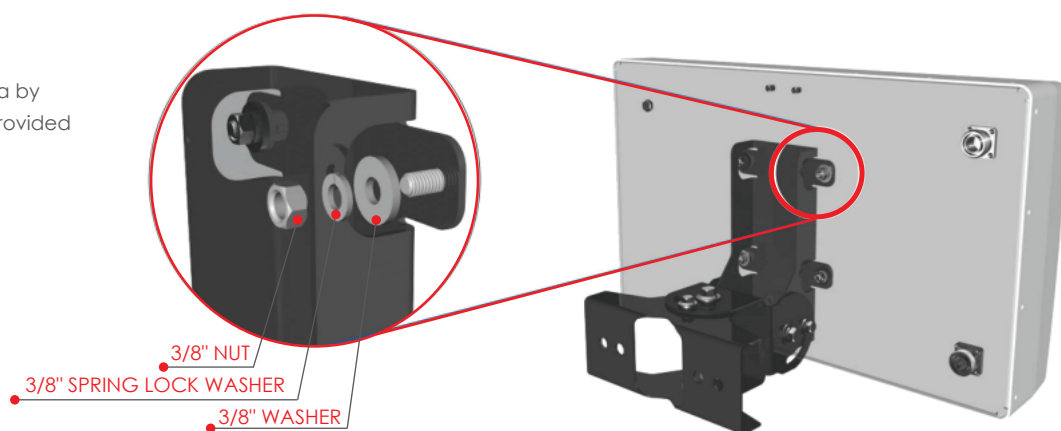
Items	Wrench	Description	Tightening torque
1	9/16" (14.3mm)	Nut 3/8"	88 lb* inch (10Nm)
2	9/16" (14.3mm)	Bolt 3/8"	142 lb* inch (16Nm)
3	5/8" (15.9mm)	Bolt 7/16"	310 lb* inch (35Nm)
4	5/8" (15.9mm)	Pole Mount Nut 7/16"	175 lb* inch (20Nm)
5	5/8" (15.9mm)	Pole Mount Bolt 7/16"	175 lb* inch (20Nm)

**SEE DETAIL B FOR ITEM NUMBERS**

**Detail D**

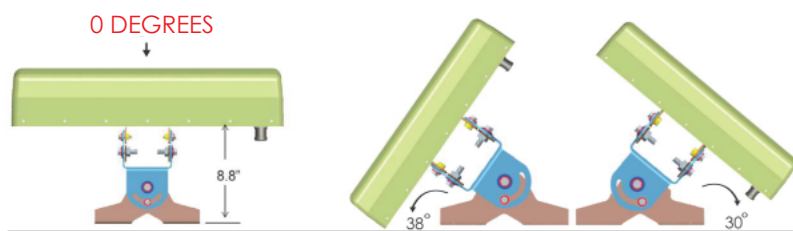
Mounting kit is attached to antenna by 3/8" washers and nuts, which are provided on antenna.

Tightening torque: 88 Lb\*In (10Nm)

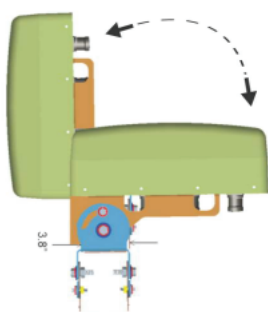
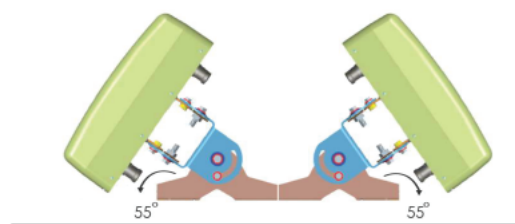


**ANTENNA HORIZONTAL & VERTICAL OTIONS**

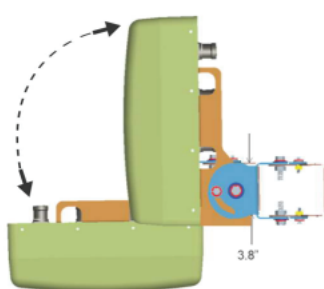
**Horizontal Antenna Mounting**



**Vertical Antenna Mounting**



90 DEGREES



90 DEGREES

