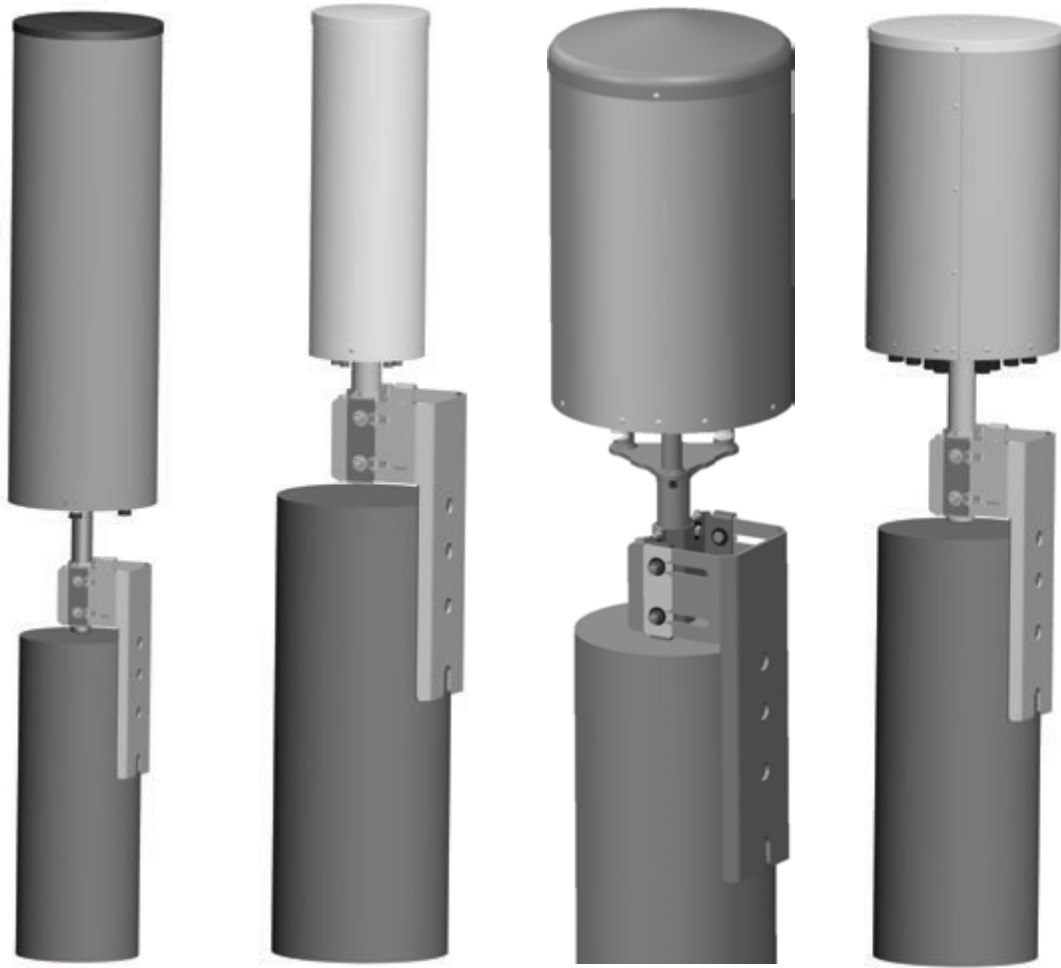


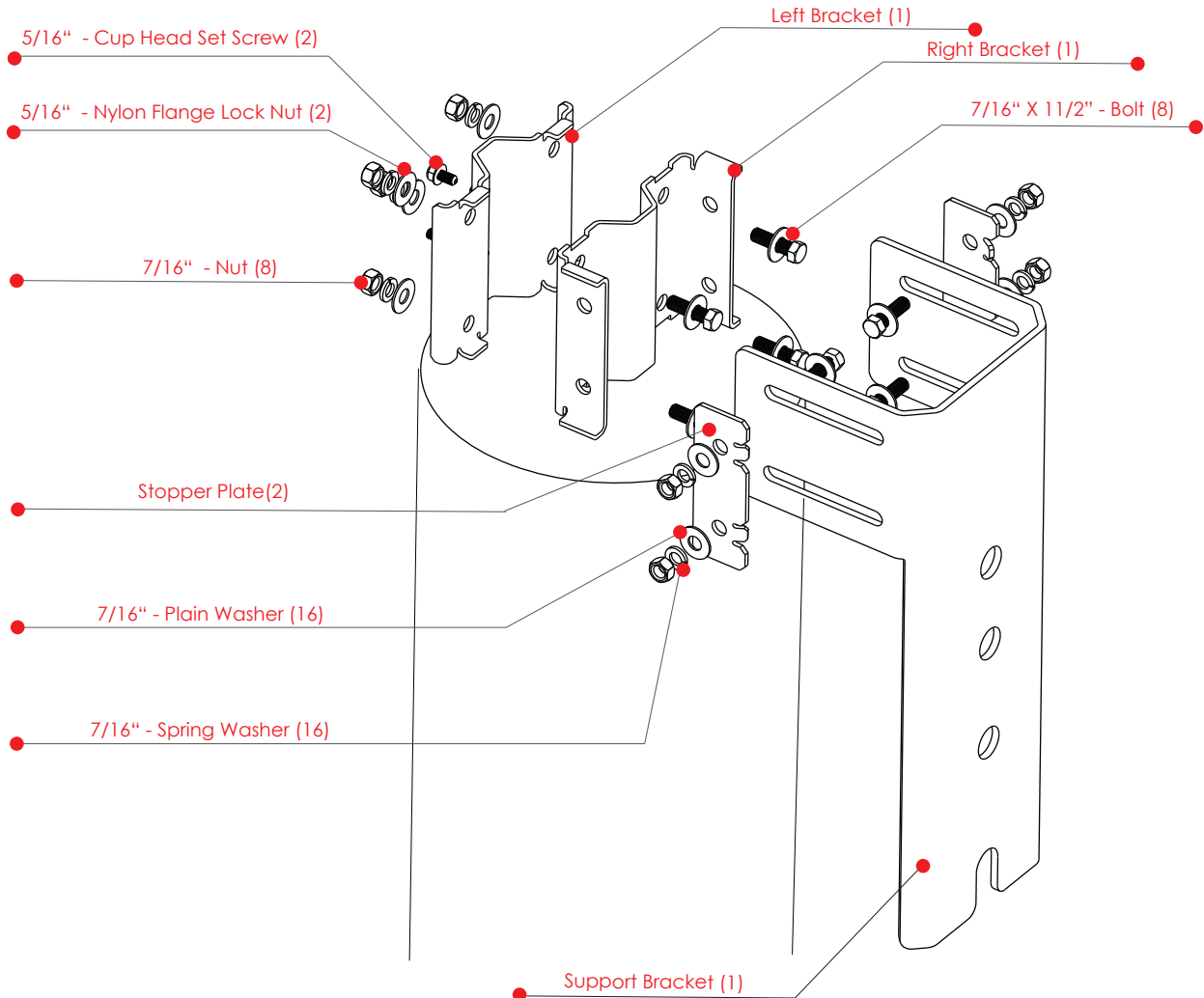
## Mounting Instructions Outdoor DAS Antennas



Ø 14.5"x 48" Length - & Ø 14.5"x 24" Length



## PARTS IDENTIFICATION



-  7/16" X 1 1/2" - Bolt (8)
-  7/16" - Nut (8)
-  7/16" - Plain Washer (16)
-  7/16" - Spring Washer (8)
-  5/16" - Cup Head Set Screw (2)
-  5/16" - Nylon Flange Lock Nut (2)
- Support Bracket (1)
- Left Bracket (1)
- Right Bracket (1)
- Stopper Plate(2)

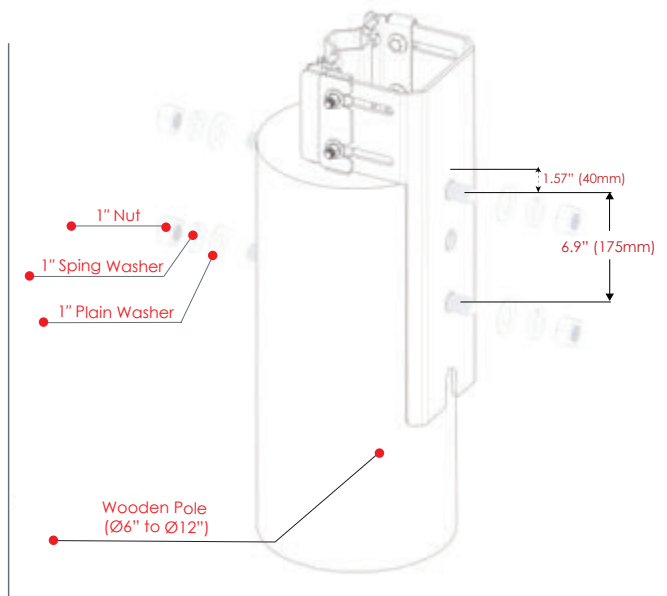
# ASSEMBLY INSTRUCTIONS

## A. Attach support bracket to pole

Drill required hole ( $\varnothing$  1.1") through the wooden pole (see drawing).  
Attach the support bracket to the wooden pole.

Our recommendation:  
Use 1" threaded rods and corresponding 1" plain washer, spring washers and 1" Nut as shown in the drawings.

Tighten with a torque of 150Nm (1328 In\*Lbs).  
Choose threaded rod length according to Table 1.1.



**Table 1.1 - Threaded rod length**

Pole diameter:	6" (152mm)	7" (177mm)	8" (203mm)	9" (228mm)	10" (254mm)	11" (279mm)	12" (305mm)
Threaded rod length:	9" (228mm)	10" (254mm)	11" (279mm)	12" (305mm)	13" (330mm)	14" (355mm)	15" (381mm)

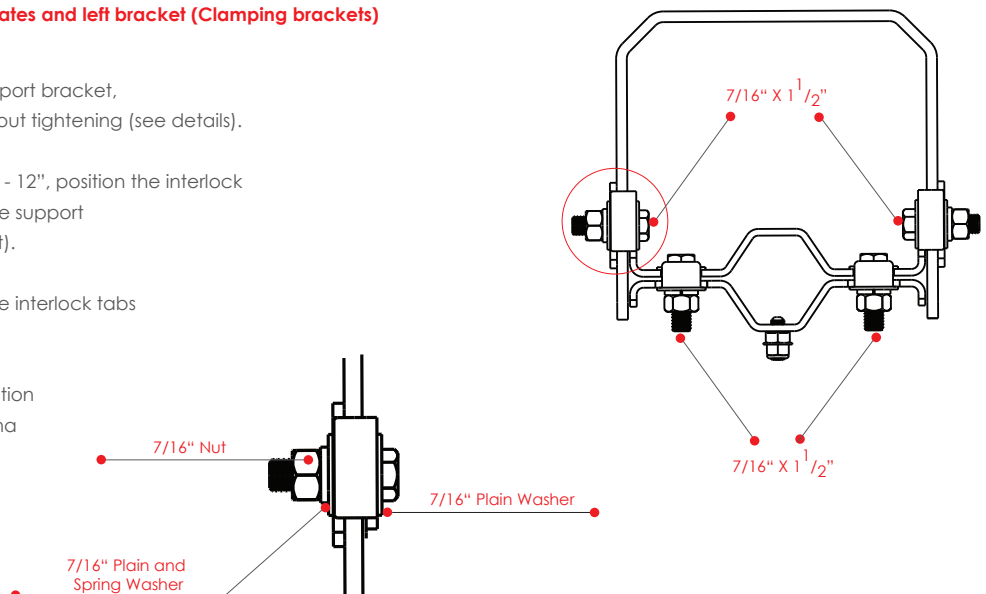
## B. Assemble right bracket stopper plates and left bracket (Clamping brackets)

Use 7/16" fasteners to attach the support bracket, stopper plates and left brackets without tightening (see details).

For a pole with diameter between 9" - 12", position the interlock tabs of the stopper plates towards the support bracket (see picture detail on the left).

For 6" - 9" pole diameters position, the interlock tabs away from the support bracket.

Tightening hardware to the final position will be done after placing the antenna on the pole!



### C. Antenna Mounting

Place the antenna rod on top of the pole and adjust the position of the right bracket to the center of the pole. Tighten all bolts.

### D. Cup Head Screw Installation

Install 5/16" cup head set screw and tighten to the appropriate torque. Lock the antenna rod using the nylon flange locking hex nut. Tighten hex nut to 15Nm (132In\*Lbs).

**DO NOT REUSE LOCKING HEX NUT.  
ONLY USE NEW LOCKING HEX NUTS  
FOR ANTENNA MOUNTING ADJUSTMENTS.**

### E. Check Torque

After adjustment all loosened bolts must be tightened with a torque of:

- 5/16" - 15Nm (132In\*Lbs)
- 7/16" - 40Nm (354In\*Lbs)
- 1" - 150Nm (1328In\*Lbs)

