

Top Mounting Bracket on Pole for oDAS Antennas

Antenna Installation

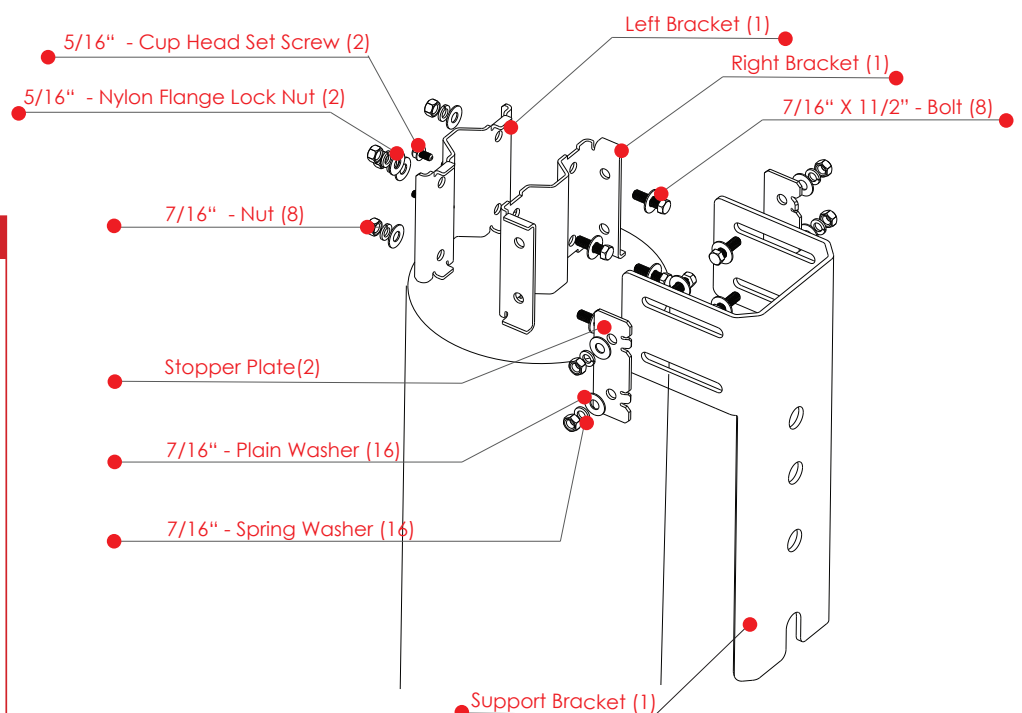
DESCRIPTION:

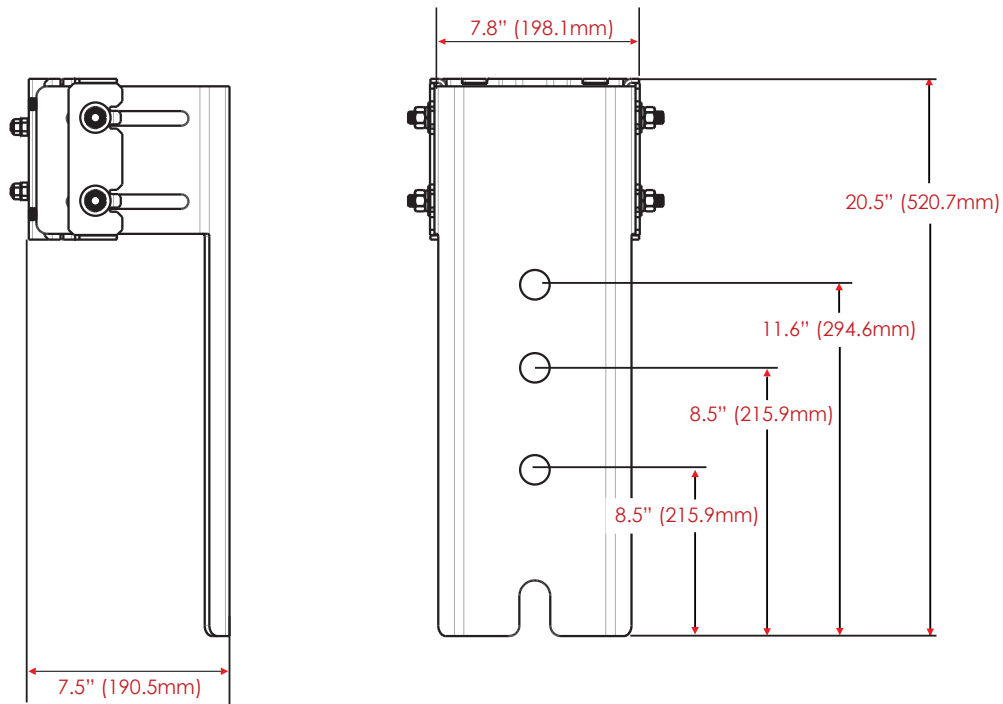
Galtronics top mounting bracket offers an easy installation for Galtronics' oDAS Antennas of max Ø14.5" X 48" on poles with range of Ø6" to Ø12" (Ø152mm to Ø381mm) or a wall.

Specifications	
Model Number	62-20-09
Environmental Conditions	Outdoor
Weight	18.7 lbs (8.5kg)
Dimensions:	7.5" x 7.8" X 20.5" (190.5mm x 198.1mm x 520.7mm)
Material	Carbon Steel
Wind Speed Resistance	150MPH (241KMh)
Pole Diameter Range	Ø6" (152mm) to 12" (381mm)
Mounting Style	Top Mount
Mounting Hardware to Antenna	See Kit Below
Mounting Hardware to Pole Mount	Not Included

PART IDENTIFICATION

	7/16" X 1 1/2" - Bolt (8)
	7/16" - Nut (8)
	7/16" - Plain Washer (16)
	7/16" - Spring Washer (8)
	5/16" - Cup Head Set Screw (2)
	5/16" - Nylon Flange Lock Nut (2)
	Support Bracket (1)
	Left Bracket (1)
	Right Bracket (1)
	Stopper Plate(2)





ASSEMBLY INSTRUCTIONS

A. Attach support bracket to pole

Drill required hole (Ø 1.1") through the wooden pole (see drawing). Attach the support bracket to the wooden pole.

Our recommendation: Use 1" threaded rods and corresponding 1" plain washer, spring washers and 1" Nut as shown in the drawings.

Tighten with a torque of 150Nm (1328 In*Lbs). Choose threaded rod length according to Table 1.1.

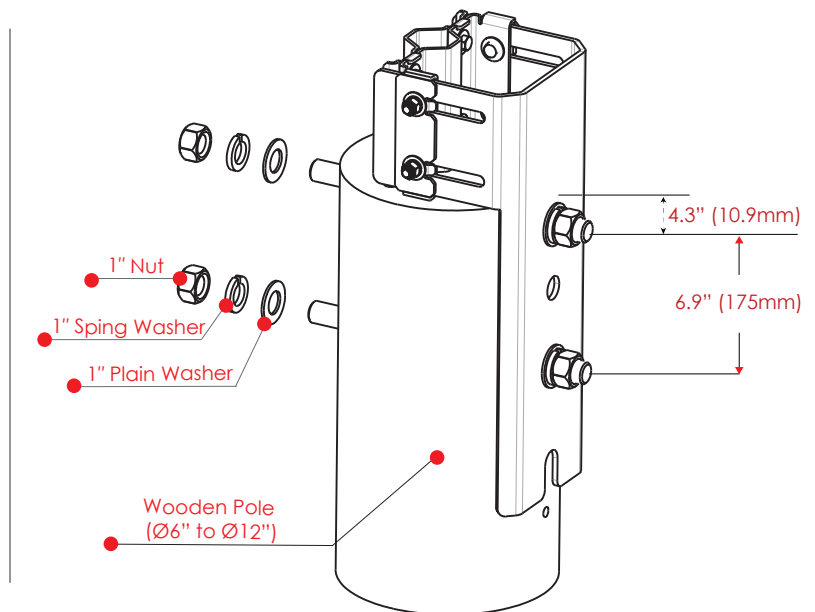


Table 1.1 - Threaded rod length							
Pole diameter:	6" (152mm)	7" (177mm)	8" (203mm)	9" (228mm)	10" (254mm)	11" (279mm)	12" (305mm)
Threaded rod length:	9" (228mm)	10" (254mm)	11" (279mm)	12" (305mm)	13" (330mm)	14" (255mm)	15" (381mm)

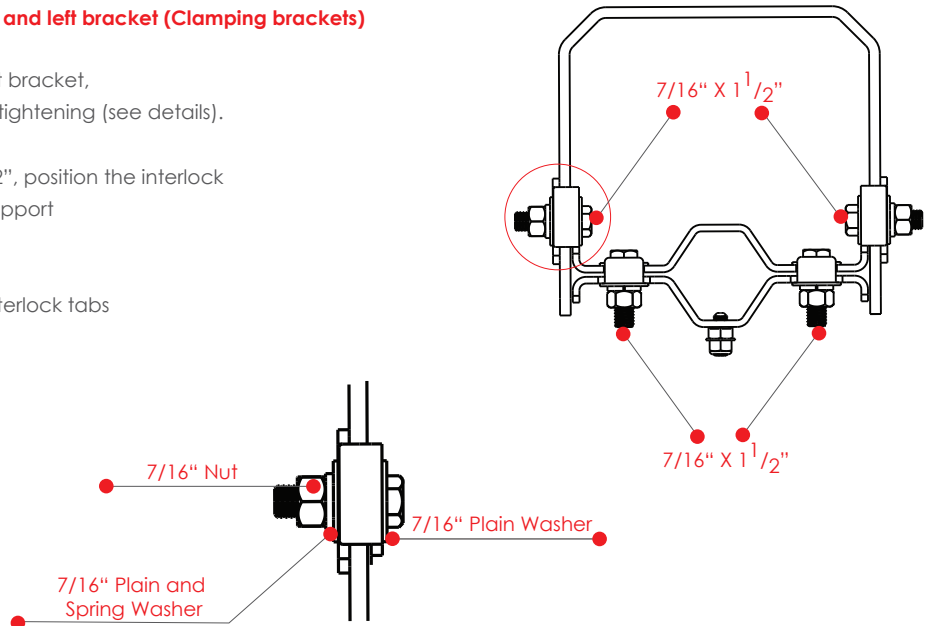
B. Assemble right bracket stopper plates and left bracket (Clamping brackets)

Use 7/16" fasteners to attach the support bracket, stopper plates and left brackets without tightening (see details).

For a pole with diameter between 9" - 12", position the interlock tabs of the stopper plates towards the support bracket (see picture detail on the left).

For 6" - 9" pole diameters position, the interlock tabs away from the support bracket.

Tightening hardware to the final position will be done after placing the antenna on the pole!



C. Antenna Mounting

Place the antenna rod on top of the pole and adjust the position of the right bracket to the center of the pole. Tighten all bolts.

D. Cup Head Screw Installation

Install 5/16" cup head set screw and tighten to the appropriate torque. Lock the antenna rod using the nylon flange locking hex nut. Tighten hex nut to 15Nm (132In*Lbs).

**DO NOT REUSE LOCKING HEX NUT.
ONLY USE NEW LOCKING HEX NUTS
FOR ANTENNA MOUNTING ADJUSTMENTS.**

E. Check Torque

After adjustment all loosened bolts must be tightened with a torque of:

- 5/16" - 15Nm (132In*Lbs)
- 7/16" - 40Nm (354In*Lbs)
- 1" - 150Nm (1328In*Lbs)

