



EXTENT™ D5501i

30°/60° Narrow Beam Directional Antenna

[MIMO 698-960 MHz and 1710-2700 MHz]

DESCRIPTION:

Broadband directional single-sector MIMO antenna for high-capacity venues like stadiums or campuses.

Electrical Specifications	Low Band			High Band		
Frequency Band	698-820 MHz	820-900 MHz	900-960 MHz	1710-1910 MHz	1910-2180 MHz	2180-2700 MHz
Polarization	Dual slant 45° (±45°)					
VSWR/Return Loss	<1.6:1/12.7 dB		<1.7:1/11.8 dB	<1.7:1/11.8 dB		
Input Connector Type	2x or 4x 7-16 DIN (F), Back Mount					
In Band Isolation between Ports	<-25 dB Typical					
Inter Band Isolation between Ports	<-40 dB Typical			<-35 dB Typical		
Gain	10.0 dBi	11 dBi	11 dBi	10.5 dBi	11.0 dBi	11.5 dBi
Azimuth ±5°	30°	30°	30°	30°	30°	27°
Elevation ±8°	65°	65°	65°	65°	65°	65°
Impedance	50 Ω					
Downfilt	0° fixed					
PIM @ 2 x 43 dBm	< -150 dBc					
Front to Back at Horizontal	>25			>25		
Max. Input Power per Port	150 W					

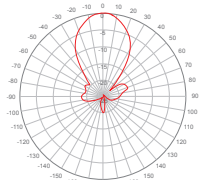
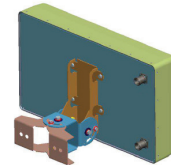
Mechanical Specifications	
Operating Temperature	-40° to 158° F (-40° to +70° C)
Antenna Weight	10.6 lbs (4.8 kg)
Antenna Height	14.4" (367mm)
Antenna Width	24.7" (627mm)
Antenna Depth	5.2" (133mm)
RoHS	compliant
Ingress Protection	IP65
Radome Color	White
Wind Survival Rating	150 mph (241 km/h)

ANTENNA OPTIONS

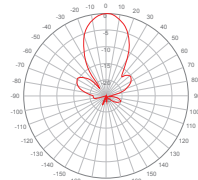
- 04119261-05631-1 EXTENT D5501i with 2 connectors
- 04119261-05631 EXTENT D5501i with 4 connectors
- 62-28-09 [Pole/Wall Mounting Bracket](#)
- 62-45-09 [Pole/Wall 1 or 2 Axis Mounting Bracket](#)

MOUNTING INFORMATION:

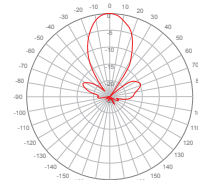
The mounting bracket allows wall and pole mounting with flexible and continuous antenna adjustment in the horizontal as well as in the vertical plane.



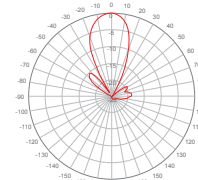
740 MHz



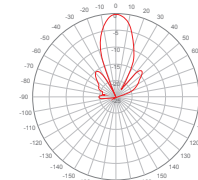
860 MHz



1800 MHz



2150 MHz



2450 MHz

